

EXTENDING THE USABLE DURATION OF THE "WINDOWS 10 ENTERPRISE EVALUATION"

by Francis Chao
fchao2@yahoo.com

TuCS COMPUTER
SON SOCIETY 1

Web location for this
presentation:

<http://aztcs.org>

Click on

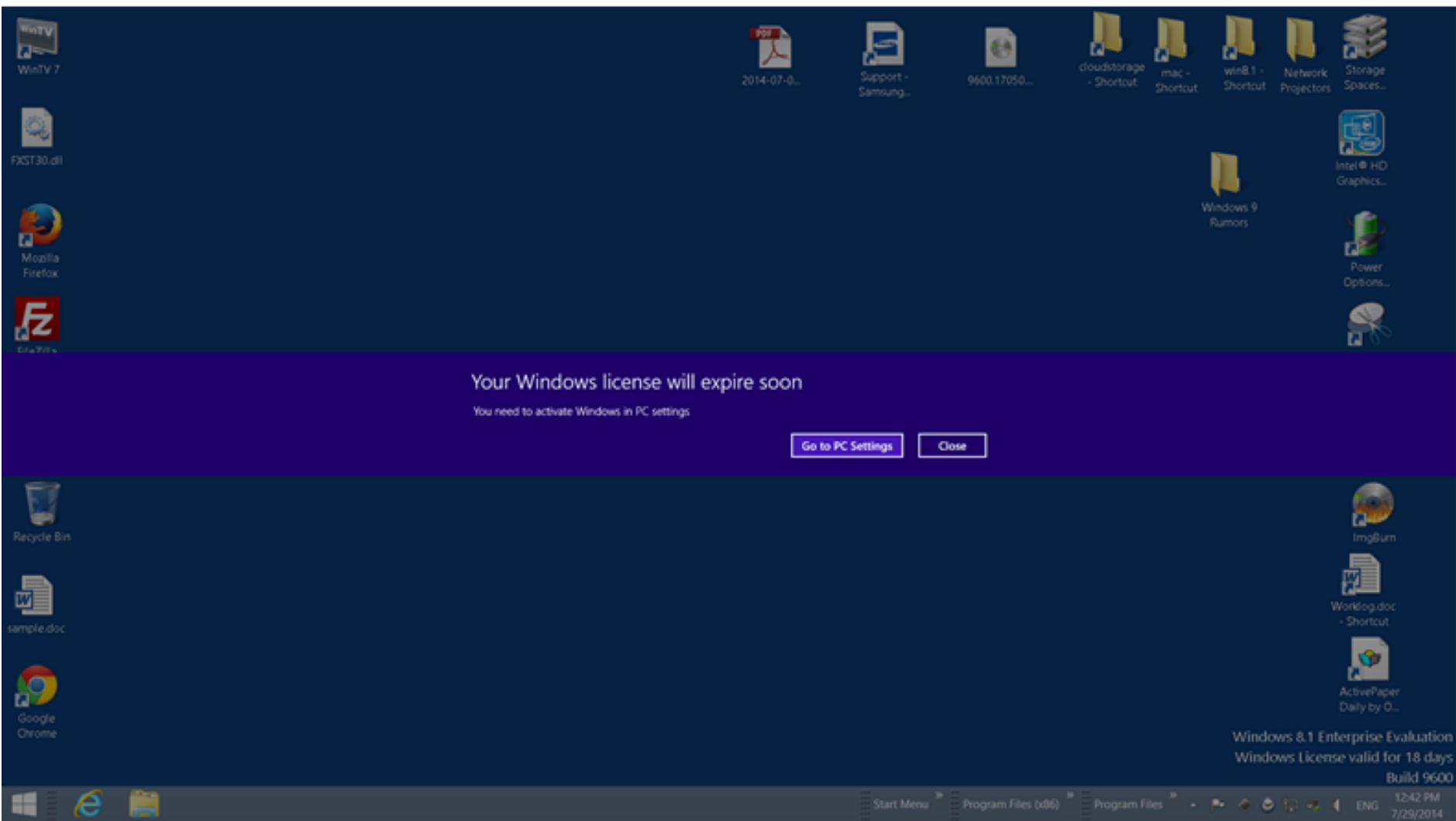
“Meeting Notes”

SUMMARY

At or near the end of the 90th day of an installation of the "Windows 10 Enterprise Evaluation", you can run an elevated command prompt command to extend it for another 90 days, for a total usable duration of 180 days!

"HOW TO" DETAILS

- 20 days before your free copy of "Windows 10 Enterprise Evaluation" expires, you will start getting daily notifications as shown:



Your Windows license will expire soon

You need to activate Windows in PC settings

[Go to PC Settings](#)

[Close](#)

Your Windows license will expire soon

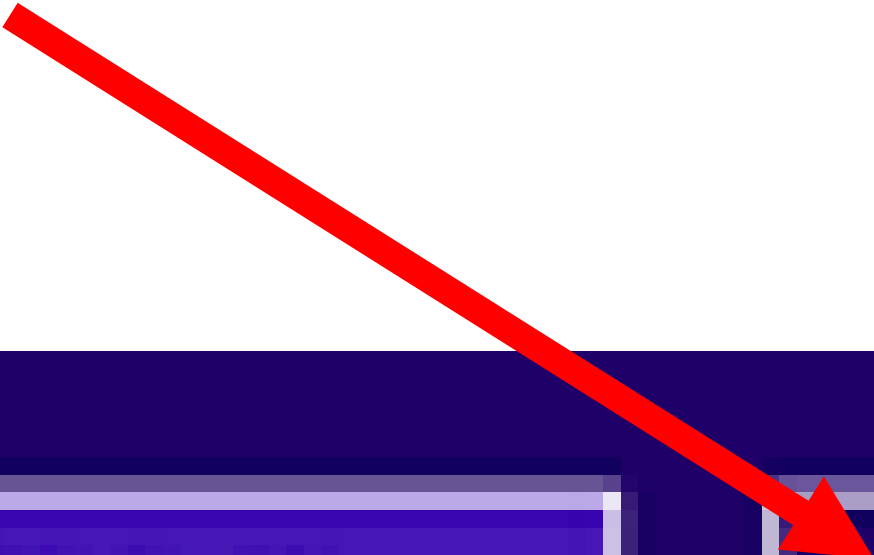
You need to activate Windows in PC settings

Go to PC Settings

Done

"HOW TO" DETAILS (continued)

- For the free "Windows 10 Enterprise Evaluation", the "Go to PC Settings" button is useless and you should just close the notification message:



Go to PC Settings

Close

"HOW TO" DETAILS (continued)

- See

<http://www.jholu.com/2012/01/02/extend-trial-of-windows-8-windows-7-or-vista/>

for step-by-step instructions on extending the 90 day trial for another 90 days on or near the 89th day.

ADDITIONAL ADVICE

- See

<http://blog.unlockforus.org/2012/08/windows-8-how-to-check-and-extend-trial.html>

for some additional command-line commands that you can run from an elevated command prompt (where you run cmd.com as an administrator):

ADDITIONAL ADVICE (continued)

See the license information

`slmgr.vbs /dli` or `slmgr.vbs -dli`

- you'll be able to see the time remaining in terms of minutes and days

For the detailed license status

`slmgr.vbs /dlv` or `slmgr.vbs -dlv`

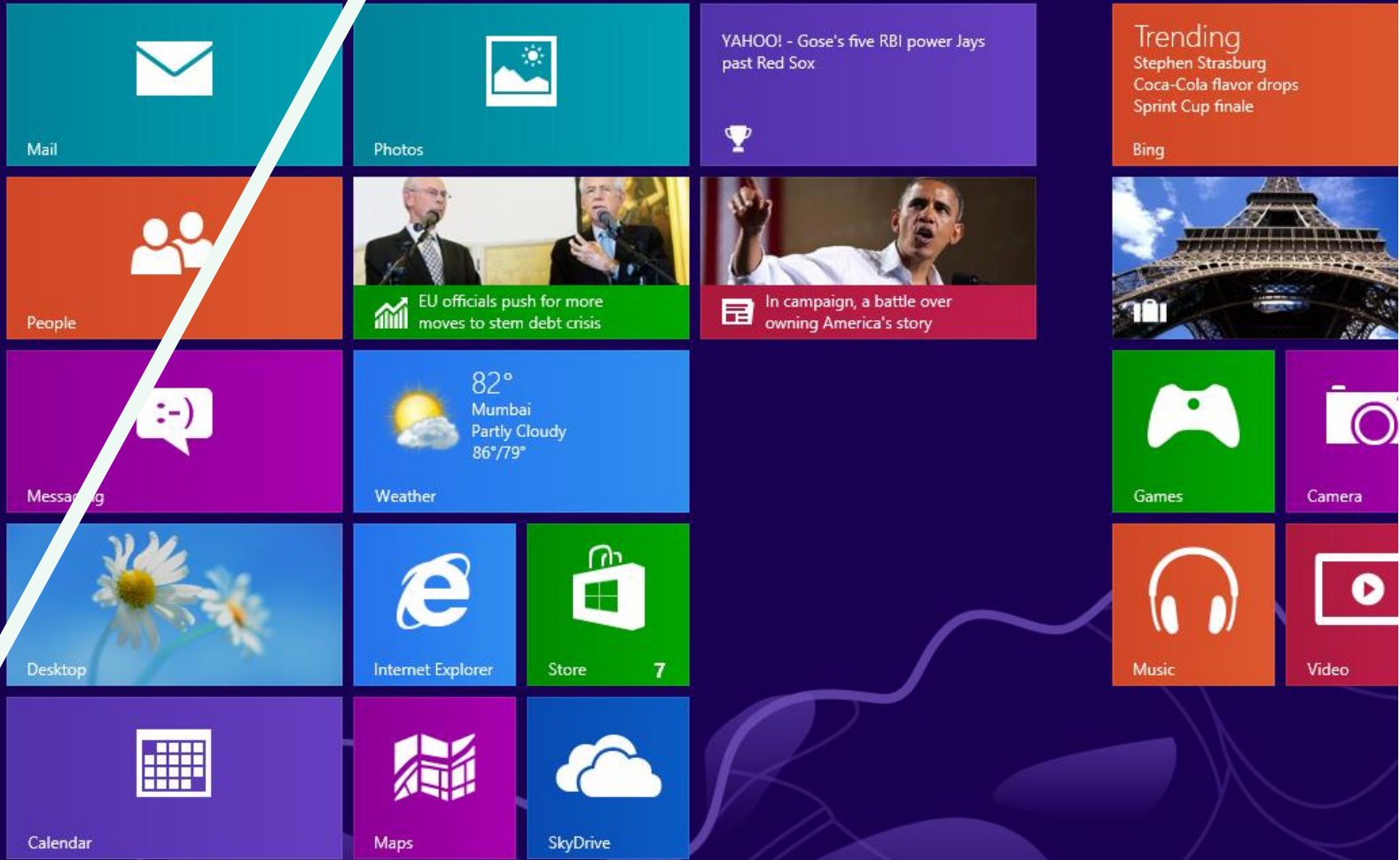
- you'll see many details regarding software licensing service including the number of times you can [extend the evaluation period](#) (Remaining Windows rearm count)

COMMAND PROMPT AS ADMINISTRATOR IN "WINDOWS 10.."

- Step 1:
Hover the mouse cursor over the lower left-hand corner of the monitor screen.

Start

testuser 



The Start screen features a grid of live tiles. The top row includes Mail, Photos, a Yahoo! news tile titled "YAHOO! - Gose's five RBI power Jays past Red Sox", and a Bing trending tile with the headline "Stephen Strasburg Coca-Cola flavor drops Sprint Cup finale". The second row contains People, a news tile about "EU officials push for more moves to stem debt crisis", a news tile about "In campaign, a battle over owning America's story", and a large image tile of the Eiffel Tower. The third row has Messaging, a weather tile for Mumbai (82° Partly Cloudy, 86°/79°), Games, and Camera. The fourth row includes Desktop, Internet Explorer, Store (with a '7' badge), Music, and Video. The bottom row consists of Calendar, Maps, and SkyDrive.



COMMAND PROMPT AS ADMINISTRATOR IN "WINDOWS 10.."

- Step 2:
Wait for a thumbnail to pop up:

Start

testus




Mail



Photos

YAHOO! - Gose's five RBI power Jays past Red Sox




Bing



People


DOW
13,306.64 ▲ +0.11% (+14.64)
9/7/2012 4:01 PM EDT



In campaign, a battle over owning America's story



Library



Messaging

69°
New York City
Partly Cloudy
77°/63°



Weather




Games



Desktop




Internet Explorer




Store 7




Music



Calendar



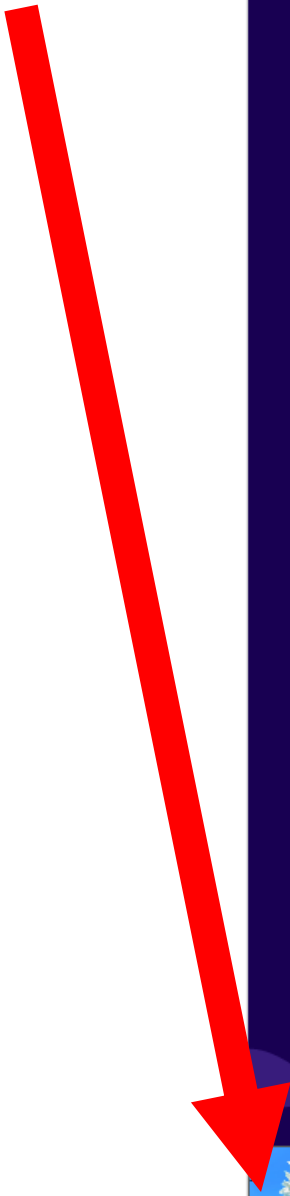
Maps



SkyDrive



Desktop



COMMAND PROMPT AS ADMINISTRATOR IN "WINDOWS 10.." (continued)

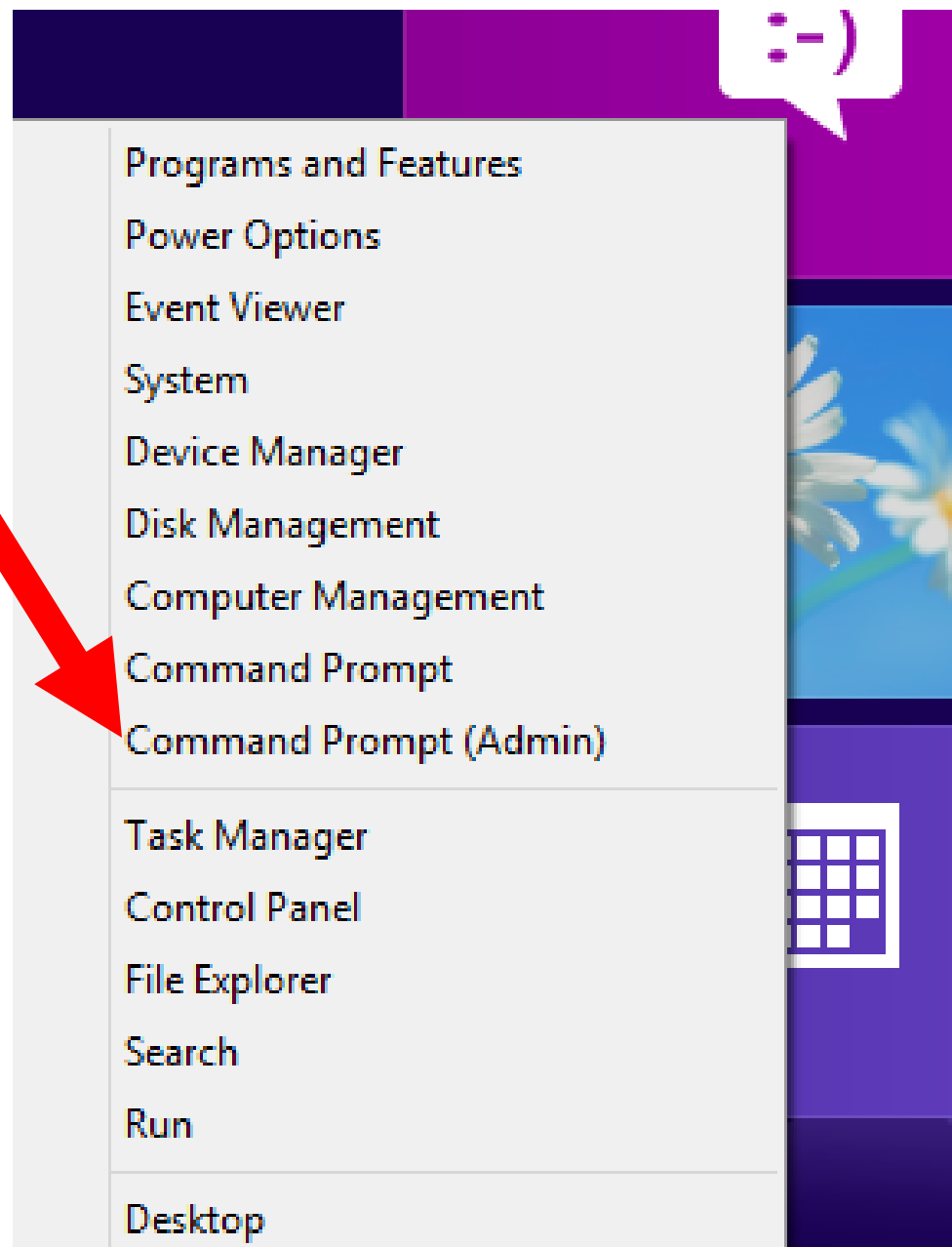
- **Step 3:**
Without moving the mouse cursor, use the **RIGHT** mouse button to click once.
- **Step 4:**
A pop-up context menu will be displayed:

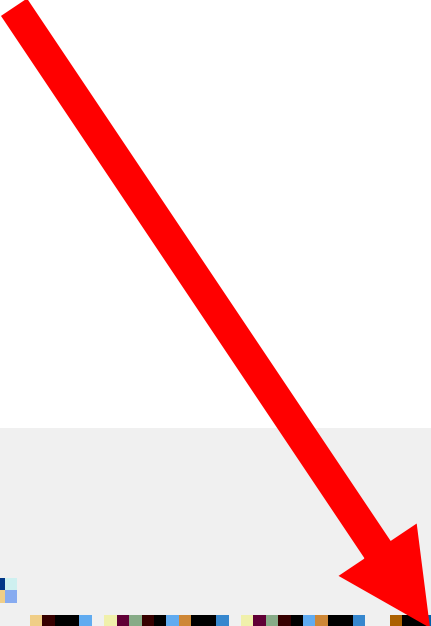
Start

The image shows the Windows 8 Start screen with a dark blue background. The word "Start" is written in white at the top left. The screen is populated with several live tiles: a teal "Mail" tile with an envelope icon; a teal "Photos" tile with a picture icon; a purple tile with a trophy icon and the text "YAHOO! - Gose's five RBI power Jays past Red Sox"; an orange "People" tile with two person icons; a green tile with a photo of two men and the text "EU officials push for more moves to stem debt crisis"; a red tile with a photo of Barack Obama and the text "In campaign, a battle over owning America's story"; a blue "Weather" tile showing "61° Paris Clear 84°/59°"; a blue "Internet Explorer" tile with the "e" logo; a green "Store" tile with a shopping bag icon and the number "7"; a purple "Maps" tile with a map icon; and a blue "SkyDrive" tile with a cloud icon. On the left side, the Charms bar is open, displaying a list of system utilities: Programs and Features, Power Options, Event Viewer, System, Device Manager, Disk Management, Computer Management, Command Prompt, Command Prompt (Admin), Task Manager, Control Panel, File Explorer, Search, Run, and Desktop.

COMMAND PROMPT AS ADMINISTRATOR IN "WINDOWS 10.." (continued)

- **Step 5:**
Move the mouse cursor to
"Command Prompt (Admin)" and
click on it.

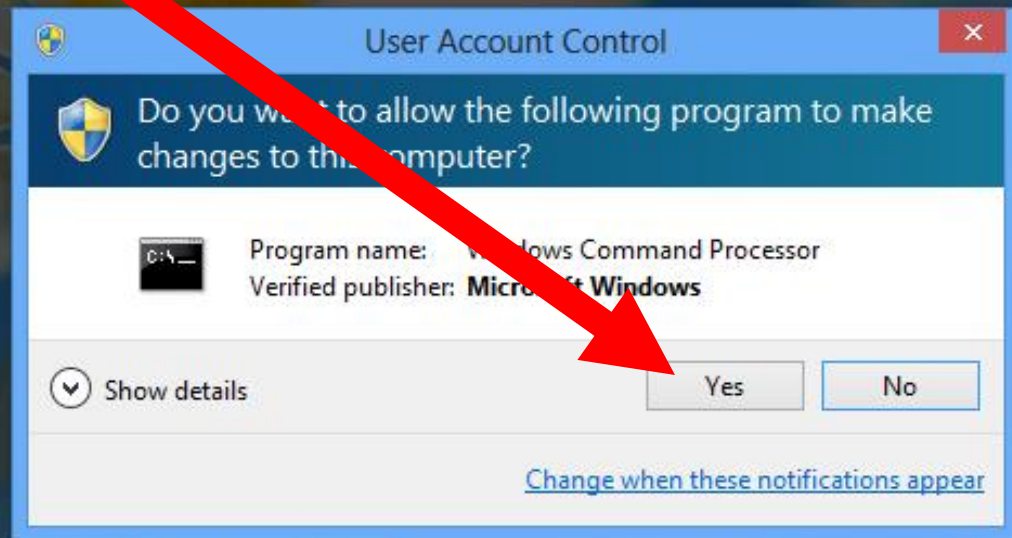


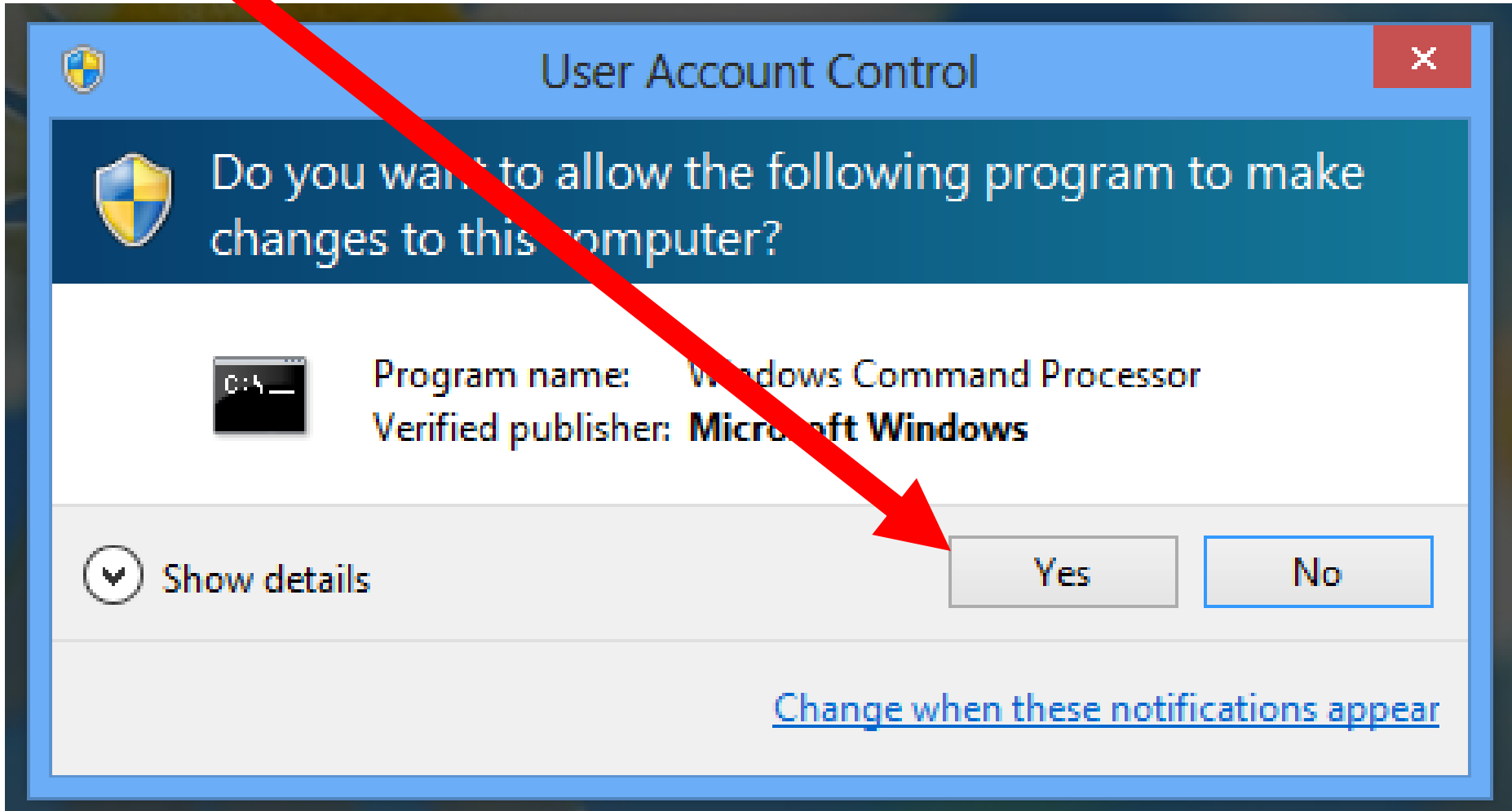


Command Prompt (Admin)

COMMAND PROMPT AS ADMINISTRATOR IN "WINDOWS 10.." (continued)

- Step 6:
If a "User Account Control" dialog box pops up, click on its "Yes" button:





COMMAND PROMPT AS ADMINISTRATOR IN "WINDOWS 10.." (continued)

- Step 7:
A "Command Prompt" window will
pop up:



Recycle Bin



SIW



SIW_Win8T...

```

Administrator: Command Prompt
Microsoft Windows [Version 6.2.9200]
(c) 2012 Microsoft Corporation. All rights reserved.
C:\Windows\system32>_

```

Windows 8 Enterprise Evaluation
 Windows License valid for 90 days
 Build 9200



System tray area containing icons for network, volume, and power, along with the system clock showing 12:06 AM on 9/9/2012.

C:\

Administrator: Command Prompt



Microsoft Windows [Version 6.2.9200]
(c) 2012 Microsoft Corporation. All rights reserved.

C:\Windows\system32>_

C:\

Administrator: Command Prom

```
Microsoft Windows [Version 6.2.9200]  
(c) 2012 Microsoft Corporation. All rights reserved.  
C:\Windows\system32>_
```

STILL MORE ADVICE

- See <http://technet.microsoft.com/en-us/evalcenter/jj552442.aspx>:

Q: Can I use Microsoft deployment technologies to deploy the Windows 8 Enterprise 90-day evaluation to multiple computers?

A: Yes, the Windows 8 Enterprise 90-day evaluation is a fully functional copy of Windows 8 Enterprise until it expires 90 days after the installation on the reference computer (the computer from which you build a system image). You can deploy the Windows 8 Enterprise 90-day evaluation using a variety of deployment technologies, including the [Microsoft Deployment Toolkit](#). You can also install it by simply running the downloaded installation application.

Q: Do I need a product key?

A: No, Windows 8 Enterprise 90-day evaluation has a product key built in, so there is no need to enter one.

Q: Do I have to activate Windows 8 Enterprise 90-day evaluation?

A: Yes, activation of the Windows 8 Enterprise 90-day evaluation is required after installation or the product will shut down every hour. The ability to activate the trial software will expire on August 15, 2013.

Q: What happens after the evaluation period expires?

A: If you wish to continue to use Windows 8 Enterprise after the evaluation period, you will be required to purchase and perform a clean installation of Windows 8, including drivers and applications. Please keep this in mind as Windows 8 Enterprise is **not available through retail channels until October 26, 2012**.

STILL MORE ADVICE

During the installation process of "Windows 10 Enterprise Evaluation", you do not need to provide a product key