

**5--TETHERING WITH  
BLUETOOTH  
FROM AN ANDROID CELL  
PHONE  
TO A "WINDOWS.." COMPUTER  
by Francis Chao  
fchao2@yahoo.com**



Web location for this  
presentation:

<http://aztcs.apcug.org>

Click on

"Meeting Notes"

# SUMMARY

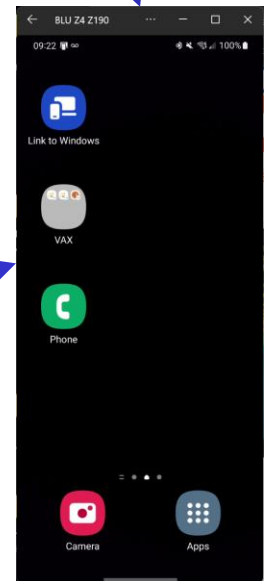
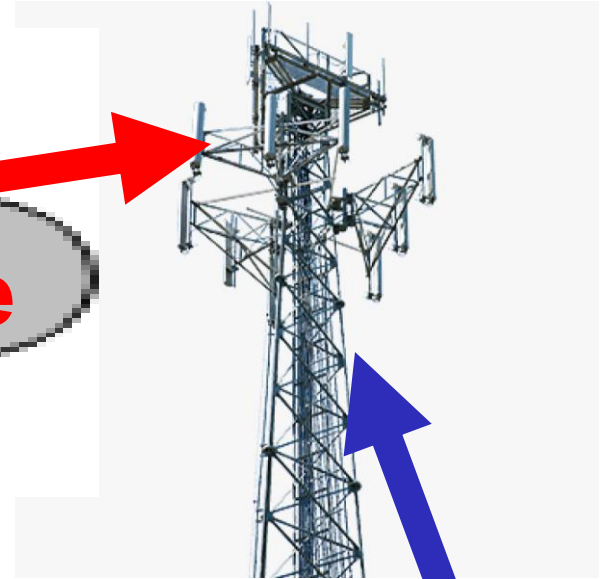
You can use your iPhone to create a Bluetooth tether/hotspot to provide an Internet connection for a "Windows.." computer.

# TOPICS

- "Access Point" Instead of "Direct Connection" !!
- Big Steps (for computer experts)
- Small Steps (for the rest of us)

**Internet Cloud  
(= "Data Plan" in cell phone  
lingo)**

**Option 3:  
Android cell phone  
provides a  
wireless Bluetooth  
"hotspot"/tether  
to the client computer, tablet,  
or another cell phone so that  
it can access the Internet**

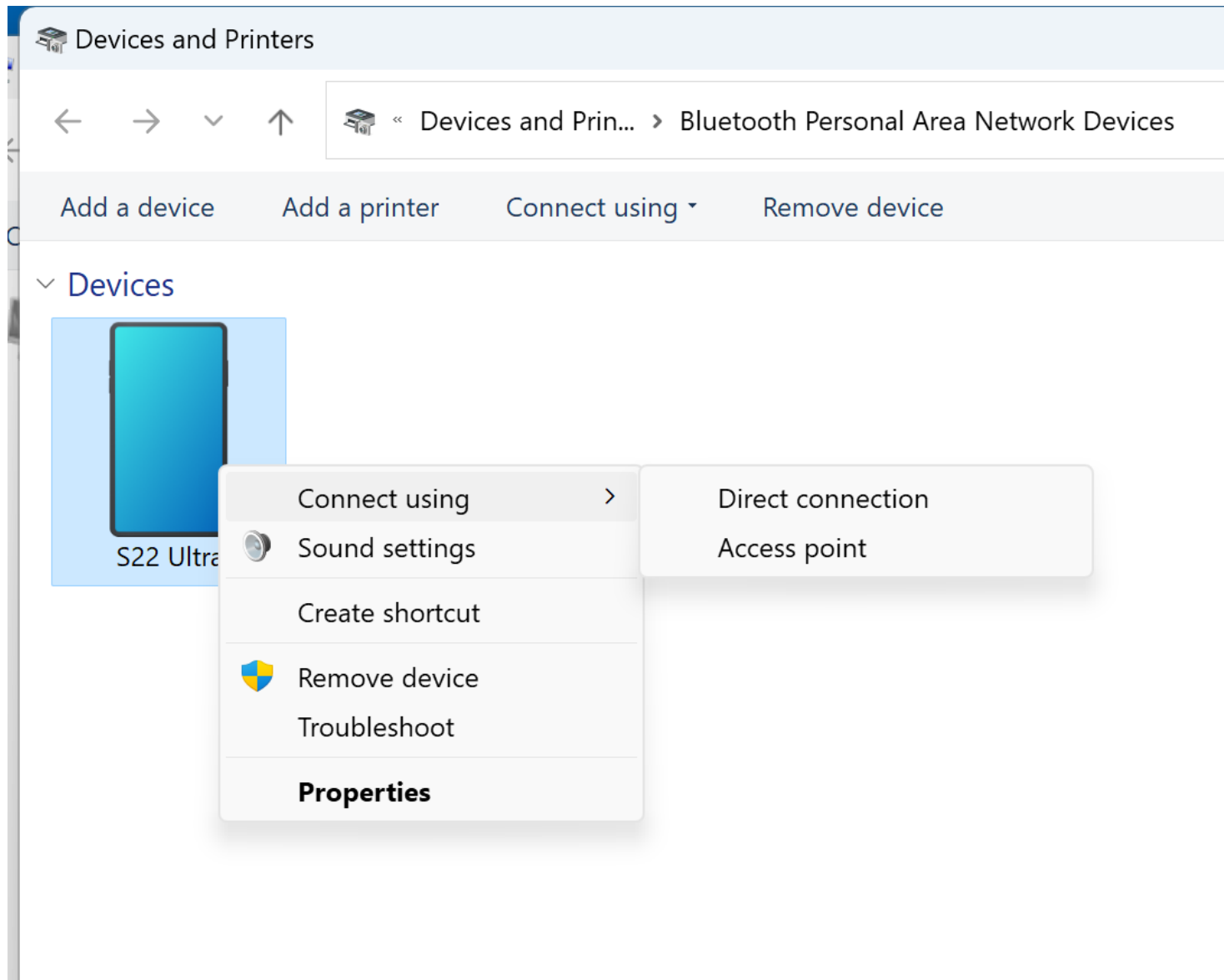


# "TETHERING" AND "HOTSPOT" FOR CELL PHONES

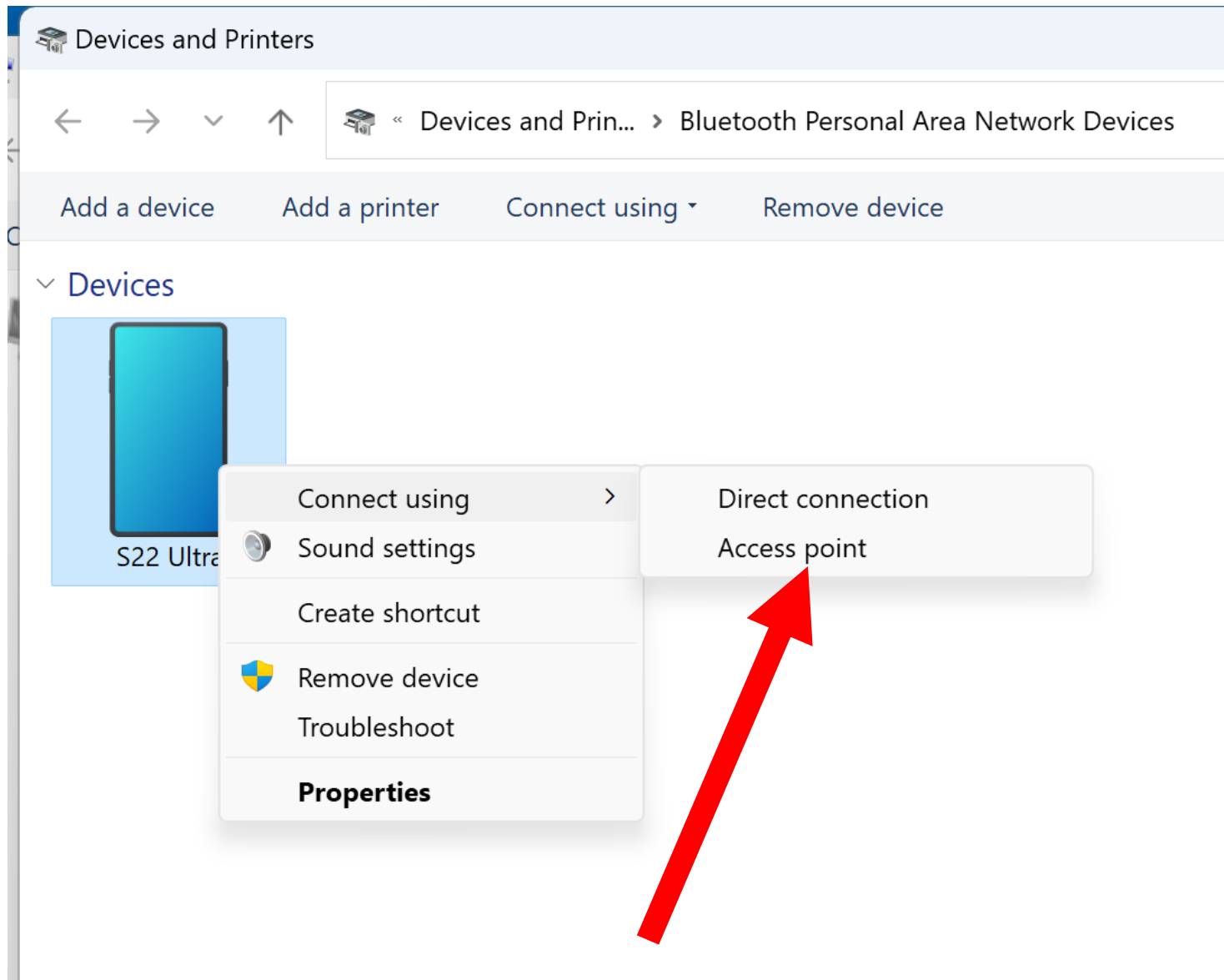
- ~~Four ways to tether or create a hotspot with a cell phone:~~
  - ~~Option 1: tethering using Wi Fi~~
  - ~~Option 2: tethering using a "cell phone to USB" cable~~
  - Option 3: tethering using Bluetooth**
  - ~~Option 4: tethering using an add on wired Ethernet adapter~~

# "ACCESS POINT" INSTEAD OF "DIRECT CONNECTION"

- The key to making a successful Bluetooth tether from a client device to a cell phone is to make an "Access Point" instead of a "Direct Connection", after doing a Bluetooth "pairing" between a cell phone and a client device:







# OPTION 3 BIG STEPS

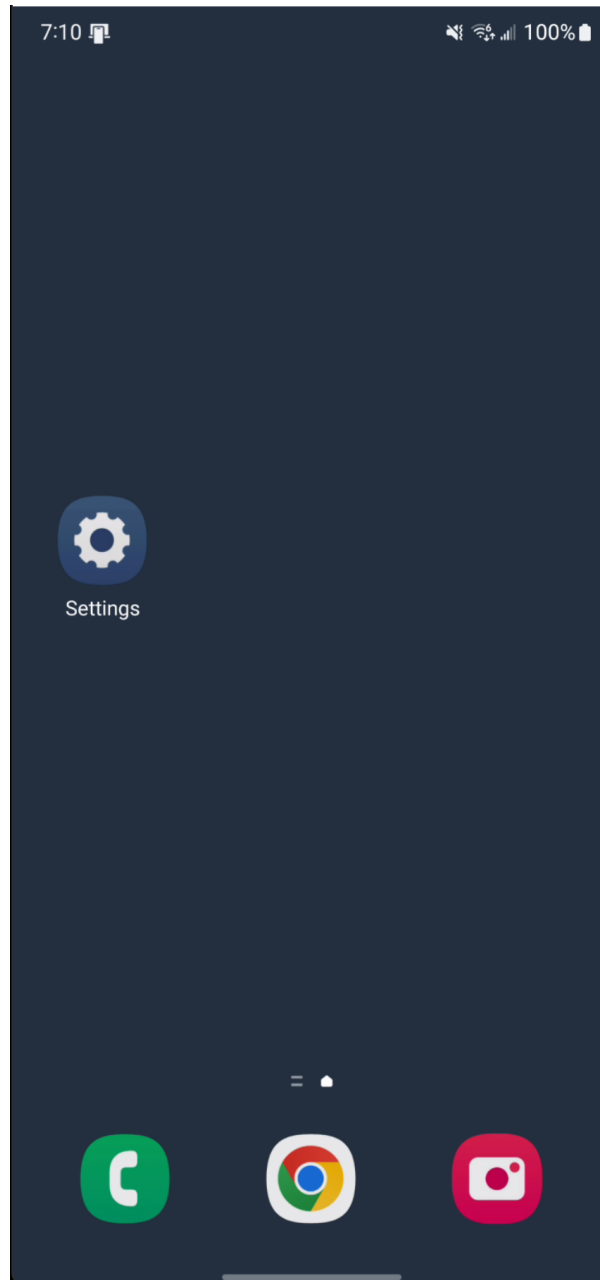
("Option 3:" = tethering using Bluetooth)

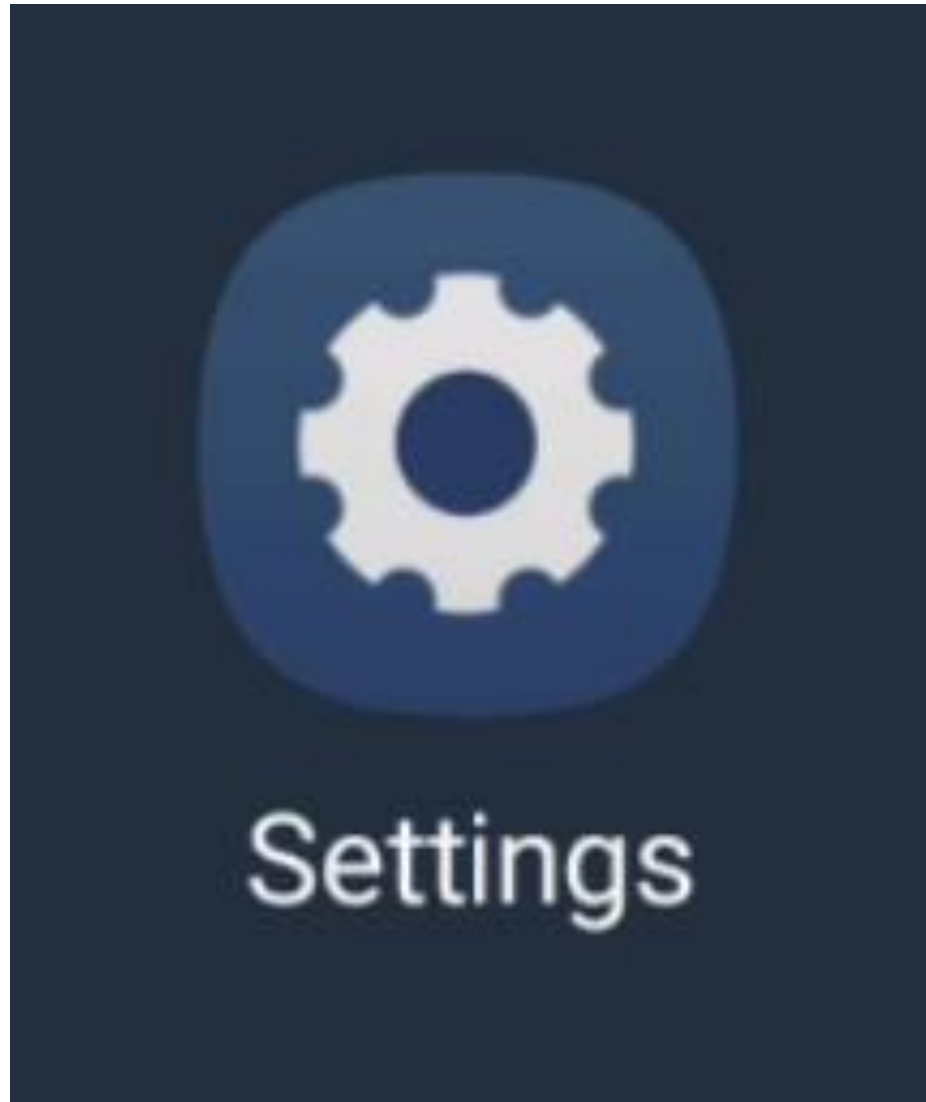
- BIG STEP 100:  
Do a Bluetooth "Pairing" between the Android cell phone and the client device
- BIG STEP 200:  
Activate "Bluetooth Tethering" in the "Settings" app of the Android cell phone
- BIG STEP 300:  
From the Bluetooth icon in "Network Connections" of Windows..., connect to the Android phone as an "Access Point"

BIG STEP 100 (Activate Bluetooth pairing for the Android cell phone and the client device)

SMALL STEP 101:

Locate the "Settings" icon in the Android cell phone:





**BIG STEP 100 (Activate Bluetooth pairing for the Android cell phone and the client device)**  
(continued)

**SMALL STEP 102:**

Tap on the "Settings" icon of the Android cell phone:

## Settings



FRANCIS CHAO

Samsung account • fch\*\*\*@yahoo.com



## Connections

Wi-Fi • Bluetooth • Airplane mode



## Connected devices

Quick Share • Android Auto



## Modes and Routines

Modes • Routines



## Sounds and vibration

Sound mode • Ringtone



## Notifications

Status bar • Do not disturb



## Display

Brightness • Eye comfort shield • Navigation bar



## Wallpaper and style

Wallpapers • Color palette



## Themes

Themes • Wallpapers • Icons

BIG STEP 100 (Activate Bluetooth pairing for the Android cell phone and the client device)  
(continued)

SMALL STEP 103:

Tap on "Connections" in the screen of the "Settings" app:



## Settings



FRANCIS CHAO

Samsung account • fch\*\*\*@yahoo.com



## Connections

Wi-Fi • Bluetooth • Airplane mode



## Connected devices

Quick Share • Android Auto



## Modes and Routines

Modes • Routines



## Sounds and vibration

Sound mode • Ringtone



## Notifications

Status bar • Do not disturb



## Display

Brightness • Eye comfort shield • Navigation bar



## Wallpaper and style

Wallpapers • Color palette



## Themes

Themes • Wallpapers • Icons

## < Connections



Wi-Fi

Verizon\_XC7J3W



Wi-Fi Calling



Bluetooth



NFC and contactless payments



Ultra-wideband (UWB)

Identify the precise location of nearby devices.



Airplane mode



Mobile networks

Data usage

SIM manager

Mobile Hotspot and Tethering

More connection settings

# BIG STEP 100 (Activate Bluetooth pairing for the Android cell phone and the client device) (continued)

## SMALL STEP 104:

If "Bluetooth" is "off", tap on it's on-off selector to enable it.

If "Bluetooth" is not enabled, tap on it's on-off selector twice to disable and then re-enable it.

# Connections



Wi-Fi

Verizon\_XC7J3W



Wi-Fi Calling



Bluetooth



NFC and contactless payments



Ultra-wideband (UWB)

Identify the precise location of nearby devices.



Airplane mode



Mobile networks

Data usage

SIM manager

Mobile Hotspot and Tethering

More connection settings

## &lt; Connections



Wi-Fi

Verizon\_XC7J3W



Wi-Fi Calling



Bluetooth



NFC and contactless payments



Ultra-wideband (UWB)

Identify the precise location of nearby devices.



Airplane mode



Mobile networks

Data usage

SIM manager

Mobile Hotspot and Tethering

More connection settings

Bluetooth



BIG STEP 100 (Activate Bluetooth pairing for the Android cell phone and the client device)  
(continued)

SMALL STEP 105:

The "on-off" toggle will now be in the "on" position.

Bluetooth





**BIG STEP 100 (Activate Bluetooth pairing for the Android cell phone and the client device)**  
(continued)

**SMALL STEP 106:**

**Tap on the word "Bluetooth":**

## < Connections



Wi-Fi

Verizon\_XC7J3W



Wi-Fi Calling



Bluetooth



NFC and contactless payments



Ultra-wideband (UWB)

Identify the precise location of nearby devices.



Airplane mode



Mobile networks

Data usage

SIM manager

Mobile Hotspot and Tethering

More connection settings

BIG STEP 100 (Activate Bluetooth pairing for the Android cell phone and the client device)  
(continued)

SMALL STEP 107:

You will now see two lists:

a list of "Paired devices"

and

a list of "Available" devices:

## &lt; Bluetooth

Scan

On



Make sure the device you want to connect to is in pairing mode. Your phone (S22 Ultra) is currently visible to nearby devices.

## Paired devices



WIN-B3VLUDA94Q0



CP4

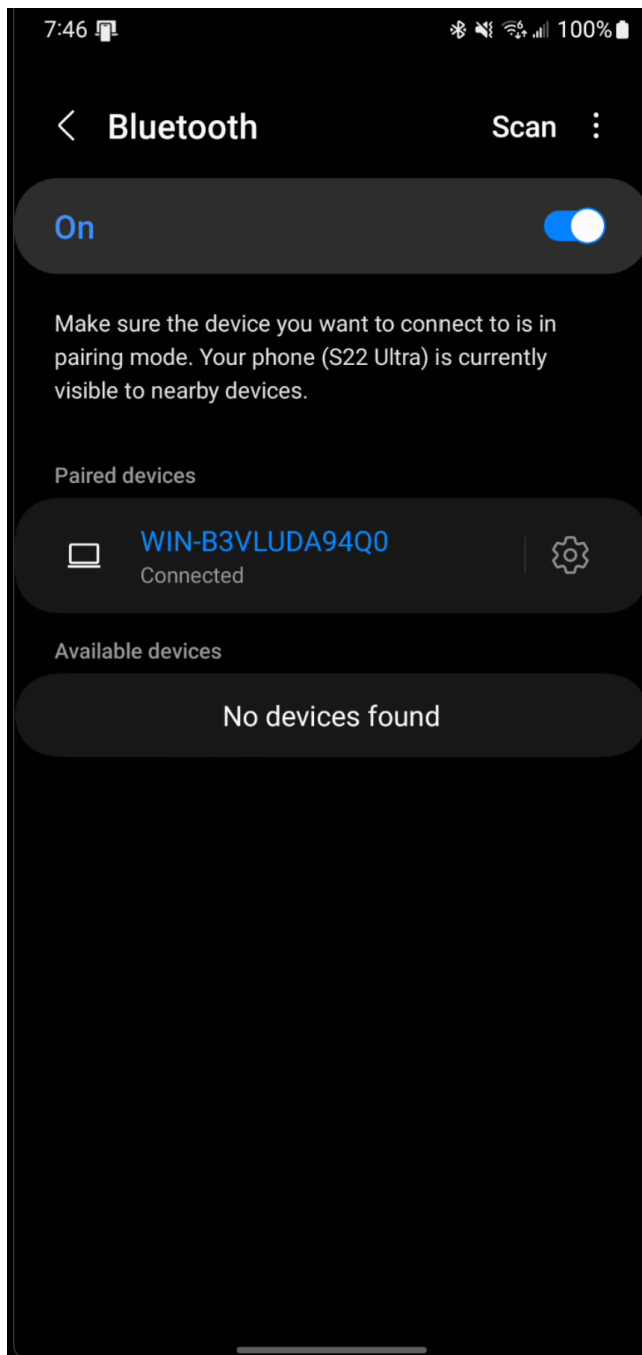


WIN-B3VLUDA94Q0



## Available devices

No devices found

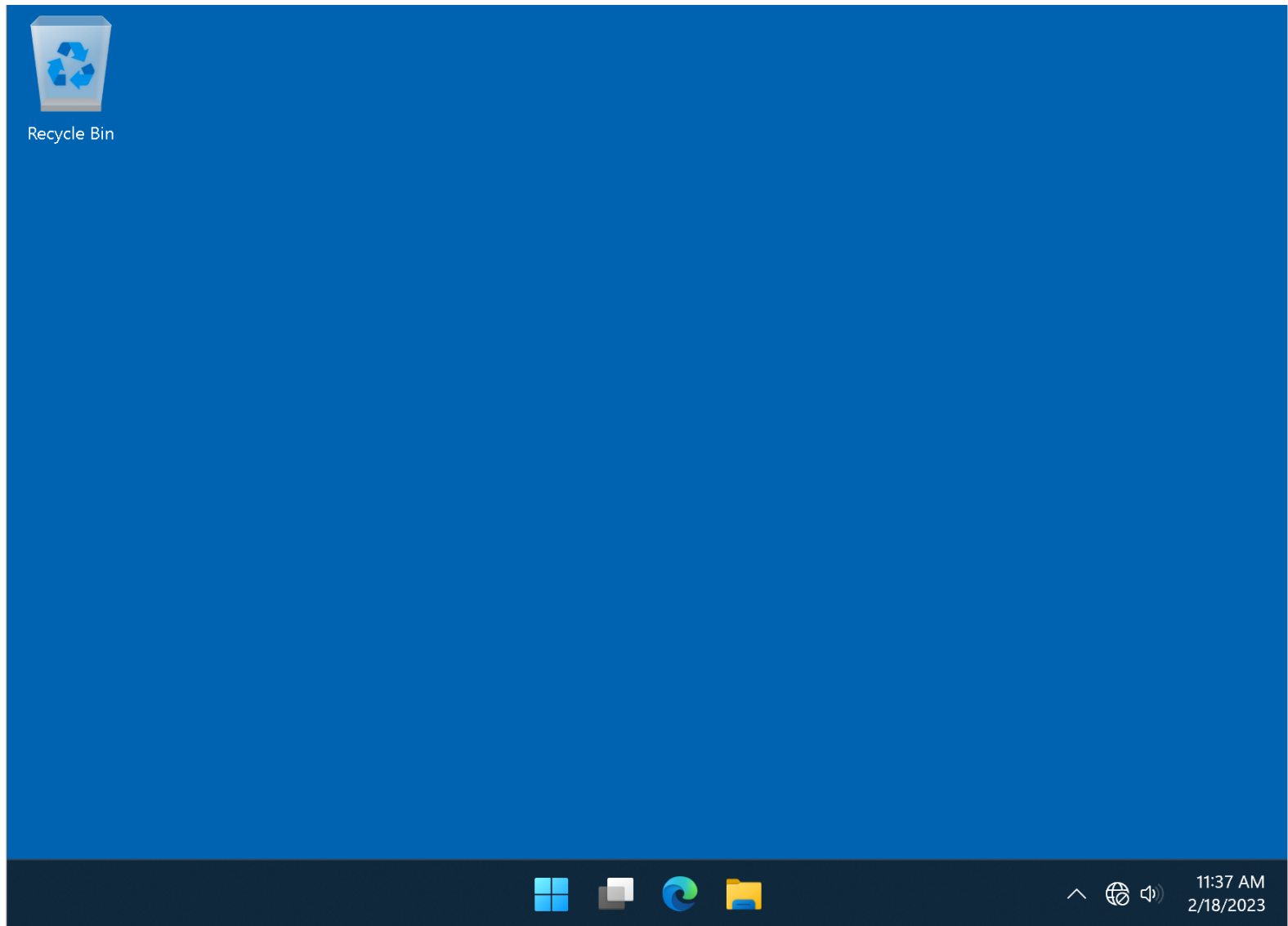


# BIG STEP 100 (Activate Bluetooth pairing for the Android cell phone and the client device) (continued)

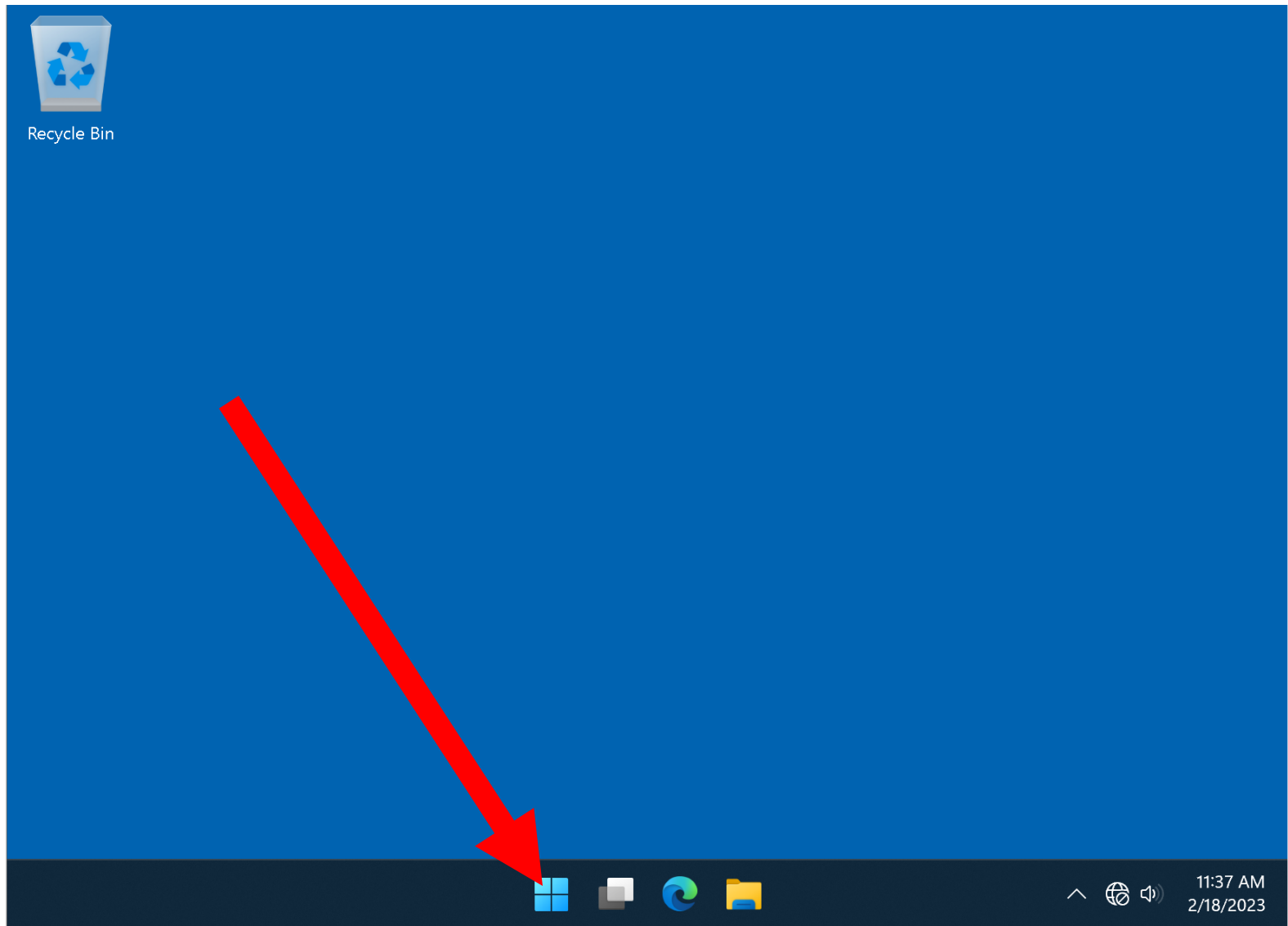
- **SMALL STEP 106:**  
From the client computer, tablet, or cell phone, go to either "Network Connections" or "Settings"

# BIG STEP 100 (Activate Bluetooth pairing for the Android cell phone and the client device) (continued)

- **SMALL STEP 107:**  
From a Windows.. computer, use the left mouse button to click on the "Start" button:

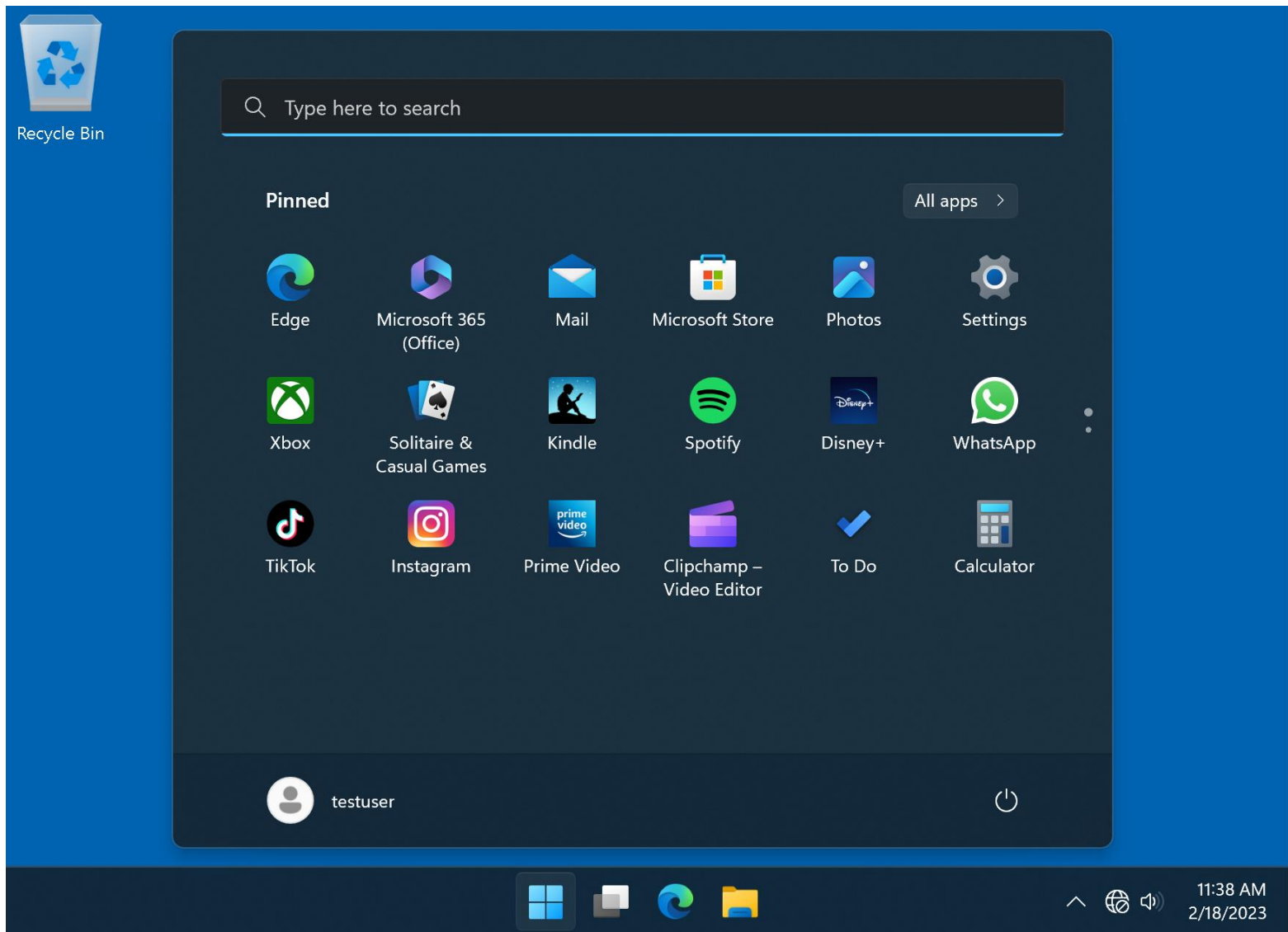


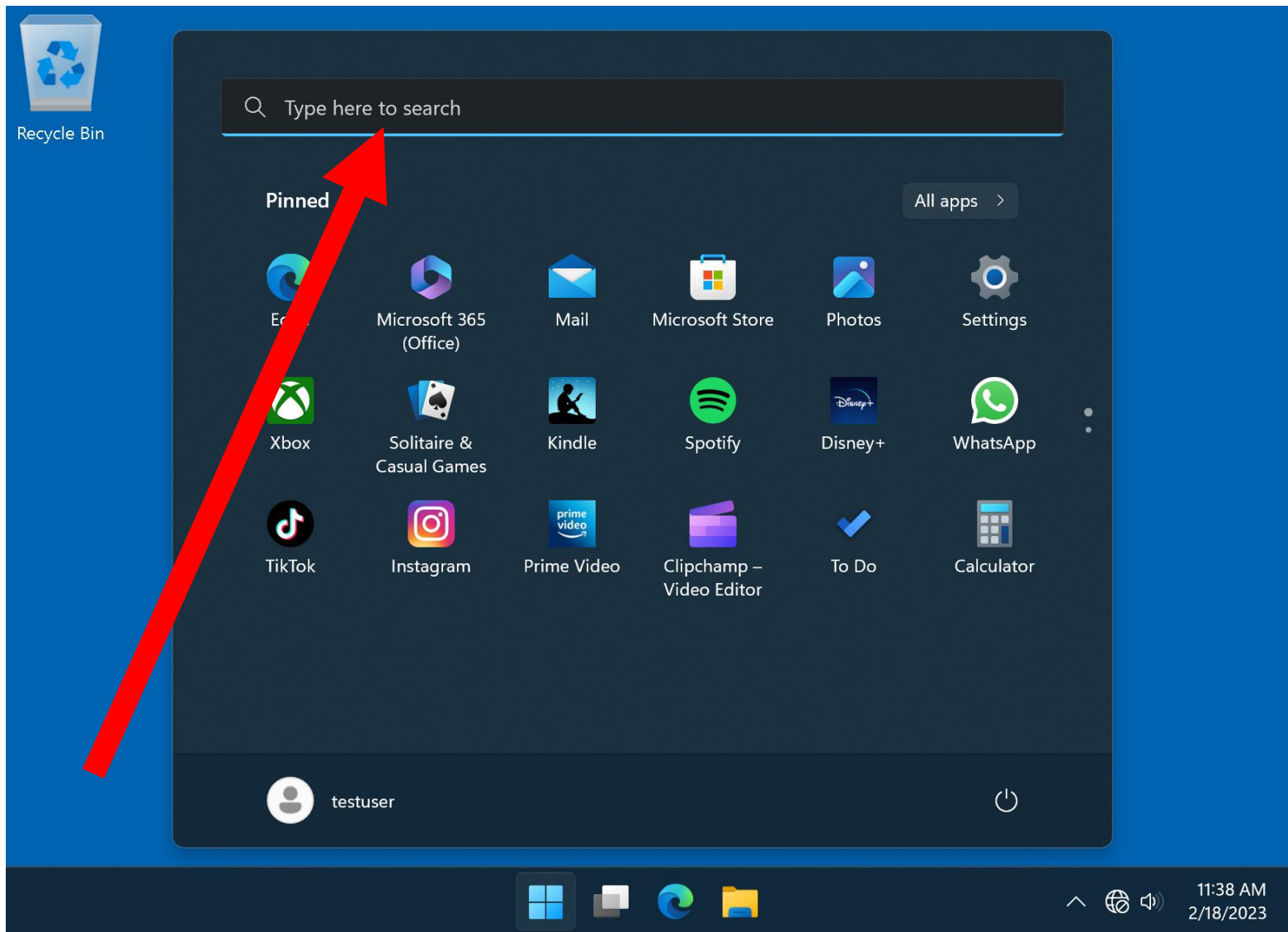




# BIG STEP 100 (Activate Bluetooth pairing for the Android cell phone and the client device) (continued)

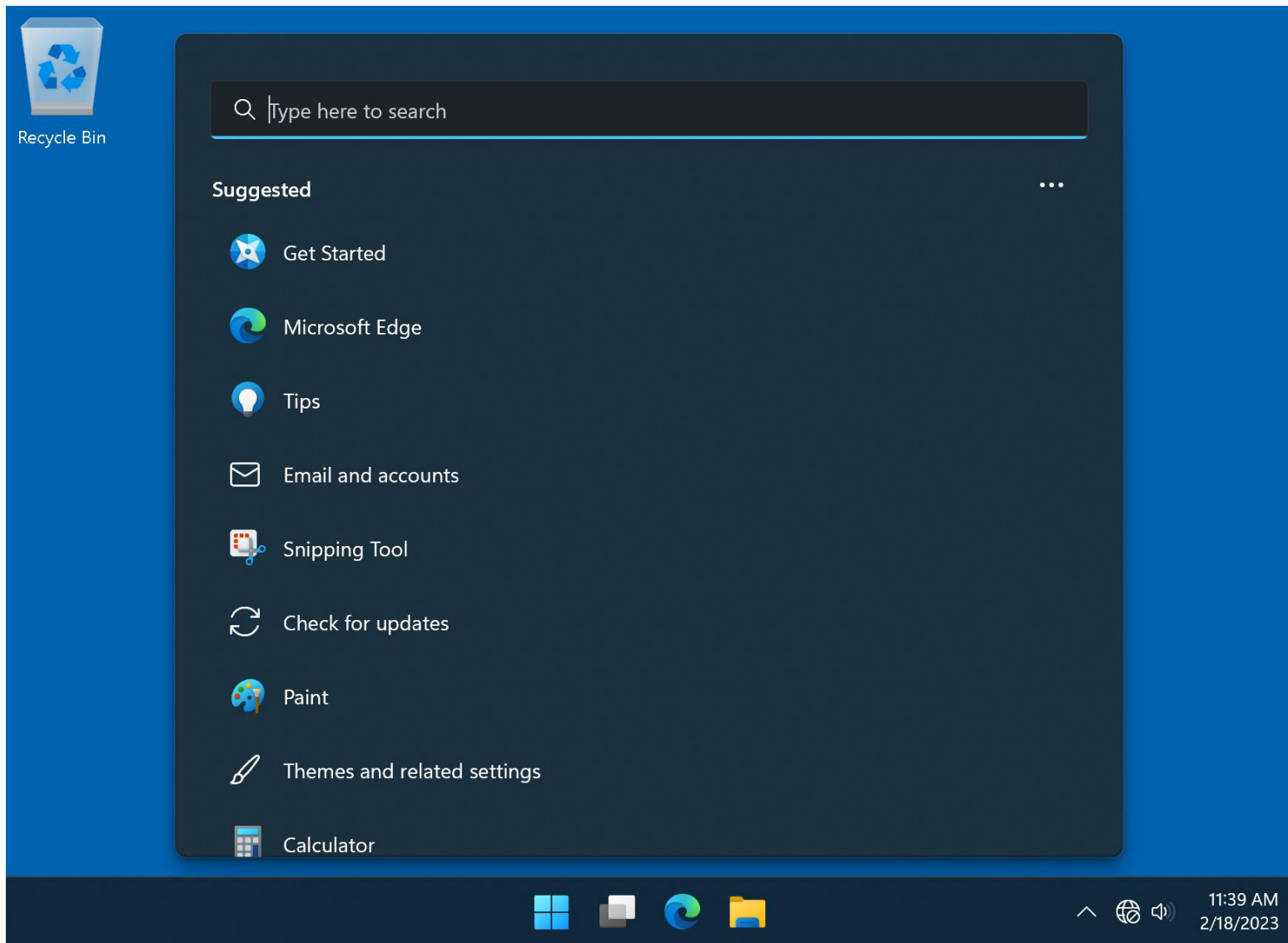
- **SMALL STEP 108:**  
Click on the "Search" field:





# BIG STEP 100 (Activate Bluetooth pairing for the Android cell phone and the client device) (continued)

- **SMALL STEP 109:**  
A pop-up window will be displayed:



# BIG STEP 100 (Activate Bluetooth pairing for the Android cell phone and the client device) (continued)

- **SMALL STEP 110:**  
Type in  
Network Connections  
into the search box of the pop-up  
window:



Recycle Bin

Q network connections



### Best match



View **network connections**

Control panel



11:42 AM  
2/18/2023

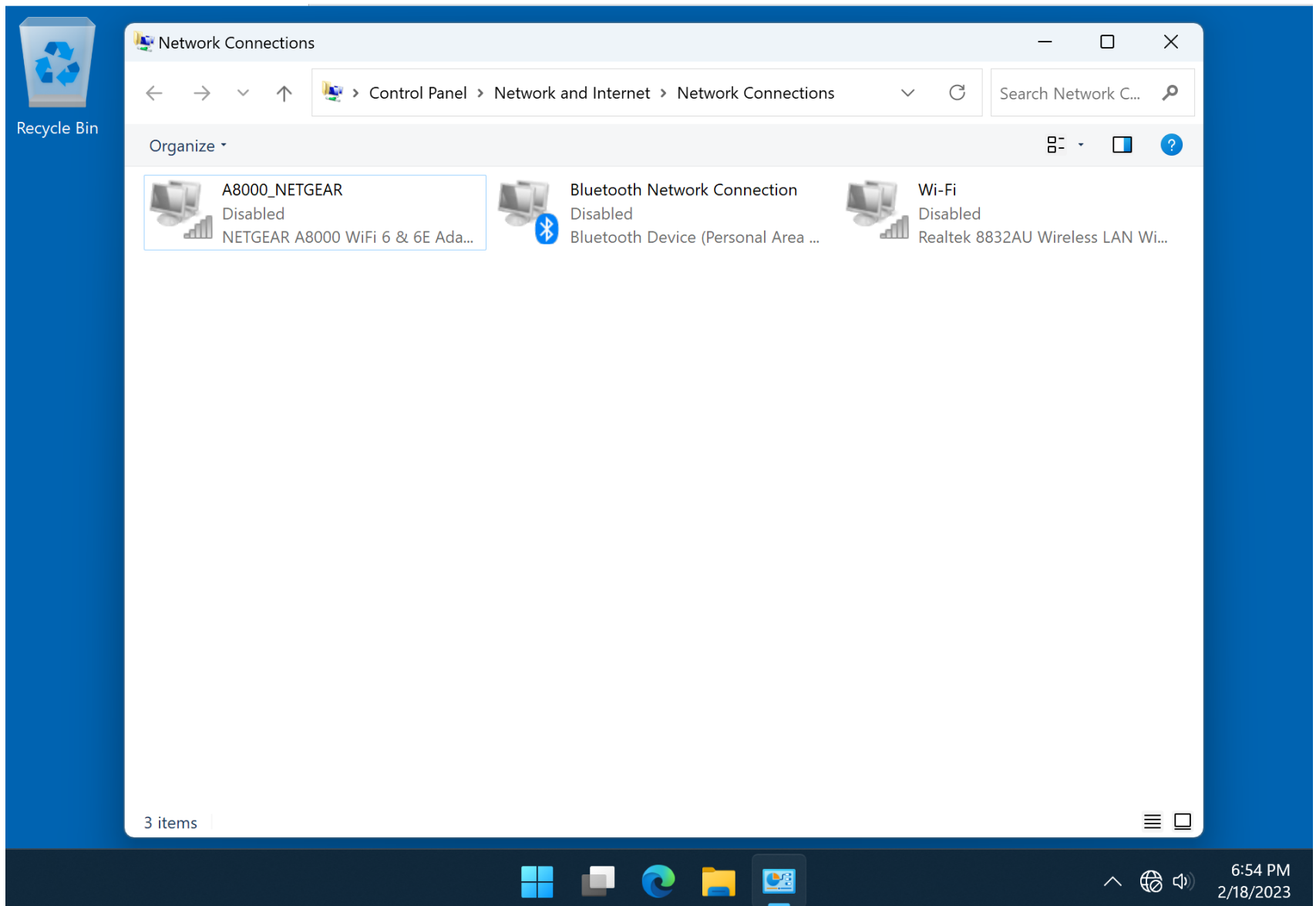


# BIG STEP 100 (Activate Bluetooth pairing for the Android cell phone and the client device) (continued)

- **SMALL STEP 111:**  
Press the Enter key of the computer's keyboard.

# BIG STEP 100 (Activate Bluetooth pairing for the Android cell phone and the client device) (continued)

- **SMALL STEP 112:**  
A "Network Connections" window will be displayed.



## BIG STEP 100 (Activate Bluetooth pairing for the iPhone and the client device) (continued)

- SMALL STEP 107 (continued):  
In a Windows.. computer, if the Bluetooth icon in "Network Connections" is "disabled", use the right mouse button to click on it; then a pop-up menu will be displayed; then click on "Enable".

# BIG STEP 100 (Activate Bluetooth pairing for the Android cell phone and the client device) (continued)

- **SMALL STEP 108:**  
If the "Bluetooth" icon is "Not connected", use the right mouse button to click on it; then use the left mouse button to click on "View Bluetooth Network Devices"

# BIG STEP 100 (Activate Bluetooth pairing for the Android cell phone and the client device) (continued)

- **BIG STEP 110:**  
Use the left mouse button to click on either "View Bluetooth Network Devices" or "Show Bluetooth Devices"

Devices

Disconnect this connection

Disable this network device



Bluetooth Network Connection

Connecte  
Bluetooth



Wi-Fi

a...

J Wir

Disconnect

View Bluetooth Network Devices



Disable

**Status**

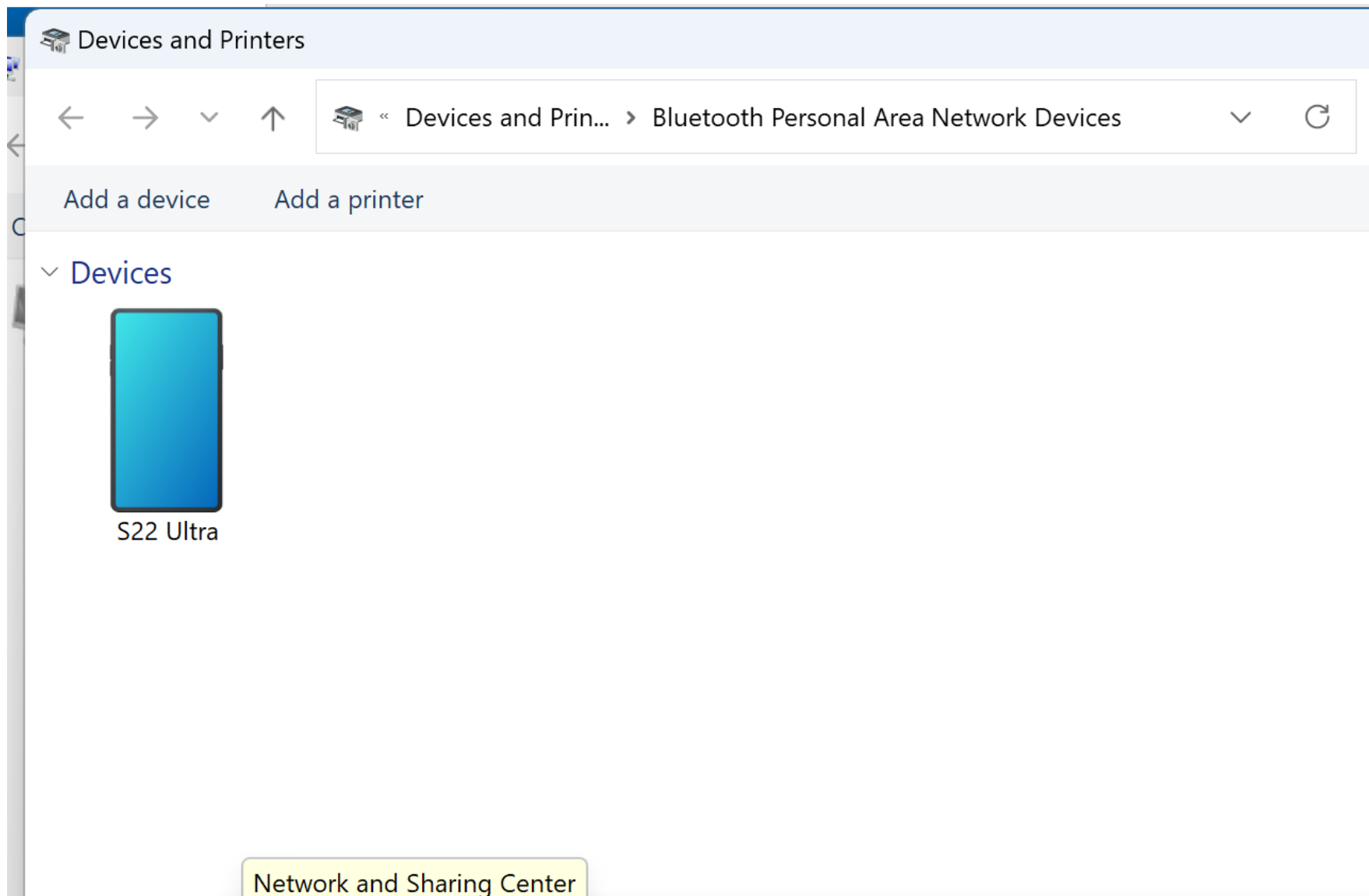
Create Shortcut



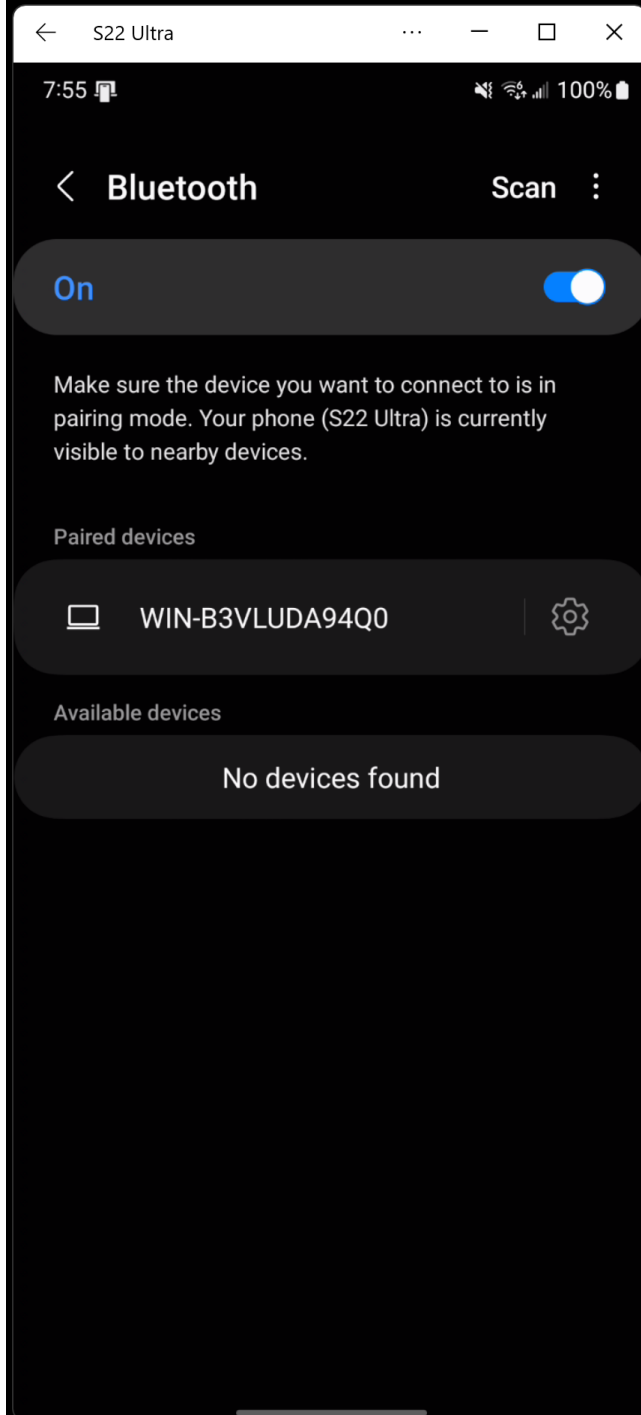
Rename



Properties

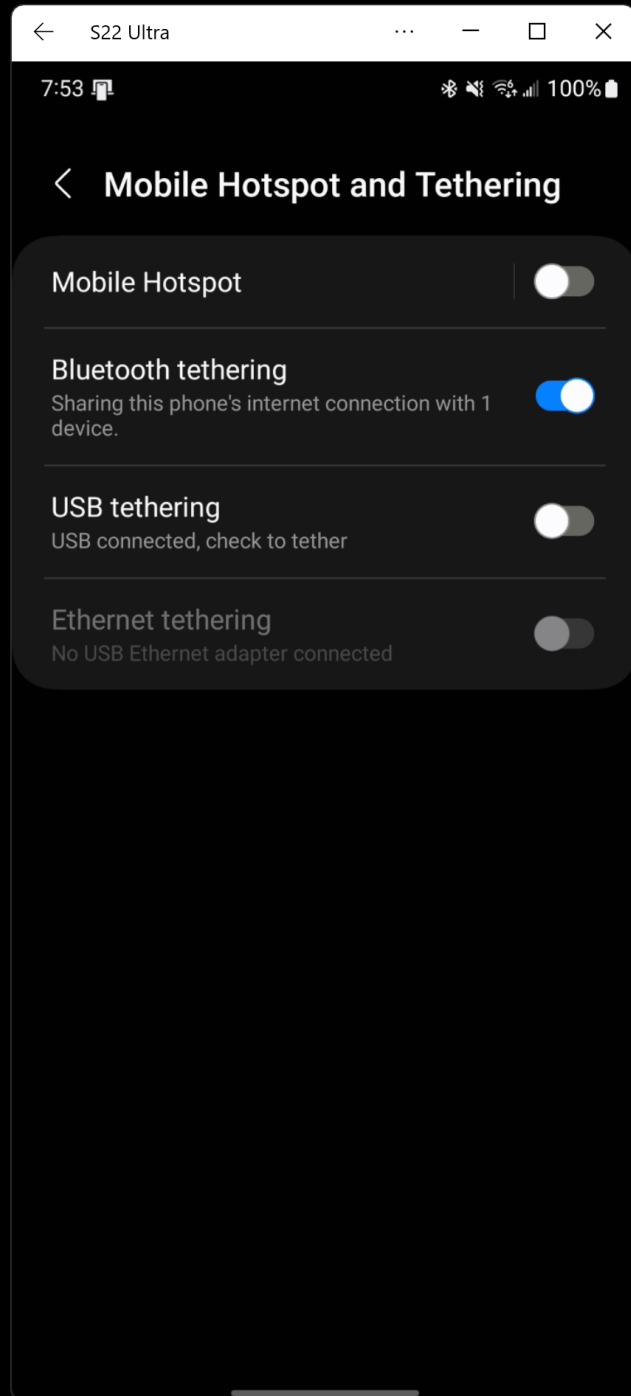






BIG STEP 200 (In the Android cell phone,  
activate "Bluetooth Tethering")

- SMALL STEP 201:  
Go to "Settings" in the Android cell  
phone
- SMALL STEP 202:  
Tap on "Connections"
- SMALL STEP 203:  
Enable "Bluetooth Tethering" if it is  
not already enabled:

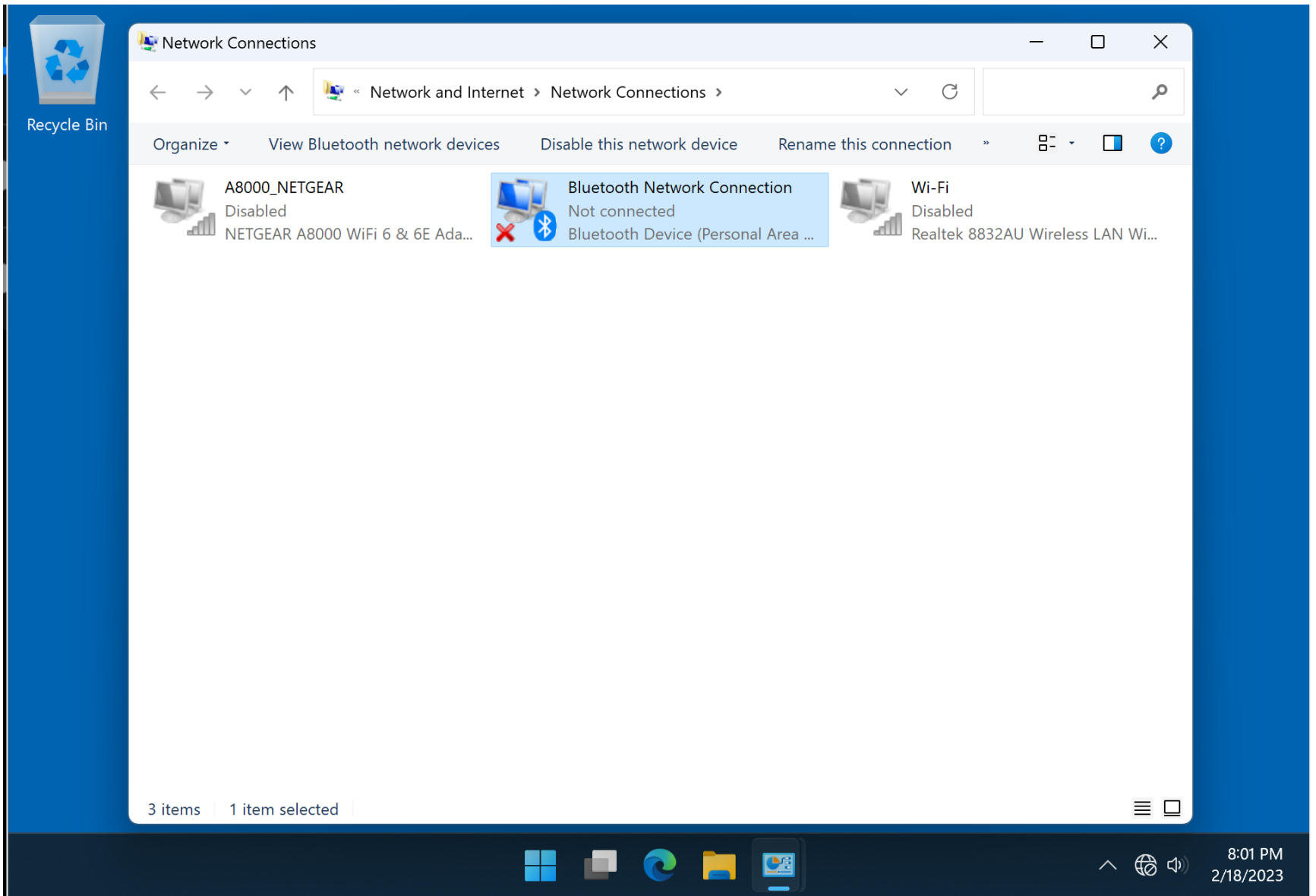


BIG STEP 300 (In "Network Connections" in Windows.., connect the Bluetooth adapter to the Android cell phone as an "Access point"

- SMALL STEP 301:  
In the Windows.. computer, go to "Network Connections"

BIG STEP 300 (In "Network Connections" in Windows., connect the Bluetooth adapter to the Android cell phone as an "Access point"

- SMALL STEP 202:  
Open the "Bluetooth Network Connection" using a double-click or a right-click



devices

Disable this network device

Rename this connection

»



Bluetooth Network Connection

Not connected

Bluetooth Network Connection



Wi-Fi

Disabled

Wi-Fi Network Connection

### View Bluetooth Network Devices



Disable

Status

Create Shortcut



Rename



Properties

BIG STEP 300 (In "Network Connections" in Windows., connect the Bluetooth adapter to the Android cell phone as an "Access point"

- SMALL STEP 203:  
Connect to the cell phone as an  
"Access Point"



