

2--TETHERING WITH A Wi-Fi "HOTSPOT" EMANATING FROM AN iPHONE TO A "WINDOWS.." COMPUTER

by Francis Chao

fchao2@yahoo.com



Web location for this
presentation:

<http://aztcs.apcug.org>

Click on

"Meeting Notes"

SUMMARY

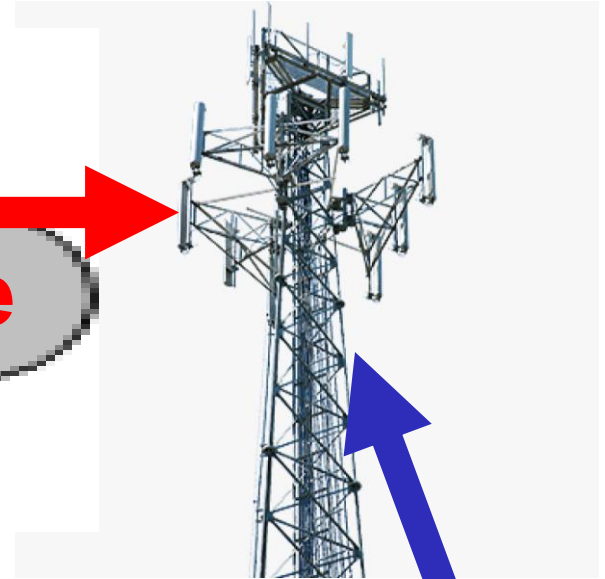
You can use your iPhone to create a Wi-Fi hotspot to provide Internet access for a " Windows.." computer.

TOPICS

- Advantage of Using A Wi-Fi hotspot from an iPhone
- Additional Advice
- Big Steps (for computer experts)
- Small Steps (for the rest of us)

**Internet Cloud
(= "Data Plan" in cell phone
lingo)**

**Option 3:
"iPhone" provides a
wireless Wi-Fi "hotspot"
so that the client
computer, tablet, or
another cell phone so
that it can access the
Internet**



"TETHERING" AND "HOTSPOT" FOR CELL PHONES

- ~~Four ways to tether or create a hotspot with a cell phone:~~

Option 1: tethering using Wi-Fi

~~Option 2: tethering using a~~
~~"cell phone to USB" cable~~

~~Option 3: tethering using Bluetooth~~

~~Option 4: tethering using an add on~~
~~wired Ethernet adapter~~

ADVANTAGE OF USING A HOTSPOT FROM AN iPHONE

- Of the four configurations for tethering from a cell phone, only **OPTION 1: tethering using Wi-Fi** lets you connect more than one device to the target cell phone at any given point in time.

ADDITIONAL ADVICE

- Wi-Fi tethering fails if you connect the Lightning port of the iPhone to the USB port of a computer but Wi-Fi tethering does not fail if you connect the Lightning port of the iPhone to a USB power charger or any "USB A" port.

ADDITIONAL ADVICE (continued)

- Wi-Fi tethering fails if you disable the "Wi-Fi" option in "Settings" in the "iPhone" so make sure that the "Wi-Fi" setting in the "iPhone" is enabled.

However, while it needs to be enabled, you cannot connect the "iPhone" to any active "Wireless Access Point" or Wi-Fi tethering will also fail.

OPTION 1 BIG STEPS

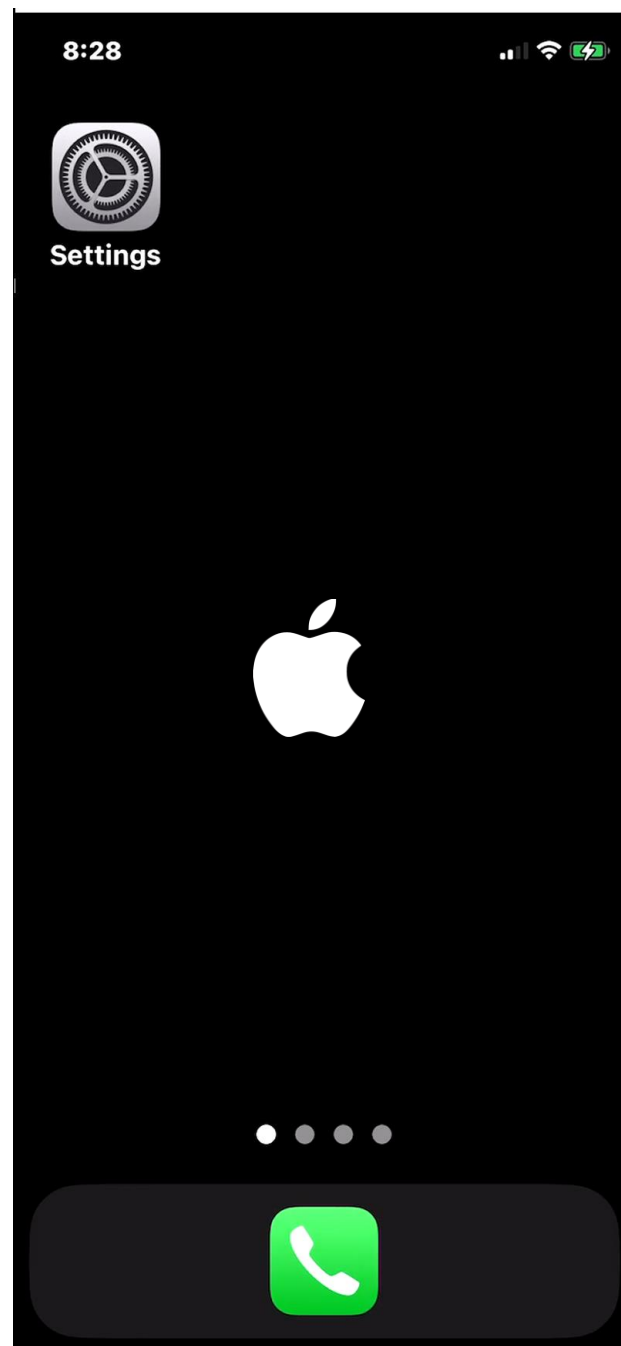
("Option 1:" = tethering using Wi-Fi)

- **BIG STEP 100:**
Set up Wi-Fi "Hotspot" emanating from the the cell phone
- **BIG STEP 200:**
Connect to the Wi-Fi "Hotspot" from inside the client device

BIG STEP 100 (Set up Wi-Fi hotspot emanating from the iPhone)

SMALL STEP 101:

Locate the "Settings" icon in the iPhone:



**BIG STEP 100 (Set up Wi-Fi hotspot
emanating from the iPhone) (continued)**

SMALL STEP 102:

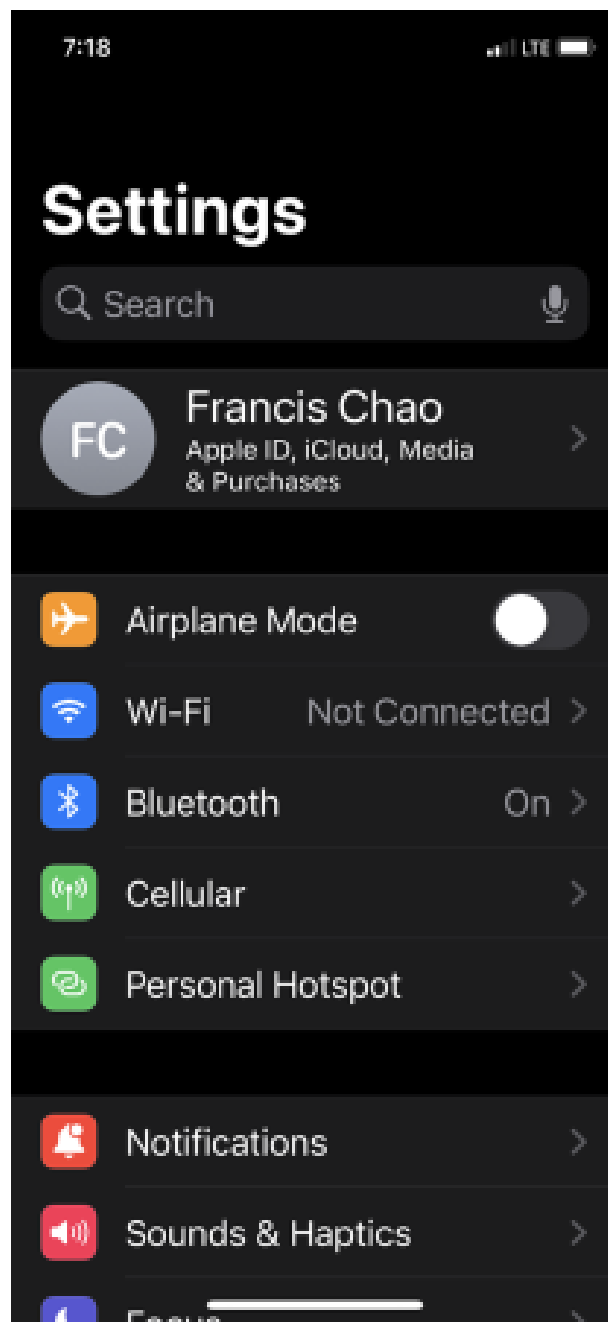
Tap on the "Settings" icon:



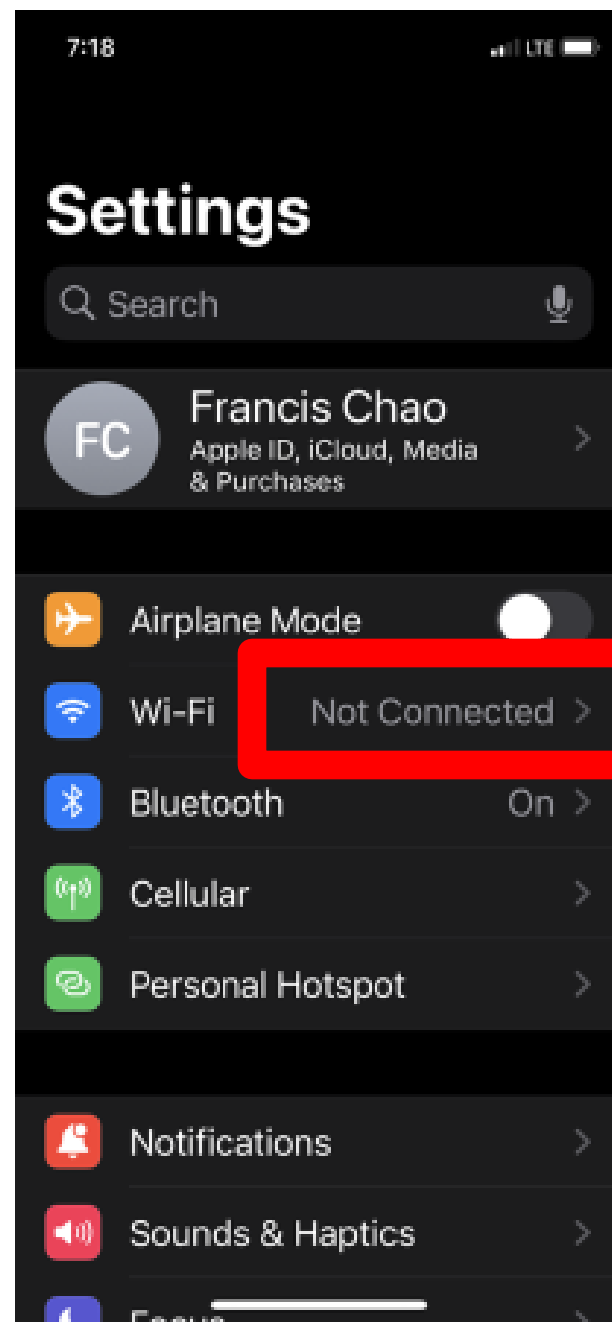
BIG STEP 100 (Set up Wi-Fi hotspot emanating from the iPhone) (continued)

SMALL STEP 103:

"Wi-Fi" needs to be in a "Not connected" state as shown:



34



34

BIG STEP 100 (Set up Wi-Fi hotspot emanating from the iPhone) (continued)

SMALL STEP 103:

If "Wi-Fi" is shown to be "Off":

Tap on "Wi-Fi" and change it to "On".
and then tap on "Settings" to get back to the main "Settings" screen.

Settings



Francis Chao

Apple ID, iCloud, Media
& Purchases



Airplane Mode



Wi-Fi

Off >



Bluetooth

On >



Cellular



Personal Hotspot



Notifications



Sounds & Haptics



Focus



Screen Time



Settings



Francis Chao

Apple ID, iCloud, Media
& Purchases



Airplane Mode



Wi-Fi

Off



Bluetooth

On



Cellular



Personal Hotspot



Notifications



Sounds & Haptics



Focus



Screen Time



7:30

LTE 

[Settings](#)

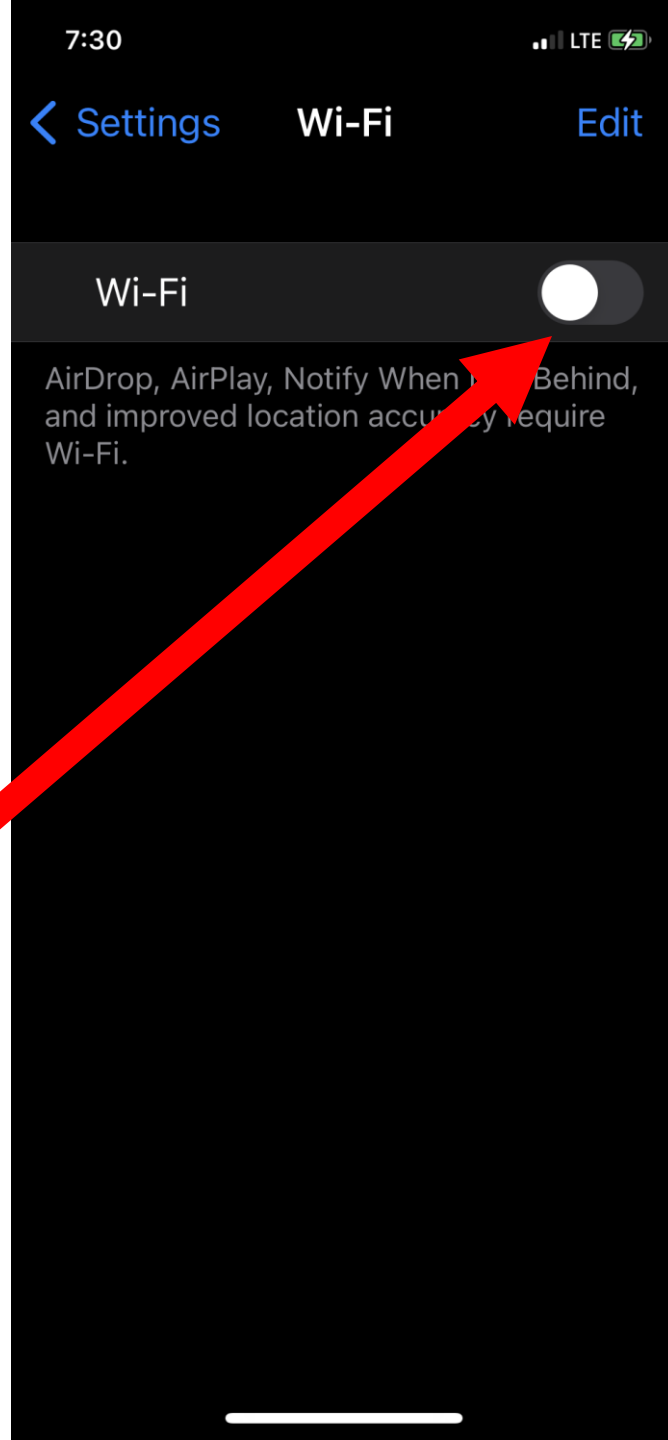
Wi-Fi

[Edit](#)

Wi-Fi



AirDrop, AirPlay, Notify When Left Behind, and improved location accuracy require Wi-Fi.



[Settings](#)

Wi-Fi

[Edit](#)

Wi-Fi



NETWORKS

pierview



rsayle-apt



SpectrumSetup-A0



Sundeck1!



TMOBILE-A4BB



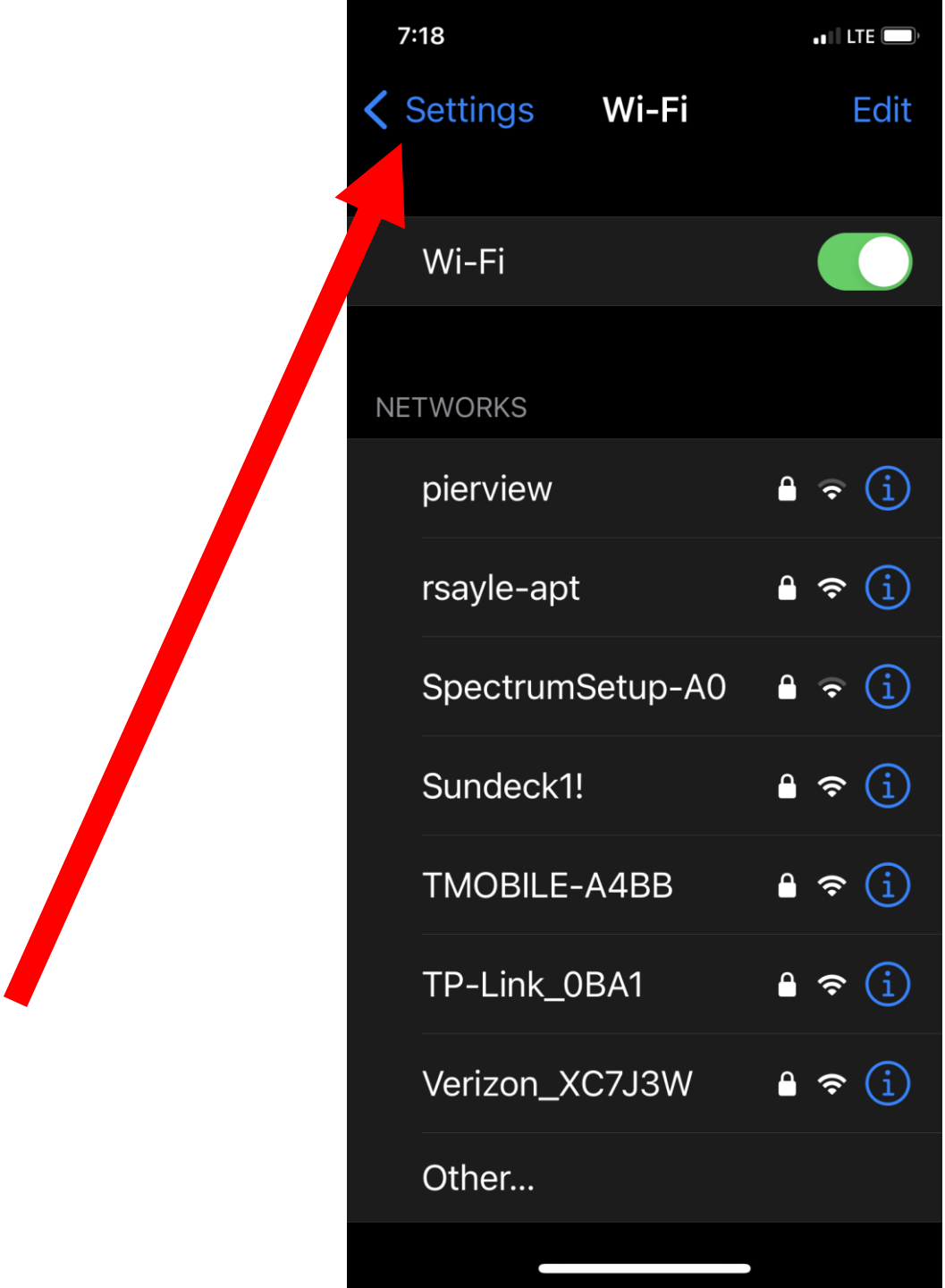
TP-Link_0BA1

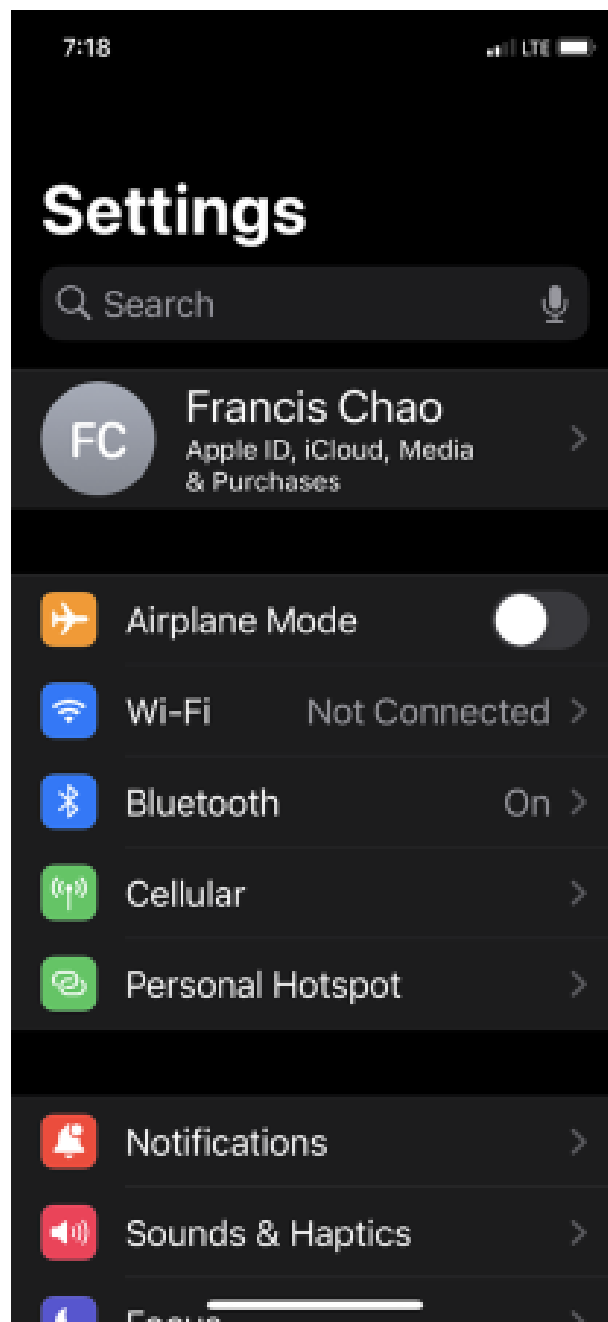


Verizon_XC7J3W

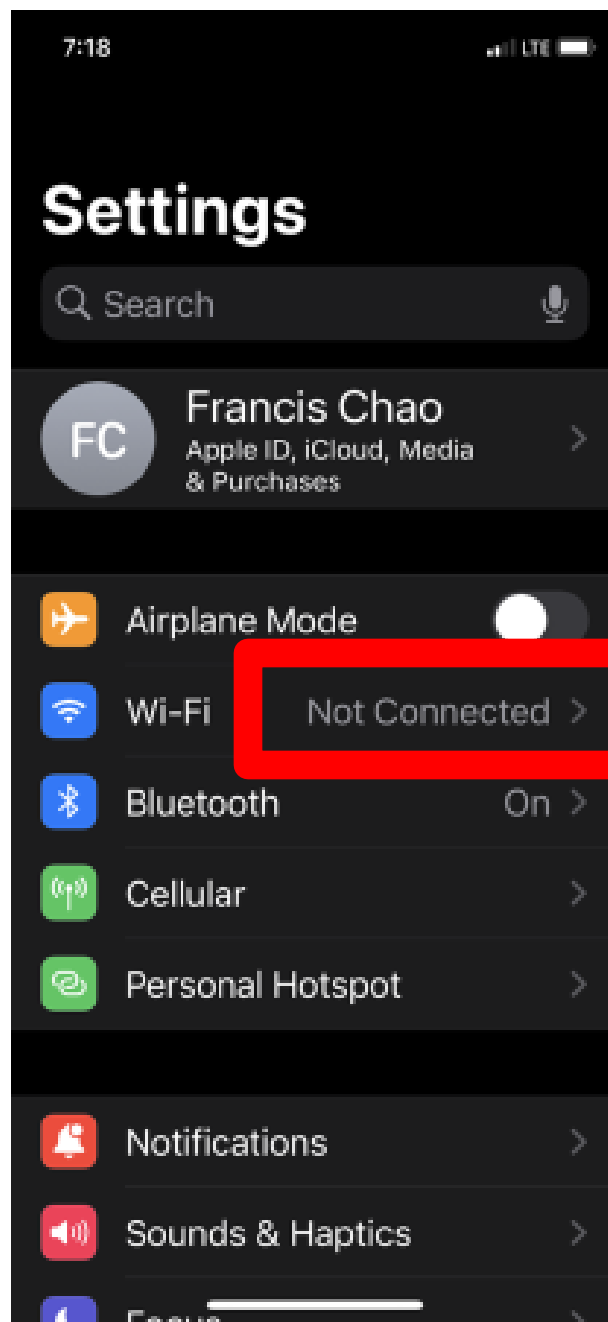


Other...





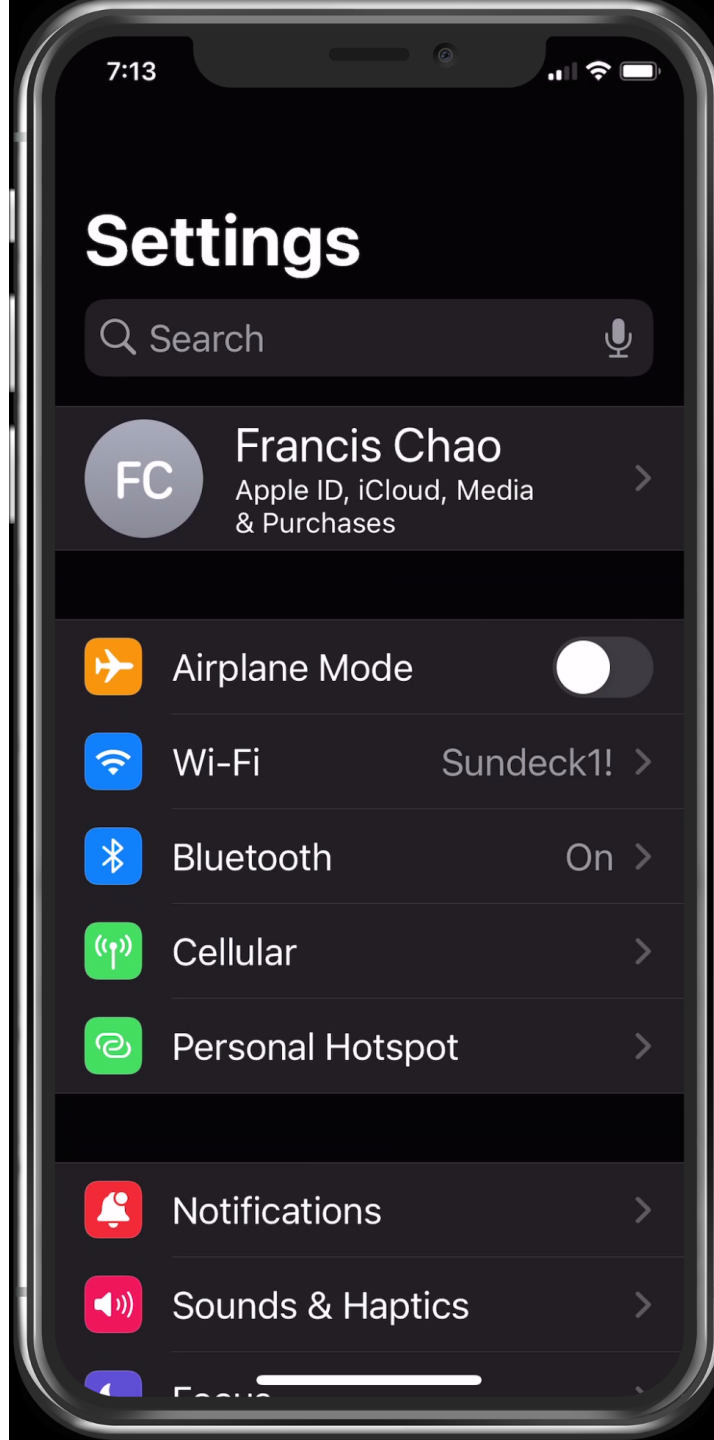
34

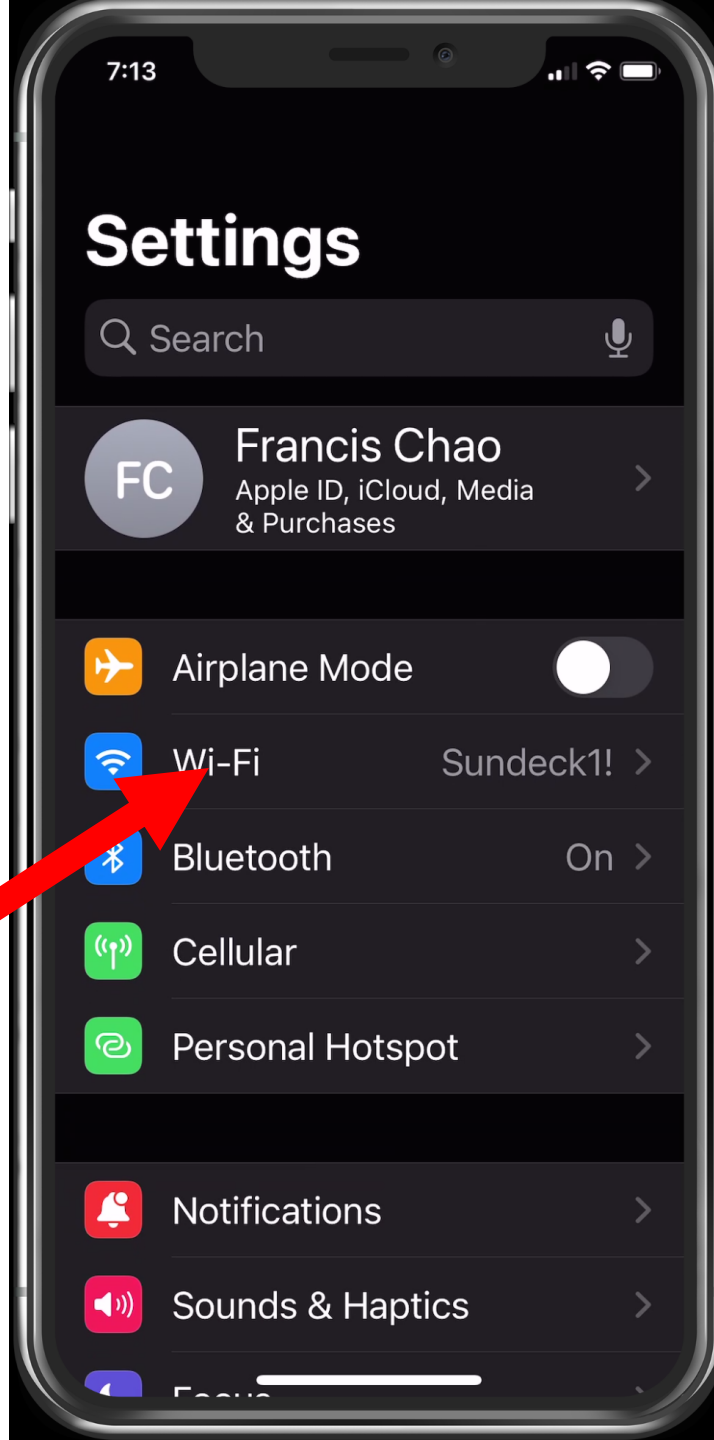


34

BIG STEP 100 (Set up Wi-Fi hotspot
emanating from the iPhone) (continued)
SMALL STEP 103 (continued)

If "Wi-Fi" is shown as being connected to an existing active "Wireless Access Point", tap on "Wi-Fi" and then turn off "Wi-Fi" and then turn "Wi-Fi" back on and then for each "Wireless Access Point" that it attempts to join, tap on the circled "i" icon tell it to "Forget this network"; then tap on "Settings" to get back to the main "Settings" screen.







Settings

Search



Francis Chao

Apple ID, iCloud, Media
& Purchases



Airplane Mode



Wi-Fi

Off >



Bluetooth

On >



Cellular



Personal Hotspot



Notifications

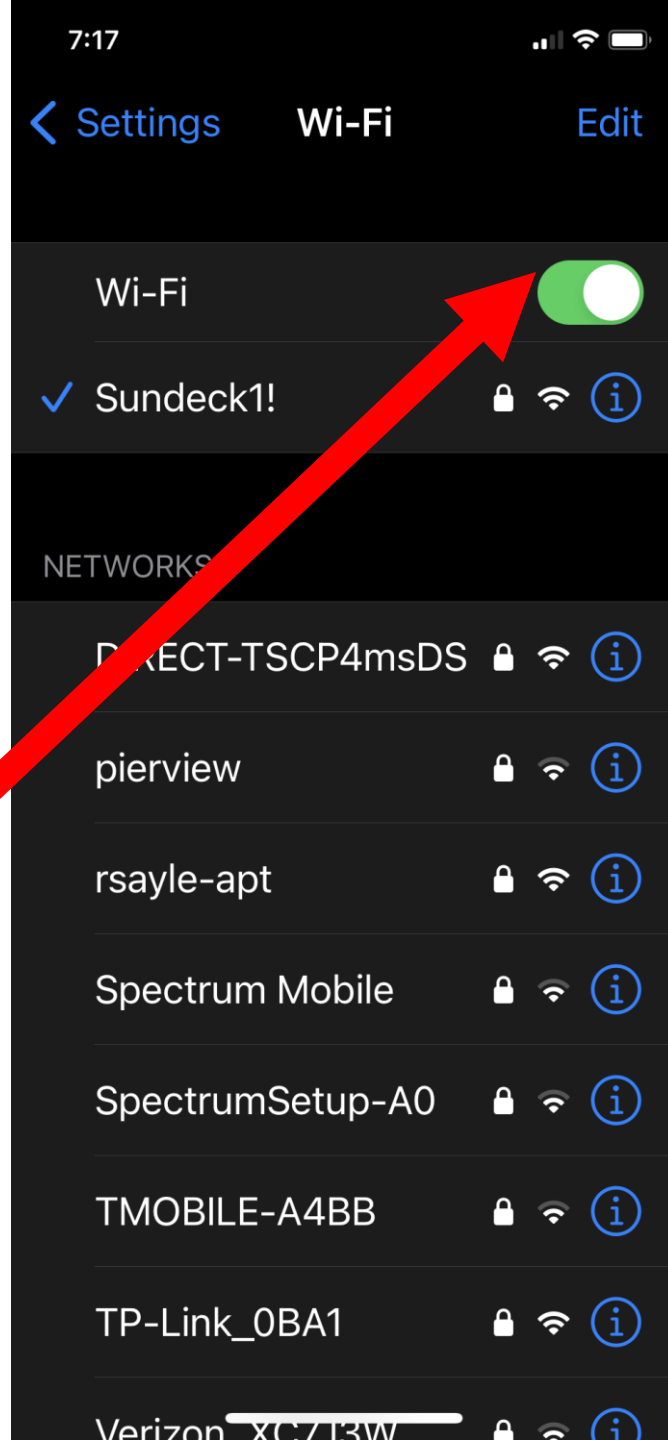


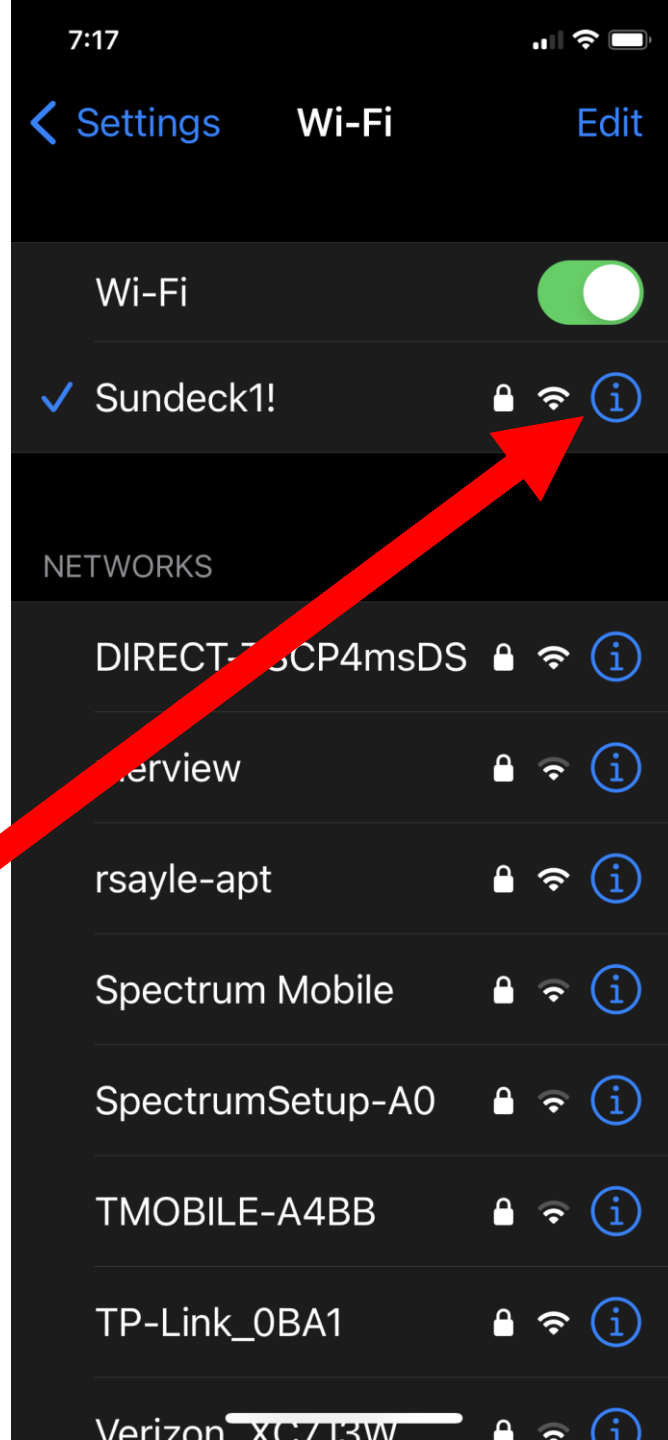
Sounds & Haptics



Focus







[< Wi-Fi](#)

Sundeck1!

[Forget This Network](#)

Auto-Join



Password



Low Data Mode



Low Data Mode helps reduce your iPhone data usage over your cellular network or specific Wi-Fi networks you select. When Low Data Mode is turned on, automatic updates and background tasks, such as Photos syncing, are paused.

Private Wi-Fi Address



Wi-Fi Address 8A:17:8D:AA:BA:21

Using a private address helps reduce tracking of your iPhone across different Wi-Fi networks.

[< Wi-Fi](#)

Sundeck1!

[Forget This Network](#)

Auto-Join



Password



Low Data Mode



Low Data Mode helps reduce your iPhone data usage over your cellular network or specific Wi-Fi networks you select. When Low Data Mode is turned on, automatic updates and background tasks, such as Photos syncing, are paused.

Private Wi-Fi Address



Wi-Fi Address 8A:17:8D:AA:BA:21

Using a private address helps reduce tracking of your iPhone across different Wi-Fi networks.

< Wi-Fi Sundeck1!

Forget This Network

Auto-Join



**Forget Wi-Fi Network
"Sundeck1!" ?**

Your device and other devices
using iCloud Keychain will no
longer join this Wi-Fi network.

Cancel

Forget

Private Wi-Fi Address



Wi-Fi Address 8A:17:8D:AA:BA:21

Using a private address helps reduce
tracking of your iPhone across different
Wi-Fi networks.

< Wi-Fi Sundeck1!

Forget This Network

Auto-Join



**Forget Wi-Fi Network
"Sundeck1!" ?**

Your device and other devices
using iCloud Keychain will no
longer join this Wi-Fi network.

Cancel

Forget

Low Data Mode is turned on, automatic
updates and background tasks, such as
photos syncing, are paused.

Private Wi-Fi Address



Wi-Fi Address 8A:17:8D:AA:BA:21

Using a private address helps reduce
tracking of your iPhone across different
Wi-Fi networks.

[Settings](#)

Wi-Fi

[Edit](#)

Wi-Fi



NETWORKS

pierview



rsayle-apt



SpectrumSetup-A0



Sundeck1!



TMOBILE-A4BB



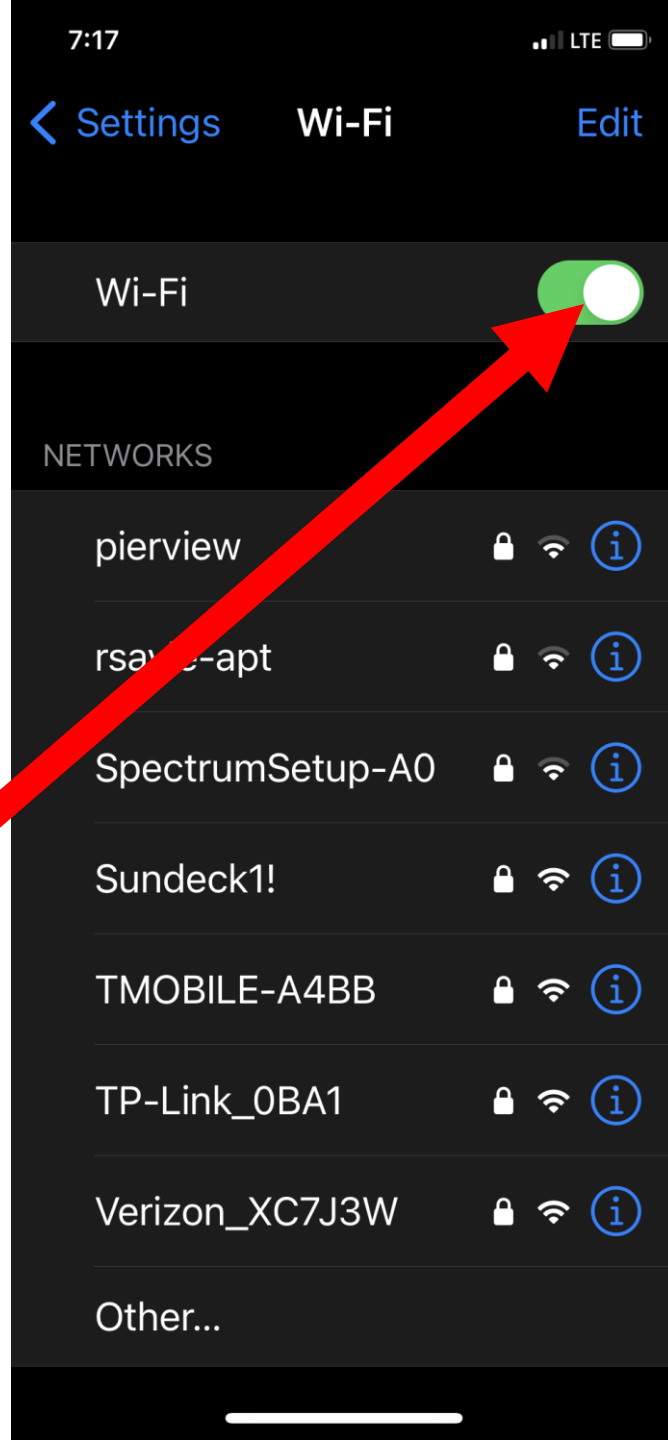
TP-Link_0BA1



Verizon_XC7J3W



Other...



7:18

LTE

< Settings

Wi-Fi

Edit

Wi-Fi



AirDrop, AirPlay, Notify When Left Behind, and improved location accuracy require Wi-Fi.

Settings

Search



Francis Chao

Apple ID, iCloud, Media
& Purchases



Airplane Mode



Wi-Fi

Off >



Bluetooth

On >



Cellular



Personal Hotspot



Notifications

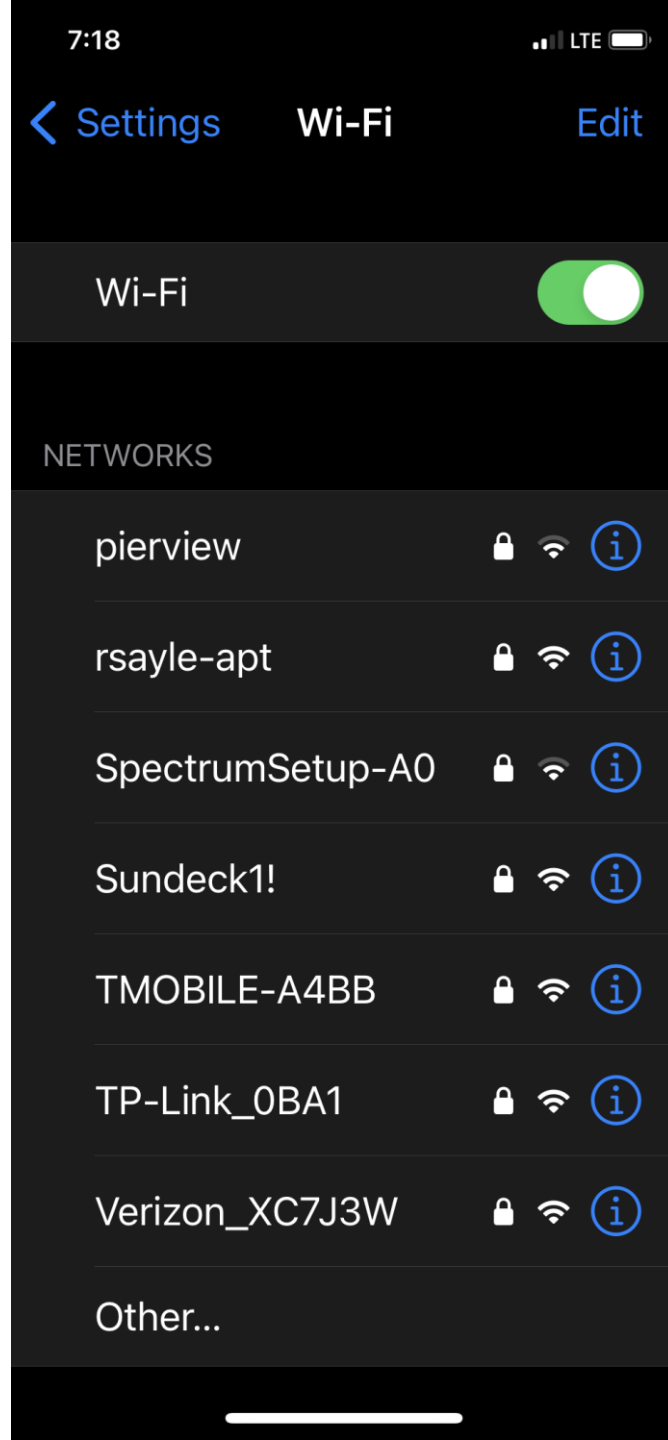


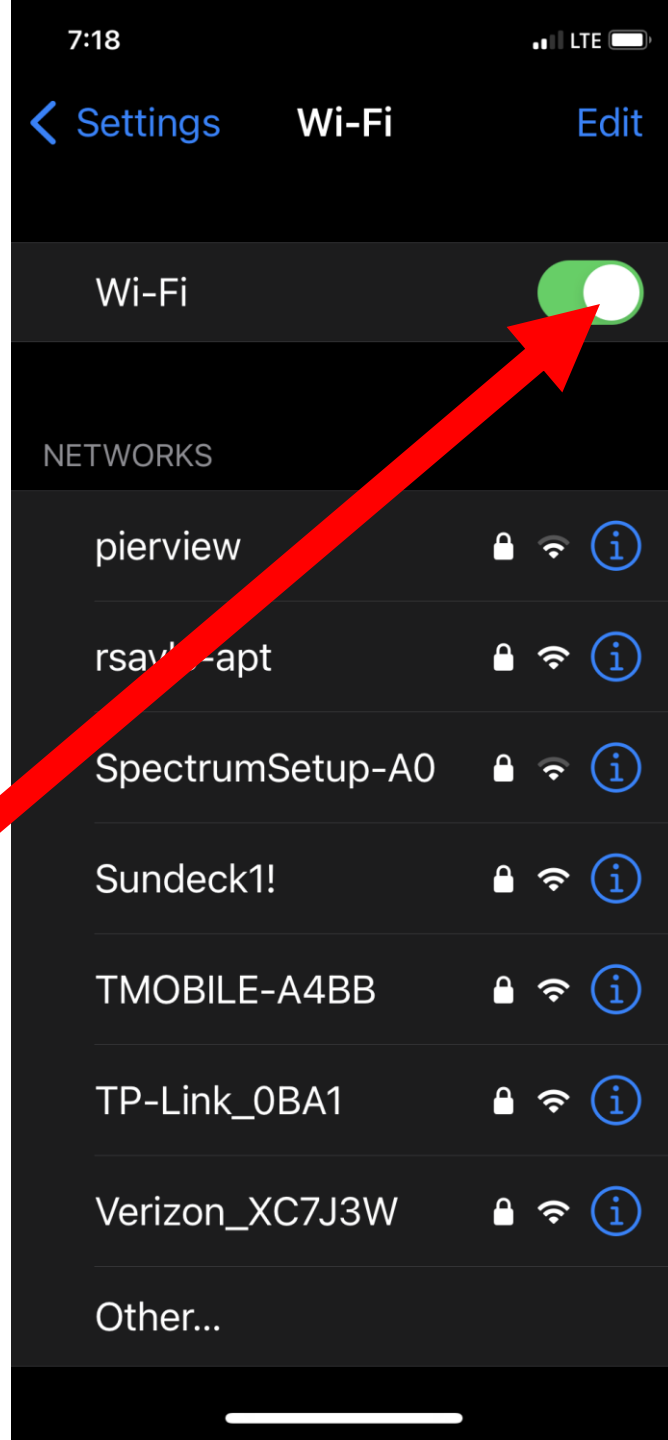
Sounds & Haptics



Focus







Settings

Search



Francis Chao

Apple ID, iCloud, Media
& Purchases



Airplane Mode



Wi-Fi

Not Connected



Bluetooth

On



Cellular



Personal Hotspot



Notifications



Sounds & Haptics



Focus



[< Settings](#)

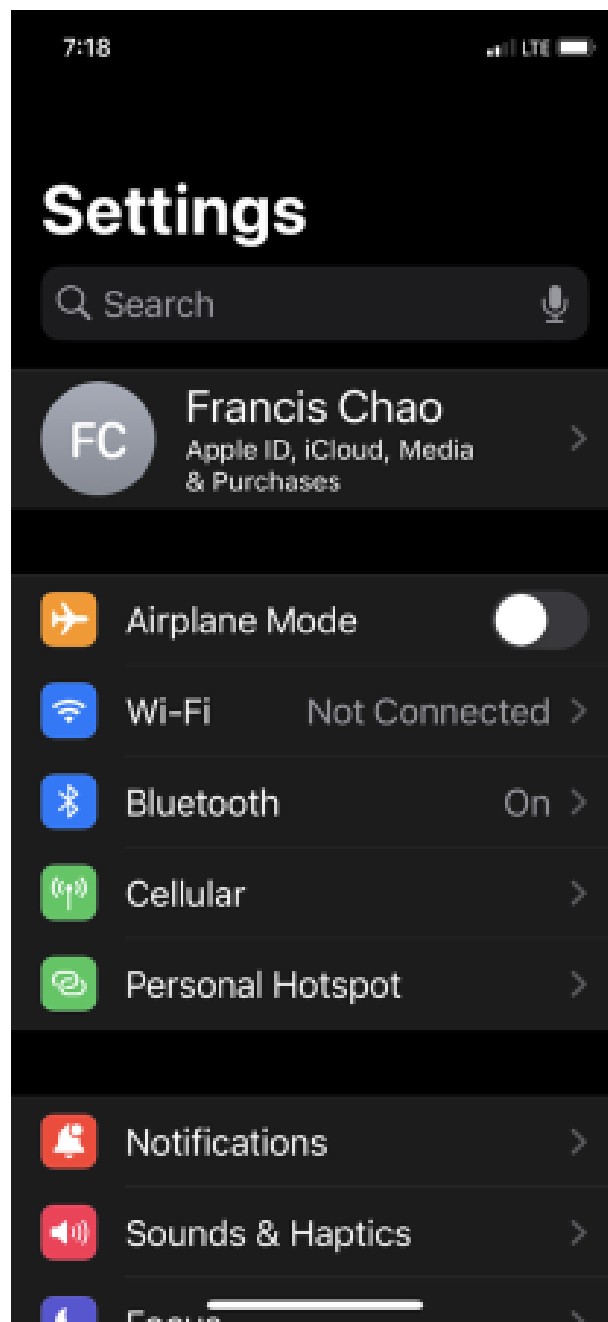
Wi-Fi

[Edit](#)

Wi-Fi

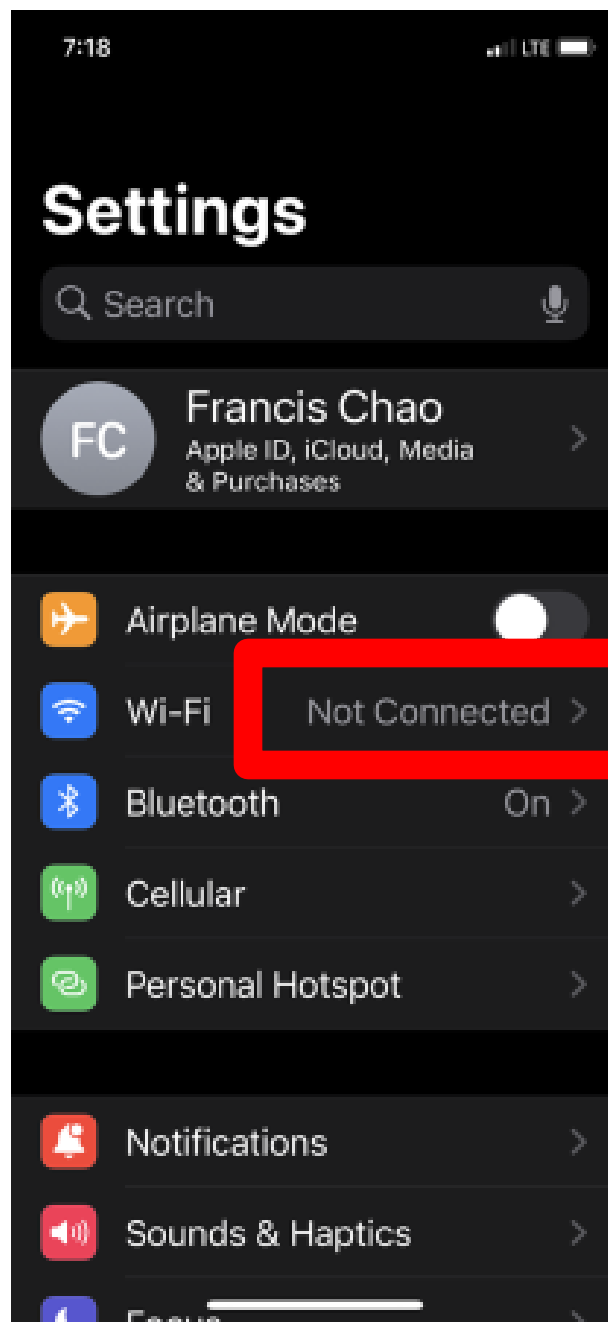


AirDrop, AirPlay, Notify When Left Behind, and improved location accuracy require Wi-Fi.



34

46



34

47

BIG STEP 100 (Set up Wi-Fi hotspot emanating from the iPhone) (continued)

SMALL STEP 104:

Tap on "Personal Hotspot" in the main "Settings" screen of the "iPhone".

8:31



Settings



Francis Chao

Apple ID, iCloud,
Media & Purchases



Airplane Mode



Wi-Fi



Bluetooth

On



Cellular



Personal Hotspot Off

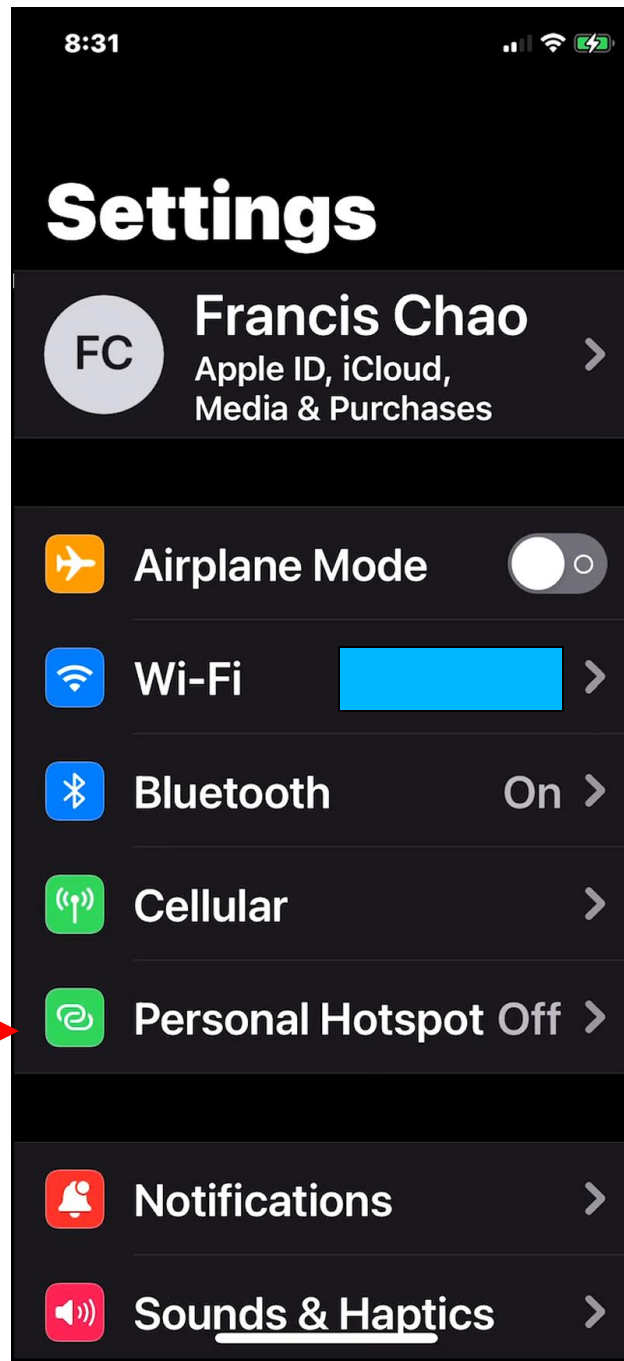


Notifications



Sounds & Haptics



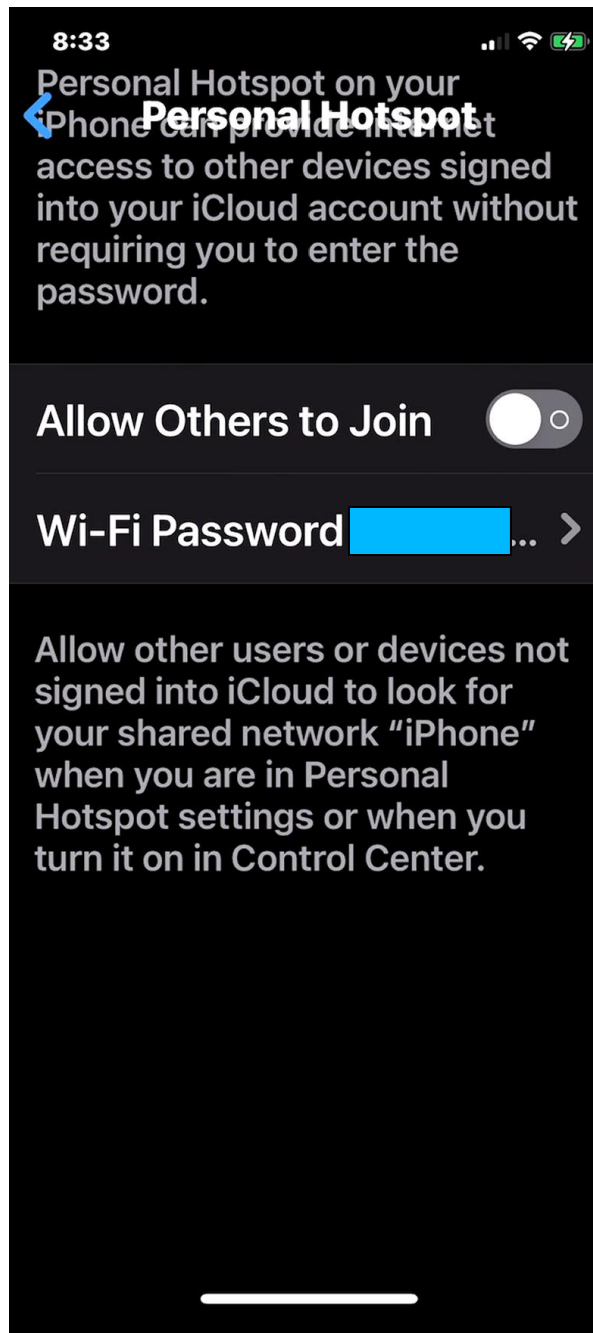


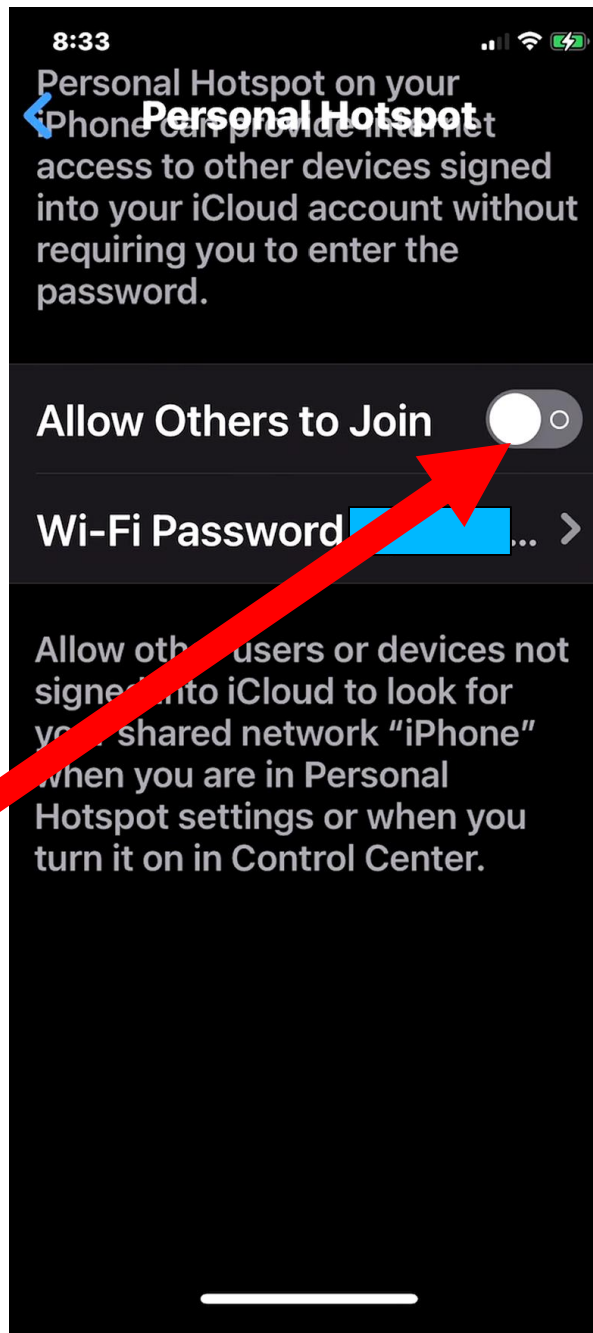
BIG STEP 100 (Set up Wi-Fi hotspot emanating from the iPhone) (continued)

SMALL STEP 105:

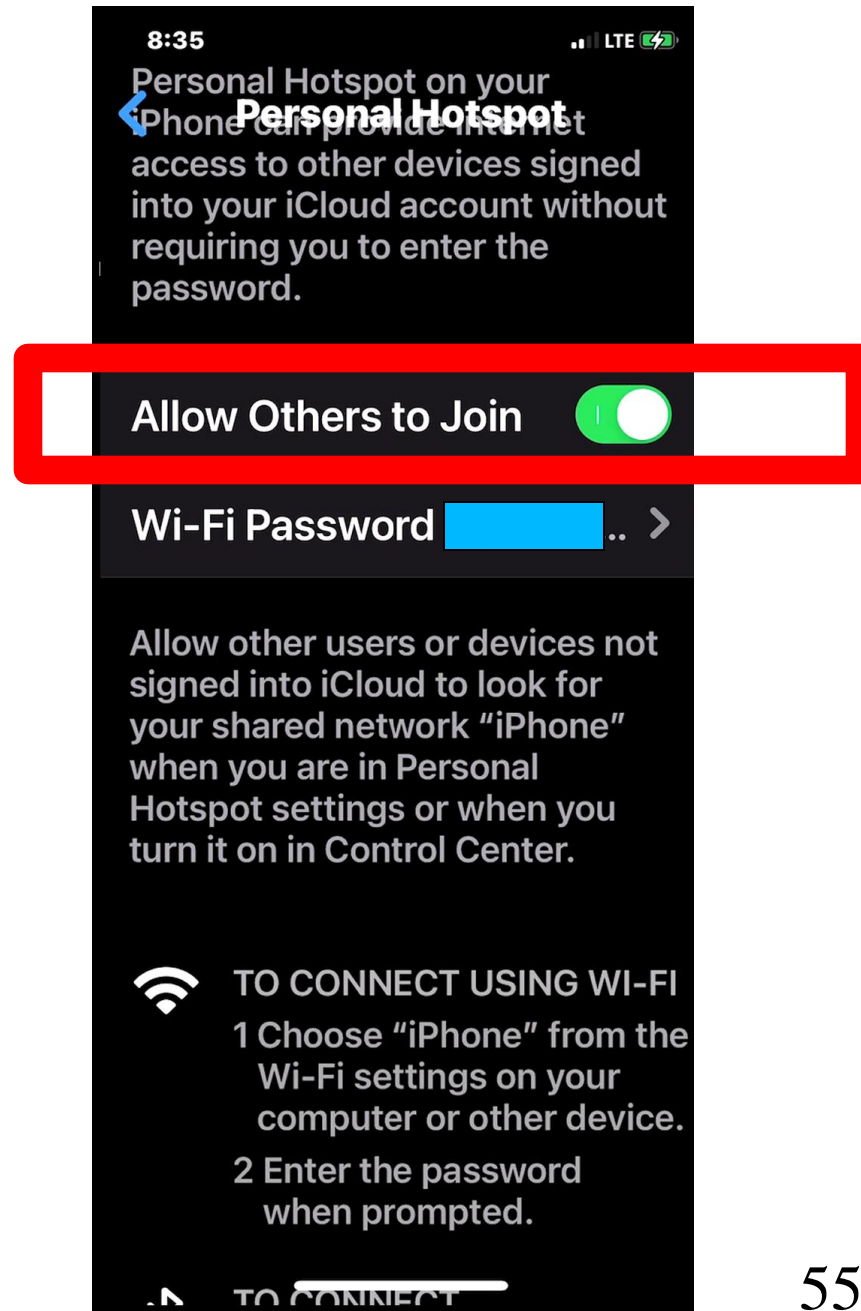
If "Allow Others to Join" is not enabled tap on "Allow Others To Join" to enable it.

If "Allow Others to Join" is already enabled, tap on it twice to turn it off and then back on:









BIG STEP 100 (Set up Wi-Fi hotspot emanating from the iPhone) (continued)

SMALL STEP 106:

Tap on "Password":



BIG STEP 100 (Set up Wi-Fi hotspot emanating from the iPhone) (continued)

SMALL STEP 107:

Modify the password if you want to and then write it down somewhere.

BIG STEP 100 (Set up Wi-Fi hotspot emanating from the iPhone) (continued)

SMALL STEP 108:

Write down the password on a piece of paper somewhere.

8:37 LTE

[Cancel](#) **Wi-Fi Passw...** [Done](#)

Password

Other users will join your shared Wi-Fi network using this password.

The password must contain at least 8 characters. Changing the password will disconnect any currently connected users.

Passwords

q w e r t y u i o p

a s d f g h j k l

z x c v b n m

123 space [done](#)

BIG STEP 100 (Set up Wi-Fi hotspot emanating from the iPhone) (continued)

- **SMALL STEP 109:**
Tap on "Done" in the upper right-hand corner of the cell phone screen:

8:37LTE

[Cancel](#) Wi-Fi Passw... [Done](#)

Password

Other users will join your shared Wi-Fi network using this password.

The password must contain at least 8 characters. Changing the password will disconnect any currently connected users.

⌨ Passwords

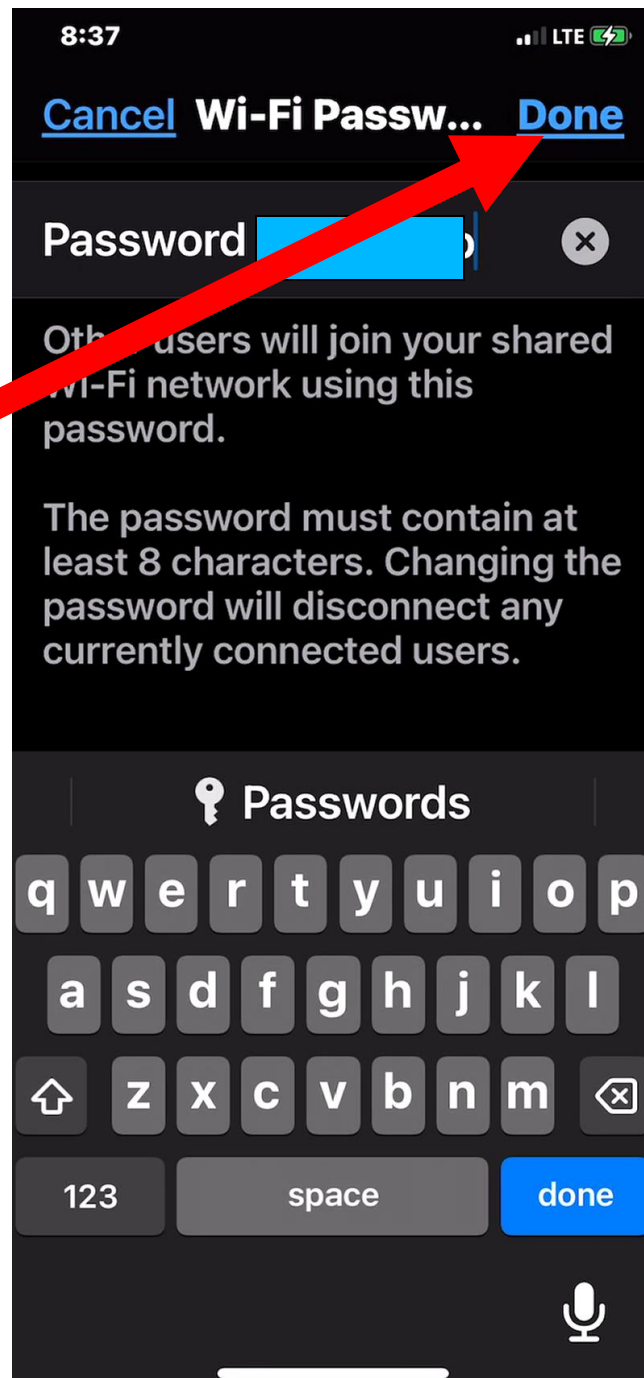
q w e r t y u i o p

a s d f g h j k l

⬆ z x c v b n m ⬆

123 space done

🎤



BIG STEP 100 (Set up Wi-Fi hotspot emanating from the iPhone) (continued)

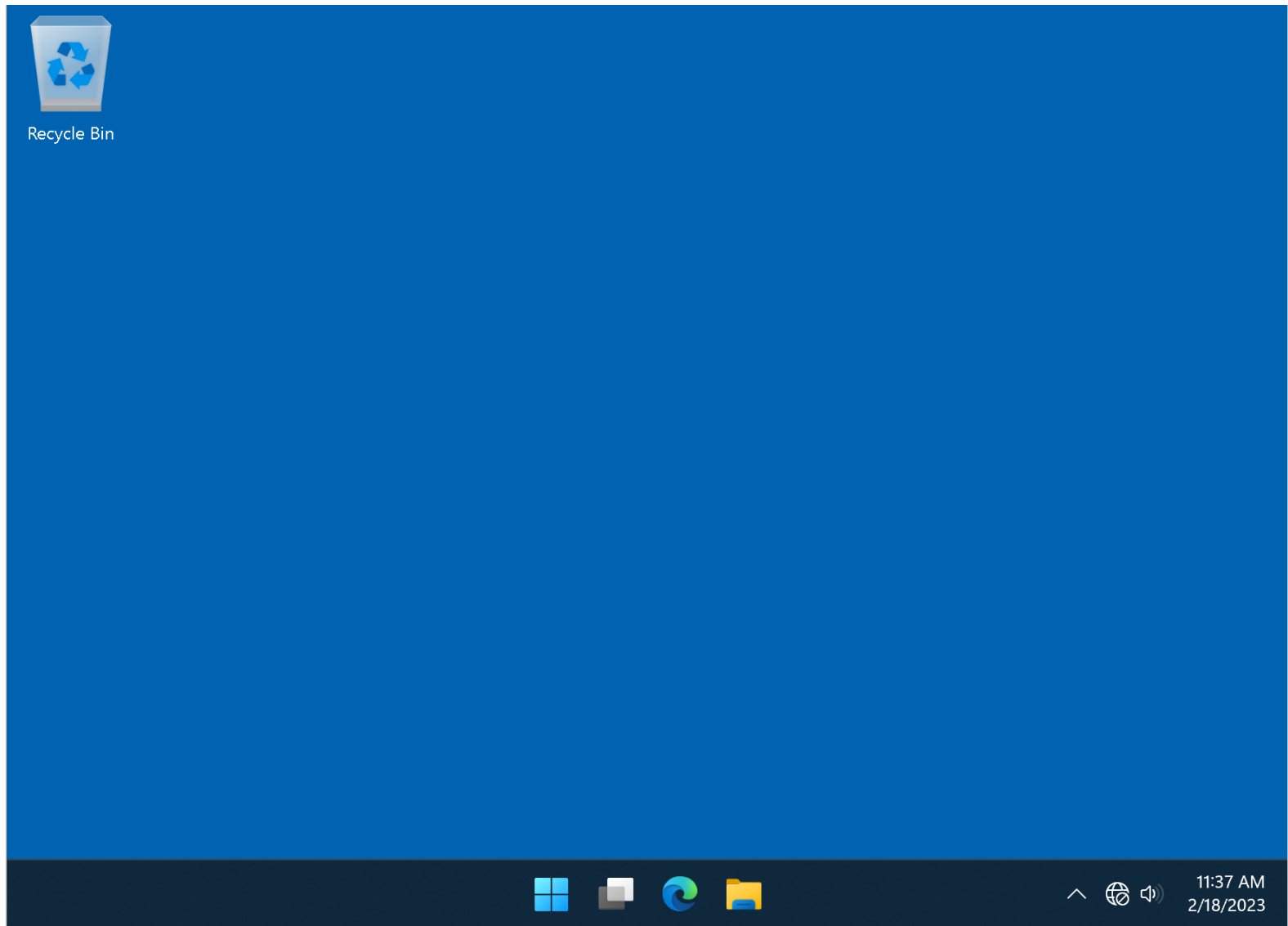
- **SMALL STEP 110:**
Swipe upward from the bottom of the screen to close the "Settings" app

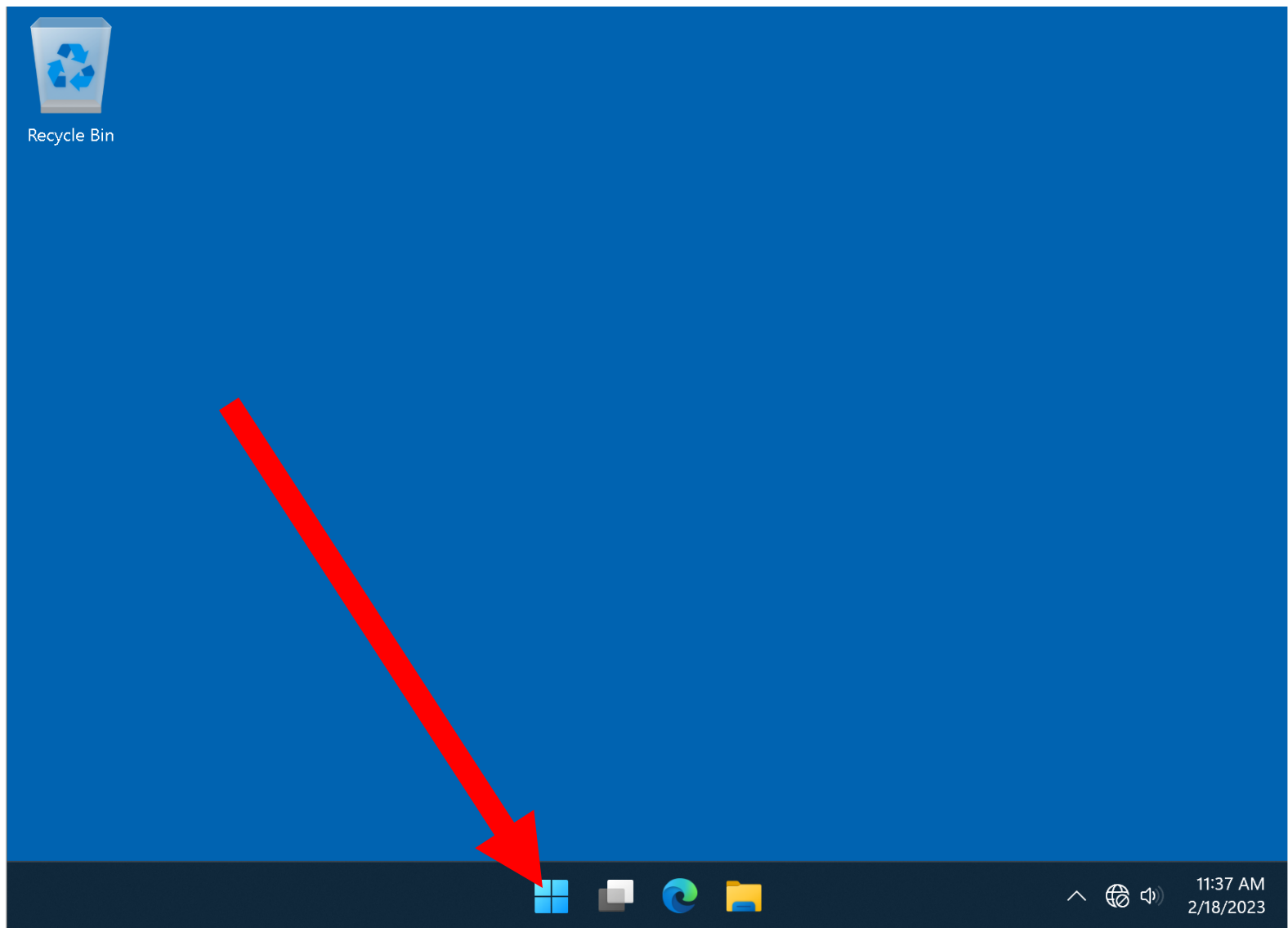
BIG STEP 200 (Connect to the Wi-Fi Hotspot from the Client Device)

- SMALL STEP 201:
From the client computer, tablet, or cell phone, go to either "Network Connections" or "Settings"

BIG STEP 200 (Connect to the Wi-Fi Hotspot from the Client Device)

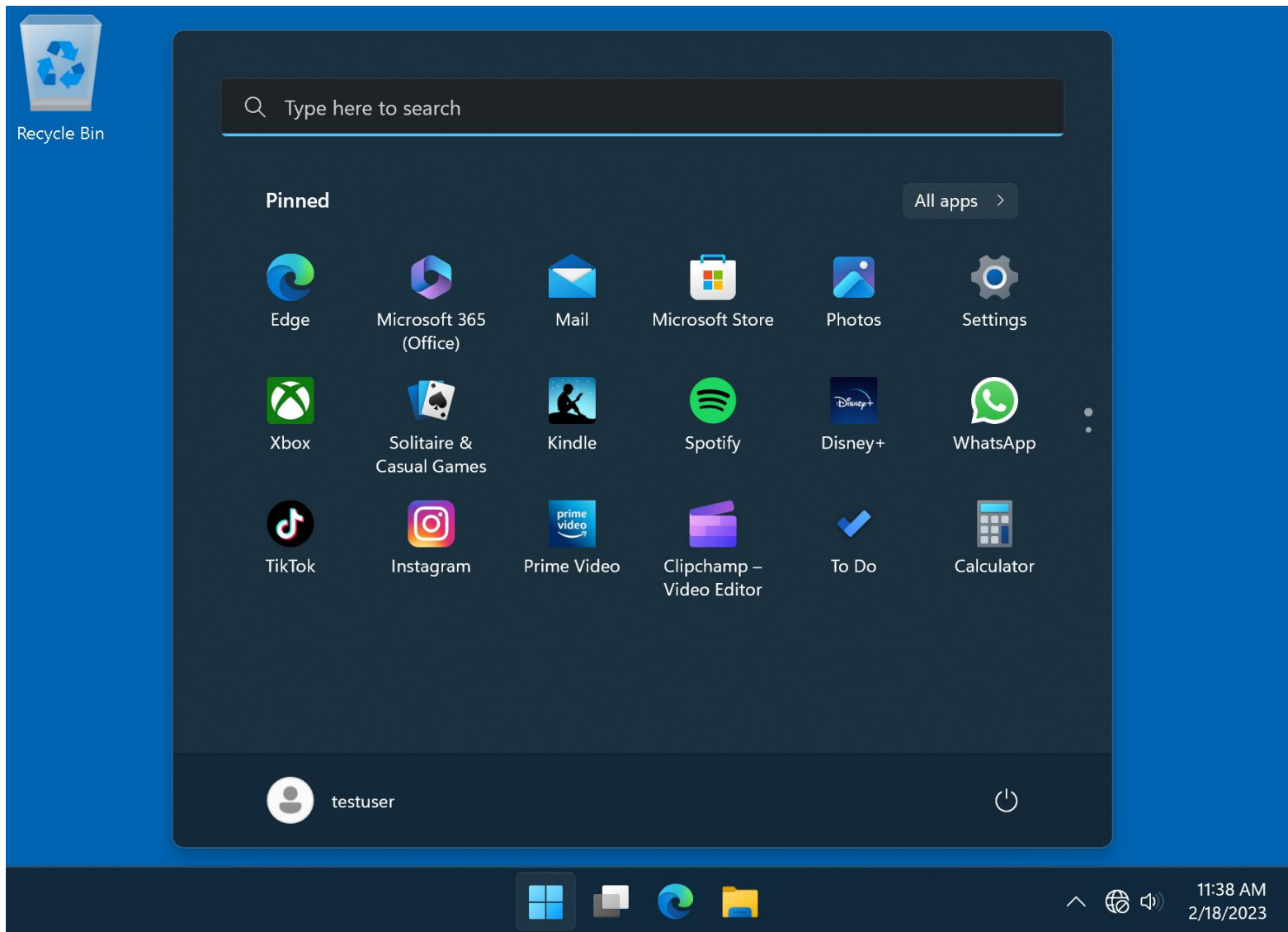
- SMALL STEP 202:
From a Windows.. computer, use the left mouse button to click on the "Start" button:

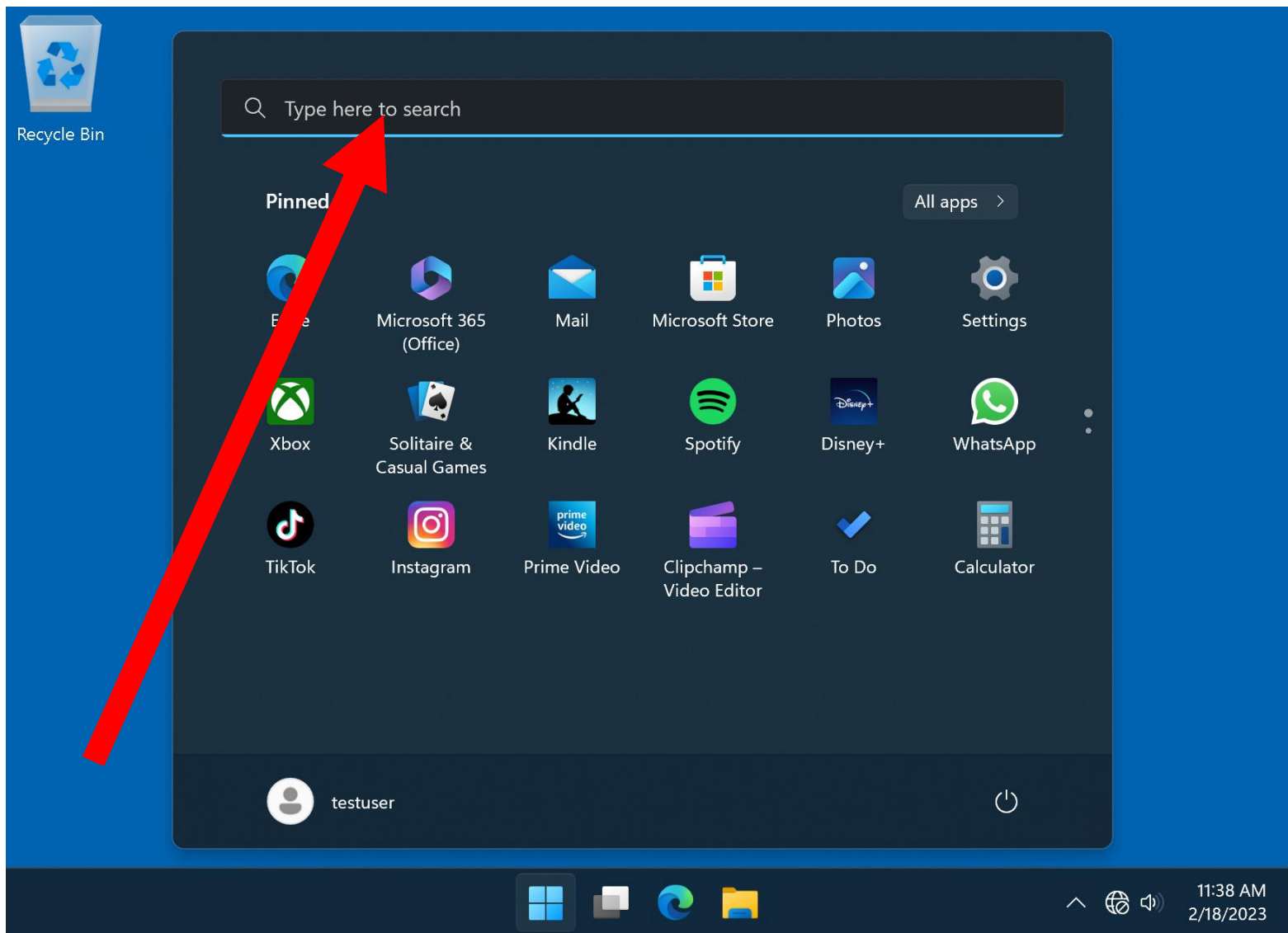




BIG STEP 200 (Connect to the Wi-Fi Hotspot from the Client Device)

- SMALL STEP 203:
Click on the "Search" field:





BIG STEP 200 (Connect to the Wi-Fi Hotspot from the Client Device)

- SMALL STEP 204:
A pop-up window will be displayed:



Recycle Bin

🔍 Type here to search

Suggested



Get Started



Microsoft Edge



Tips



Email and accounts



Snipping Tool



Check for updates



Paint



Themes and related settings



Calculator



11:39 AM
2/18/2023

BIG STEP 200 (Connect to the Wi-Fi Hotspot from the Client Device)

- SMALL STEP 205:
Type in
Network Connections
into the search box of the pop-up
window:



Recycle Bin

Q network connections



Best match



View **network connections**

Control panel



11:42 AM
2/18/2023

BIG STEP 200 (Connect to the Wi-Fi Hotspot from the Client Device)

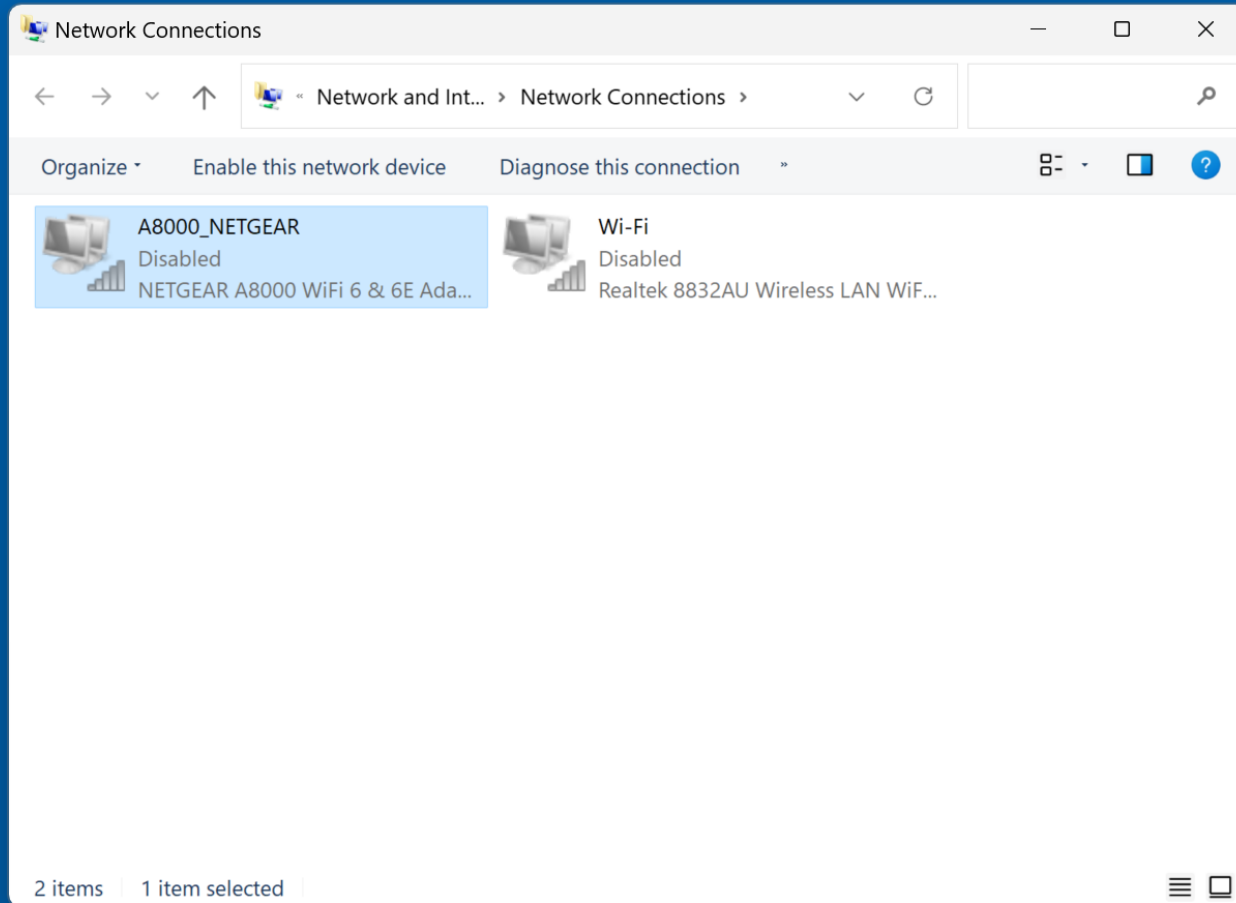
- SMALL STEP 206:
Press the Enter key of the computer's keyboard.

BIG STEP 200 (Connect to the Wi-Fi Hotspot from the Client Device)

- SMALL STEP 207:
A "Network Connections" window will be displayed.



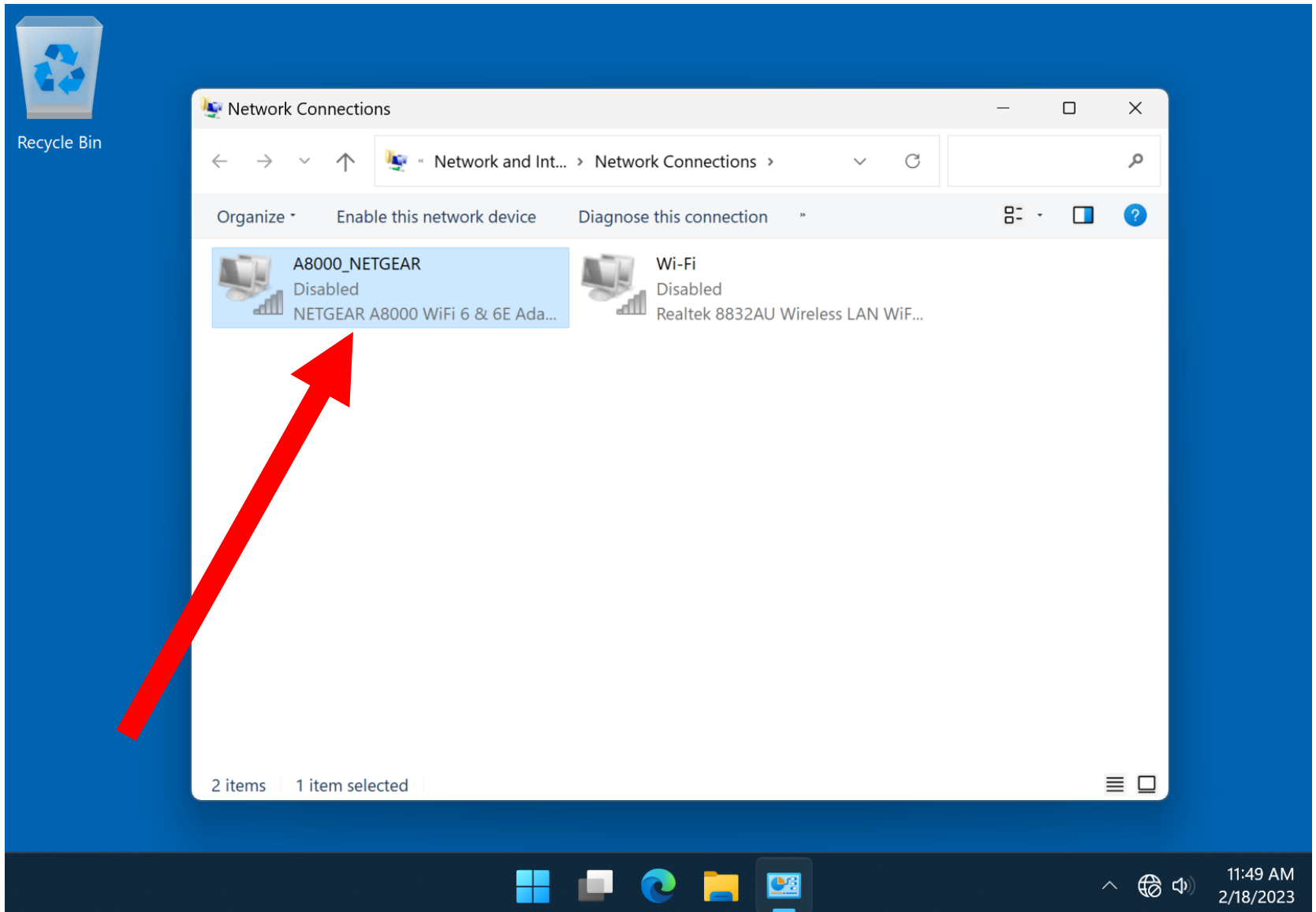
Recycle Bin

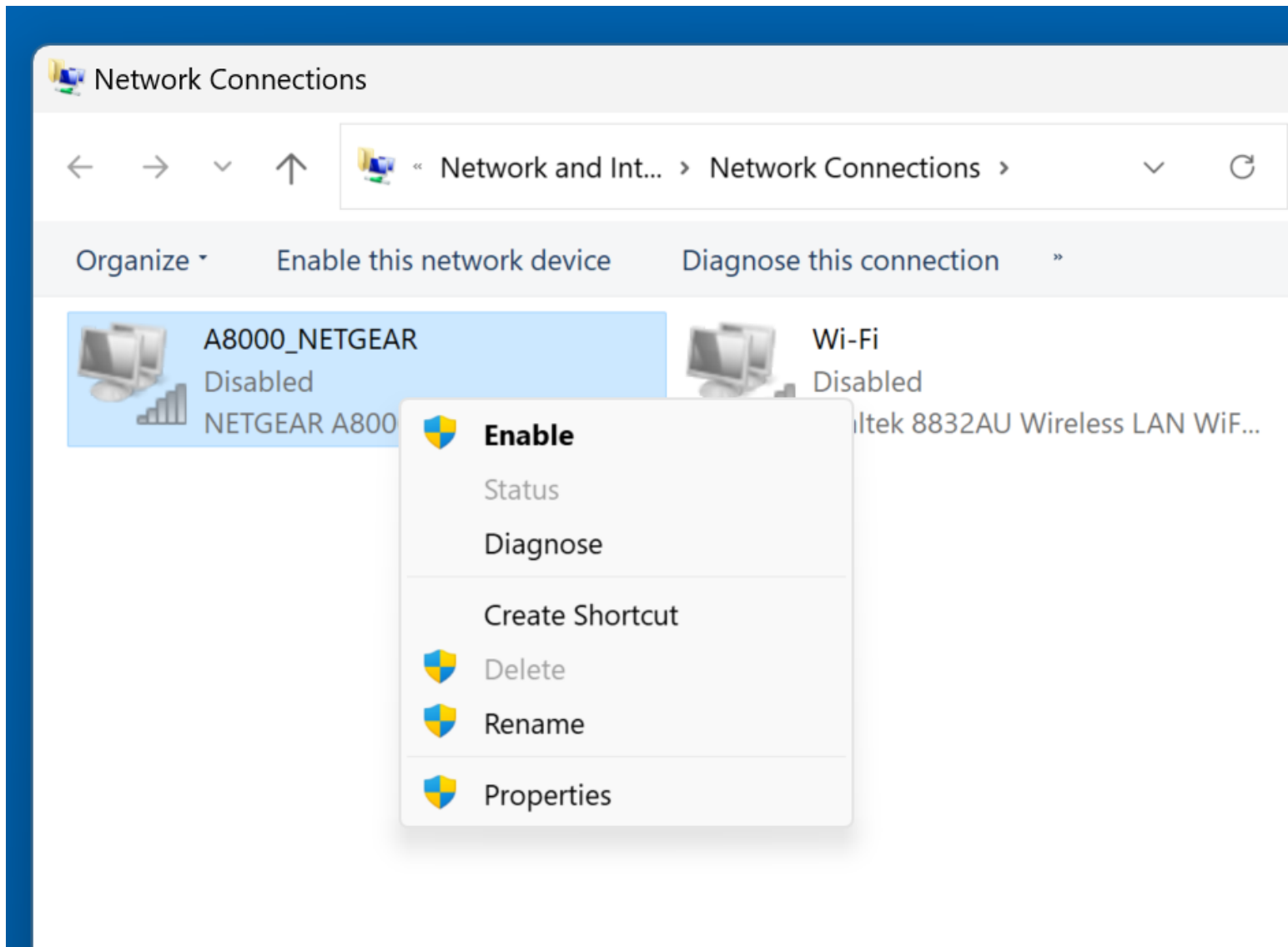


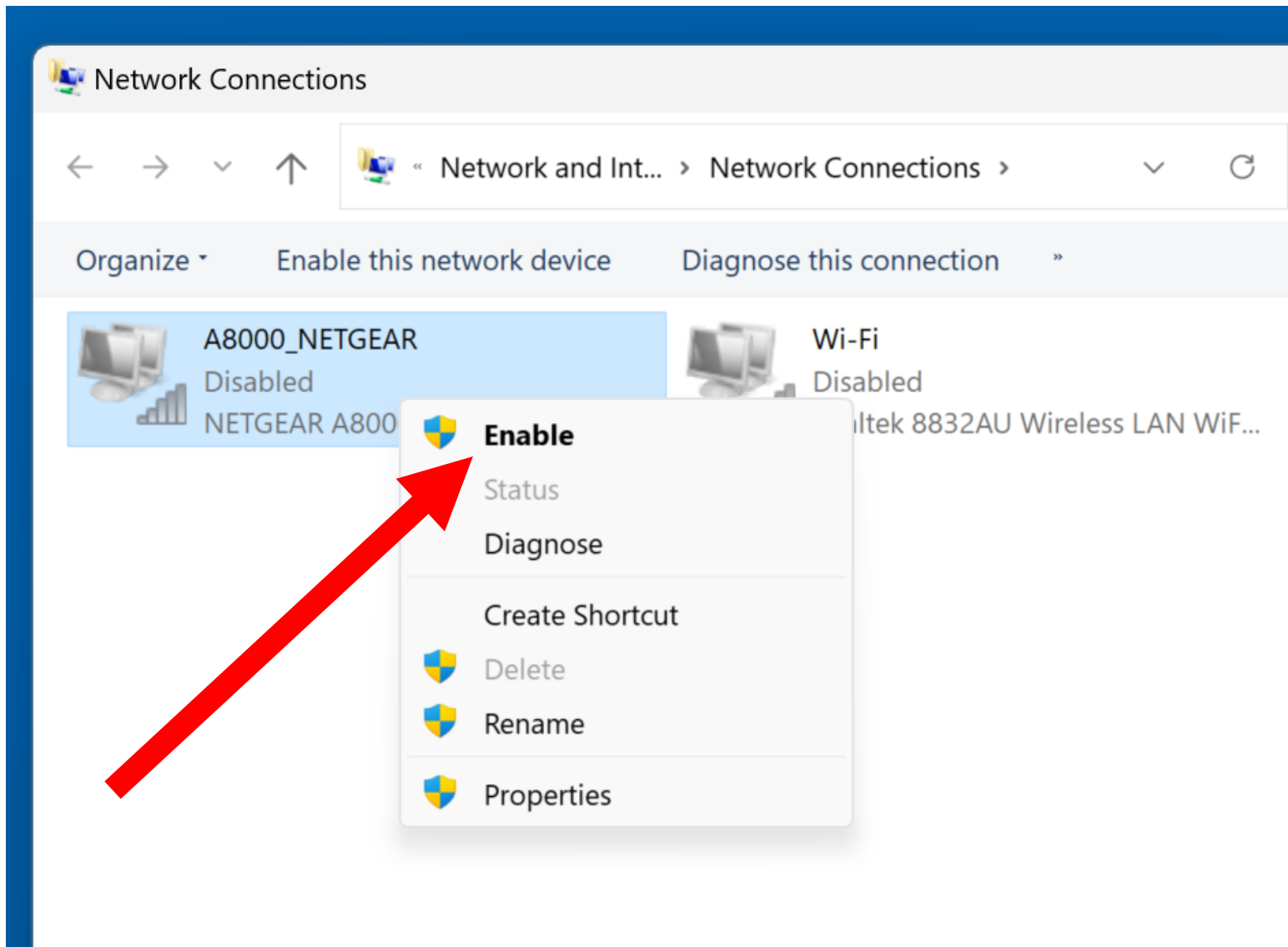
11:49 AM
2/18/2023

BIG STEP 200 (Connect to the Wi-Fi Hotspot from the Client Device) (continued)

- **SMALL STEP 208:**
If no "Wi-Fi adapter" is "enabled"
(= all Wi-Fi adapters are disabled),
pick one and enable it by using the
right mouse button to click on it:







BIG STEP 200 (Connect to the Wi-Fi Hotspot from the Client Device) (continued)

- SMALL STEP 208 (continued):
After you enable a Wi-Fi adapter, it will show that it is now "Not connected":

Network Connections



« Network and Intern... > Network Connections



Organize ▾

Connect To

Disable this network device

Diagnose this connection



A8000_NETGEAR

Not connected

NETGEAR A8000 WiFi 6 & 6E Ada...



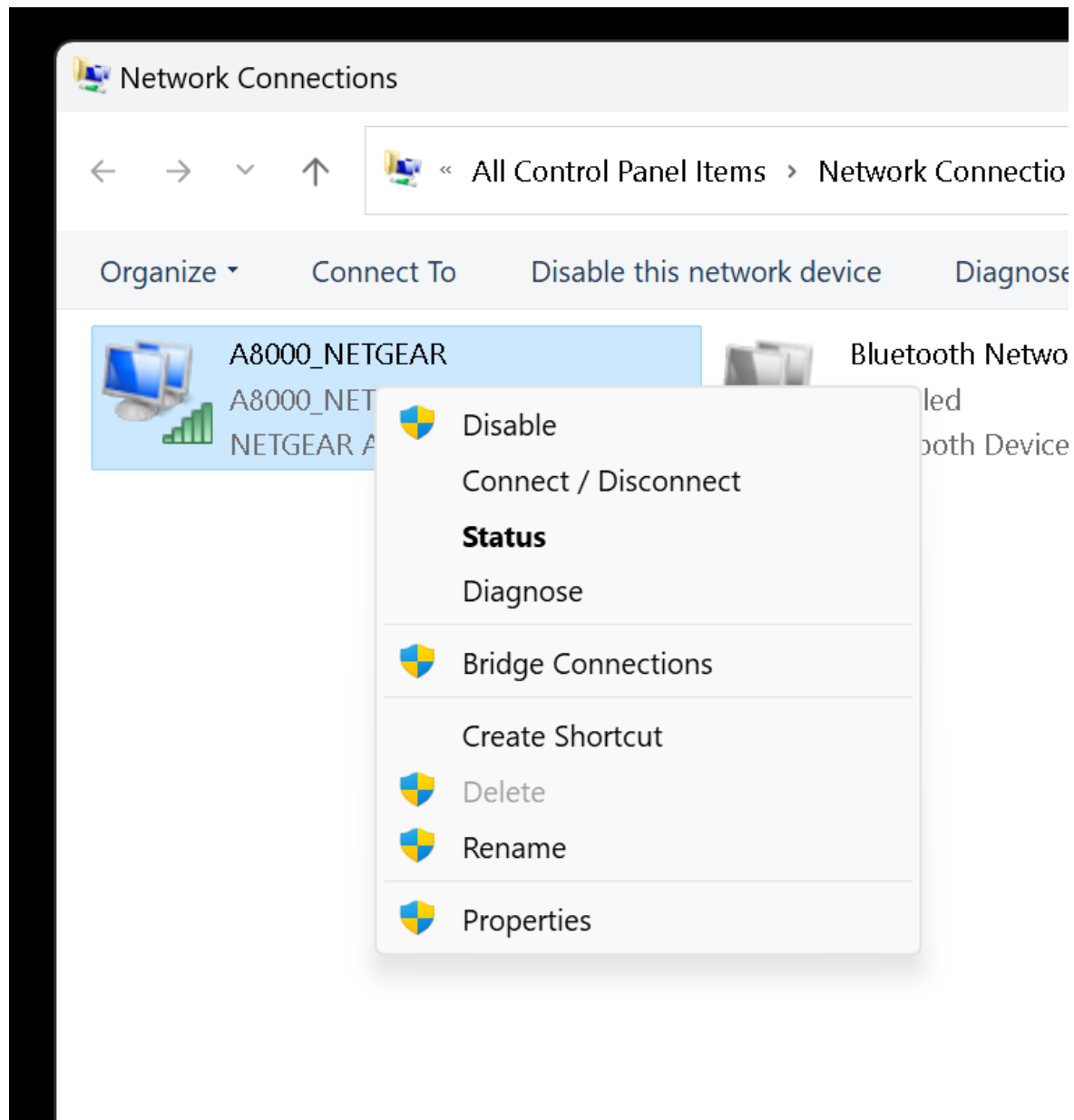
Wi-Fi

Disabled

Realtek 8832AU Wireless LAN WiF...

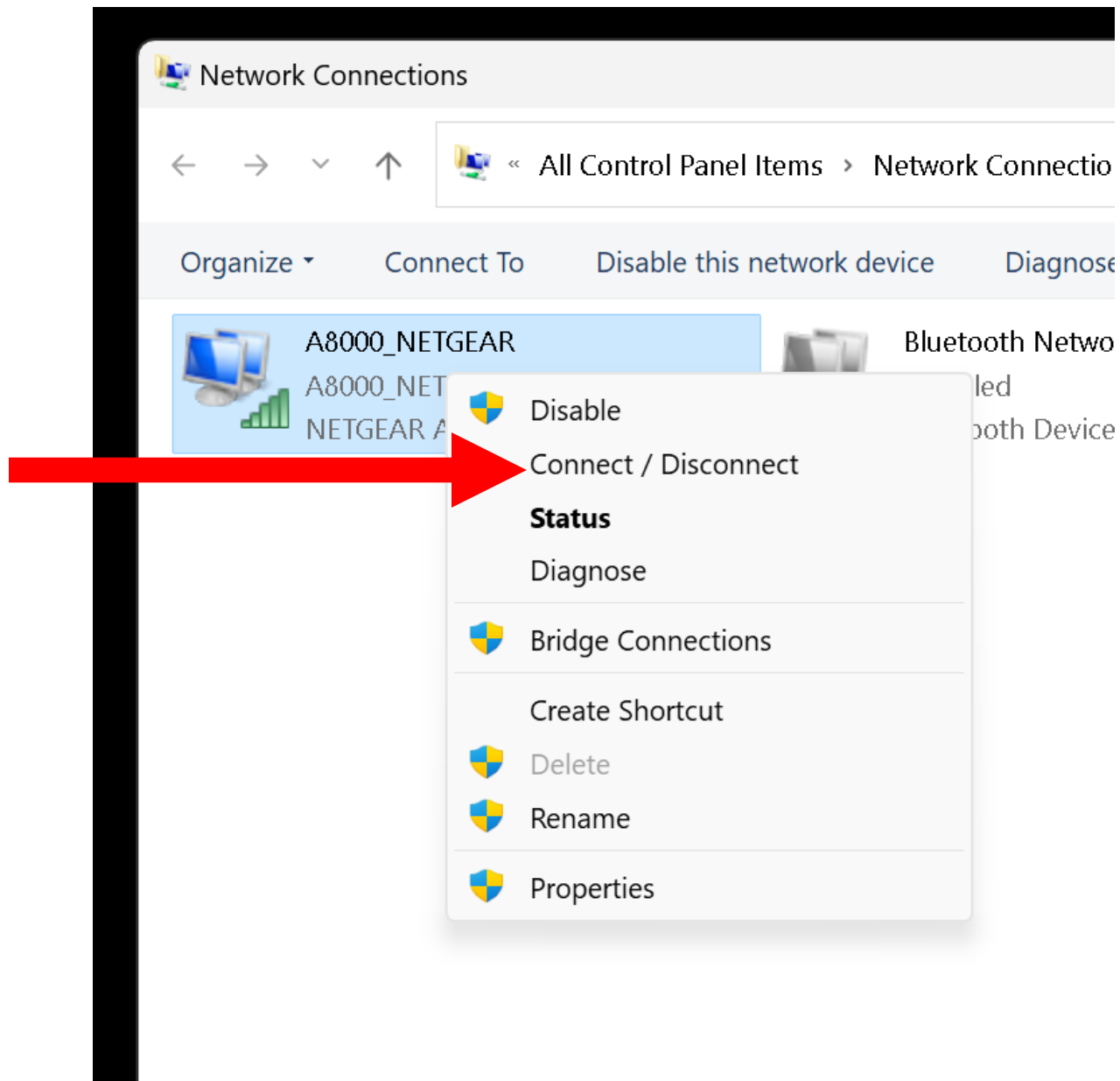
BIG STEP 200 (Connect to the Wi-Fi Hotspot from the Client Device) (continued)


- **SMALL STEP 209:**
Use the enabled Wi-Fi adapter to connect to the "Wireless Access Point" that is emanating from the iPhone cell phone as follows:
Use the right mouse button to click on the enabled Wi-Fi adapter:



BIG STEP 200 (Connect to the Wi-Fi Hotspot from the Client Device) (continued)

- **SMALL STEP 210:**
Use the left mouse button to click on "Connect / disconnect":

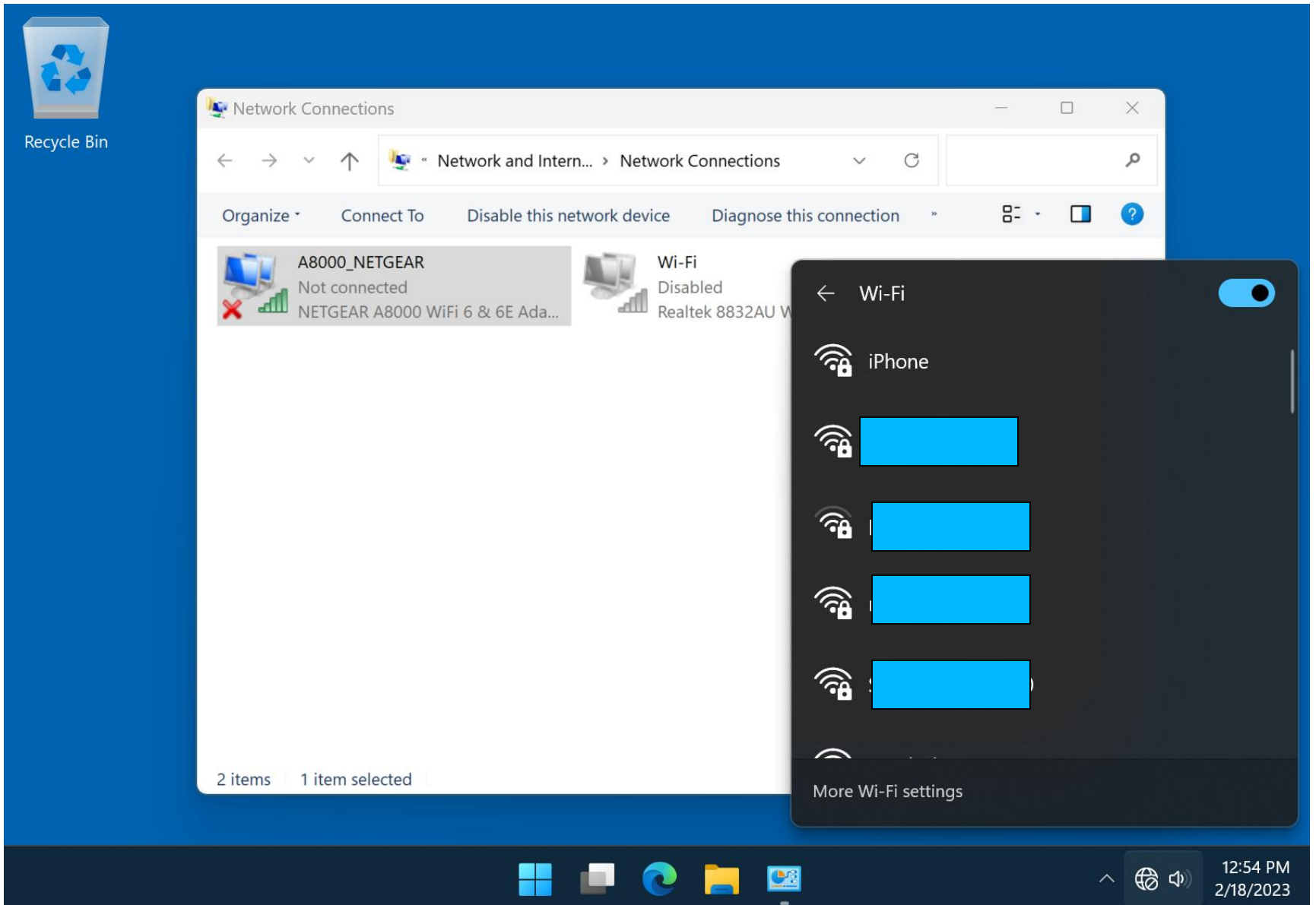


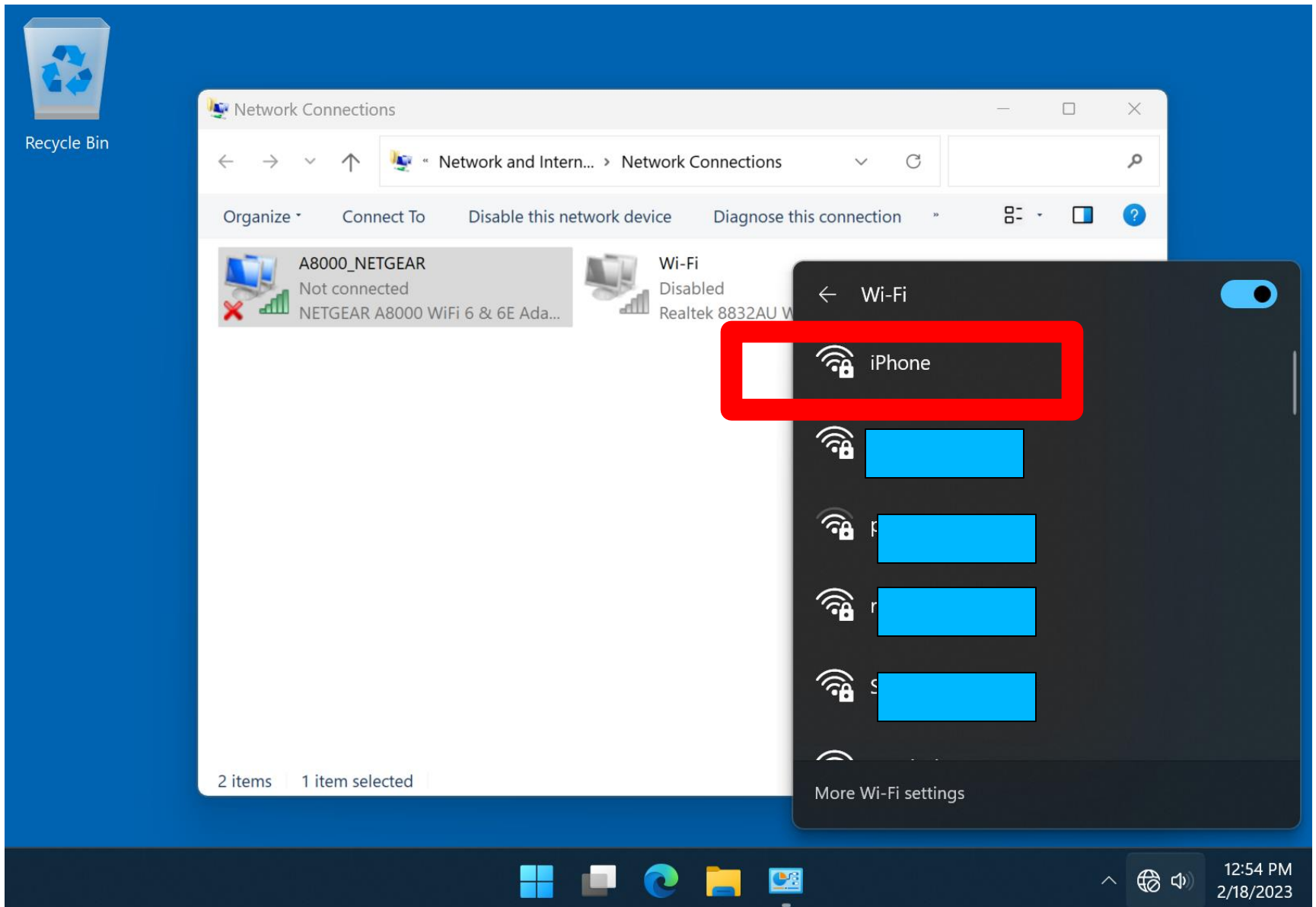


Connect / Disconnect

BIG STEP 200 (Connect to the Wi-Fi Hotspot from the Client Device) (continued)

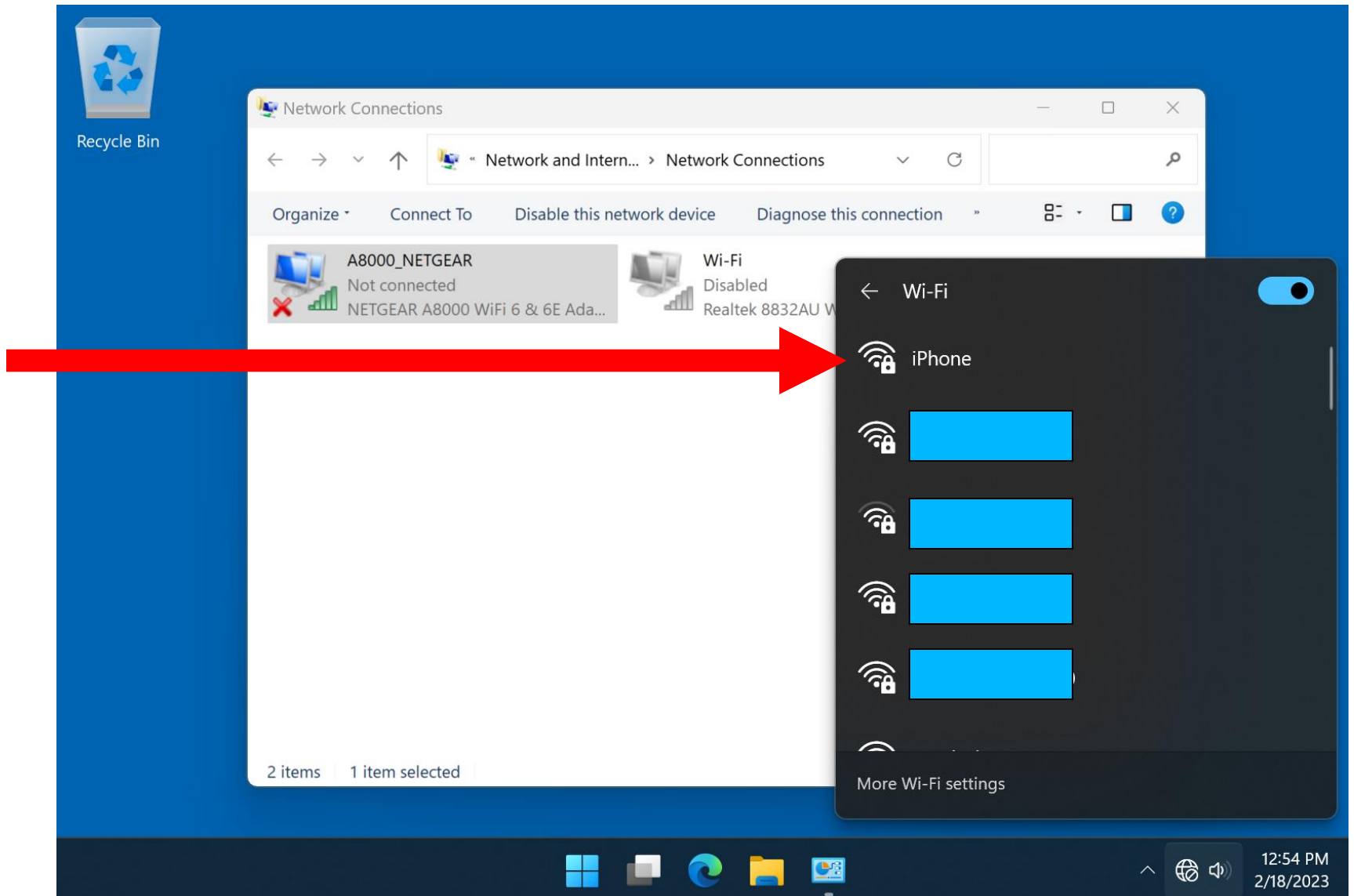
- **SMALL STEP 211:**
A list of one or more Wi-Fi "Wireless Access Points" will pop up in the lower-right area of the Windows "Desktop":

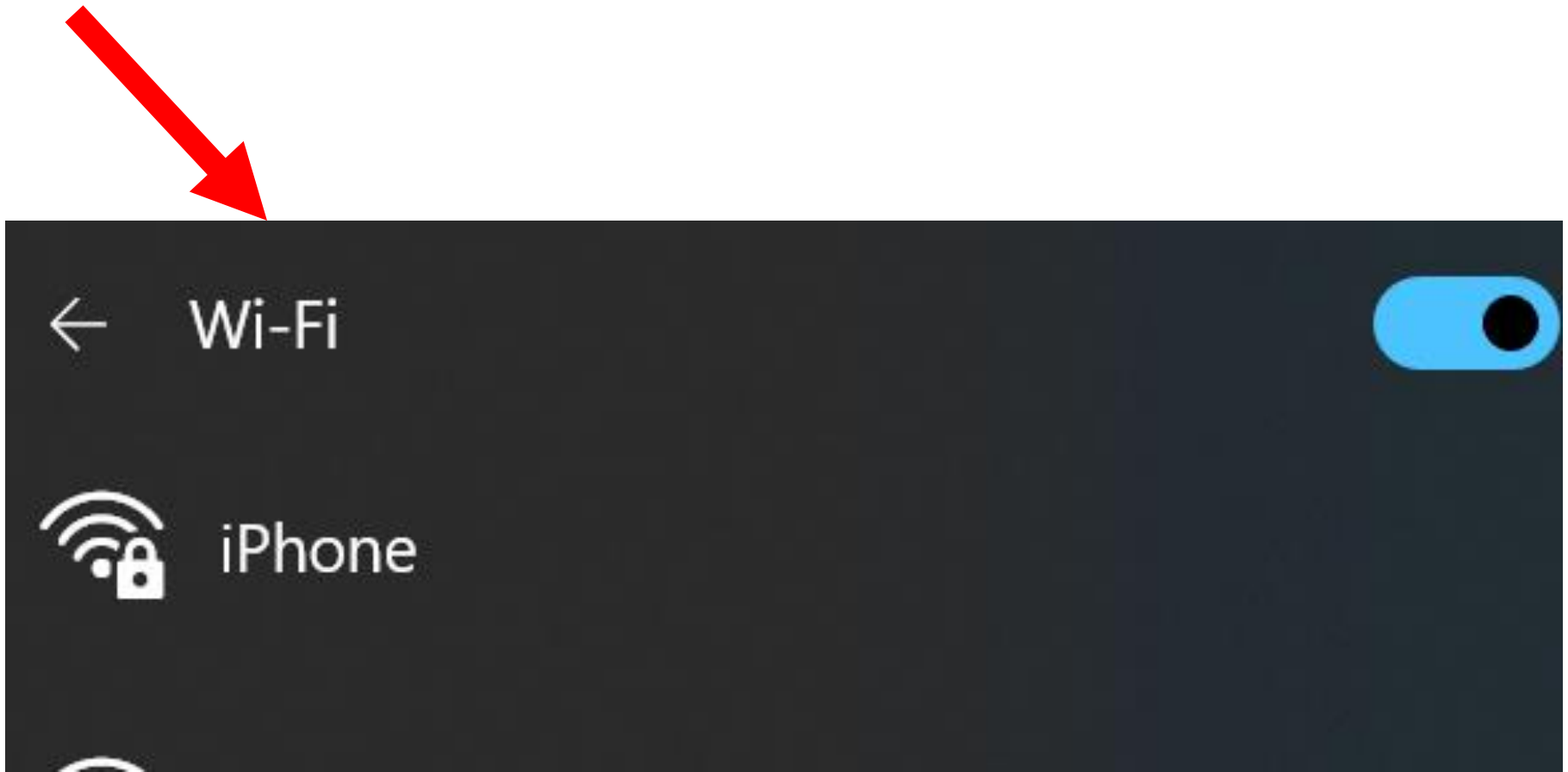




BIG STEP 200 (Connect to the Wi-Fi Hotspot from the Client Device) (continued)

- **SMALL STEP 212:**
Use the left mouse button to click on the "Wireless Access Point" called "iPhone" that corresponds to the one that is emanating from your iPhone:





BIG STEP 200 (Connect to the Wi-Fi Hotspot from the Client Device) (continued)

- **SMALL STEP 213:**
Use the left mouse button to click on the "Connect" button:




Recycle Bin


Network Connections

← → ▾ ↑ " Network and Intern... > Network Connections ▾ ↻ 🔍

Organize ▾ Connect To Disable this network device Diagnose this connection » ⌵ 🇺🇸 ?



A8000_NETGEAR
Not connected
NETGEAR A8000 WiFi 6 & 6E Ada...



Wi-Fi
Disabled
Realtek 8832AU W

2 items 1 item selected



← Wi-Fi 





iPhone
Secured

☐ Connect automatically









More Wi-Fi settings



12:57 PM
2/18/2023




Recycle Bin


Network Connections

Network and Intern... > Network Connections

Organize ▾ Connect To Disable this network device Diagnose this connection »



A8000_NETGEAR
Not connected
NETGEAR A8000 WiFi 6 & 6E Ada...



Wi-Fi
Disabled
Realtek 8832AU W

2 items 1 item selected

Wi-Fi

iPhone Secured

☐ Connect automatically

Connect

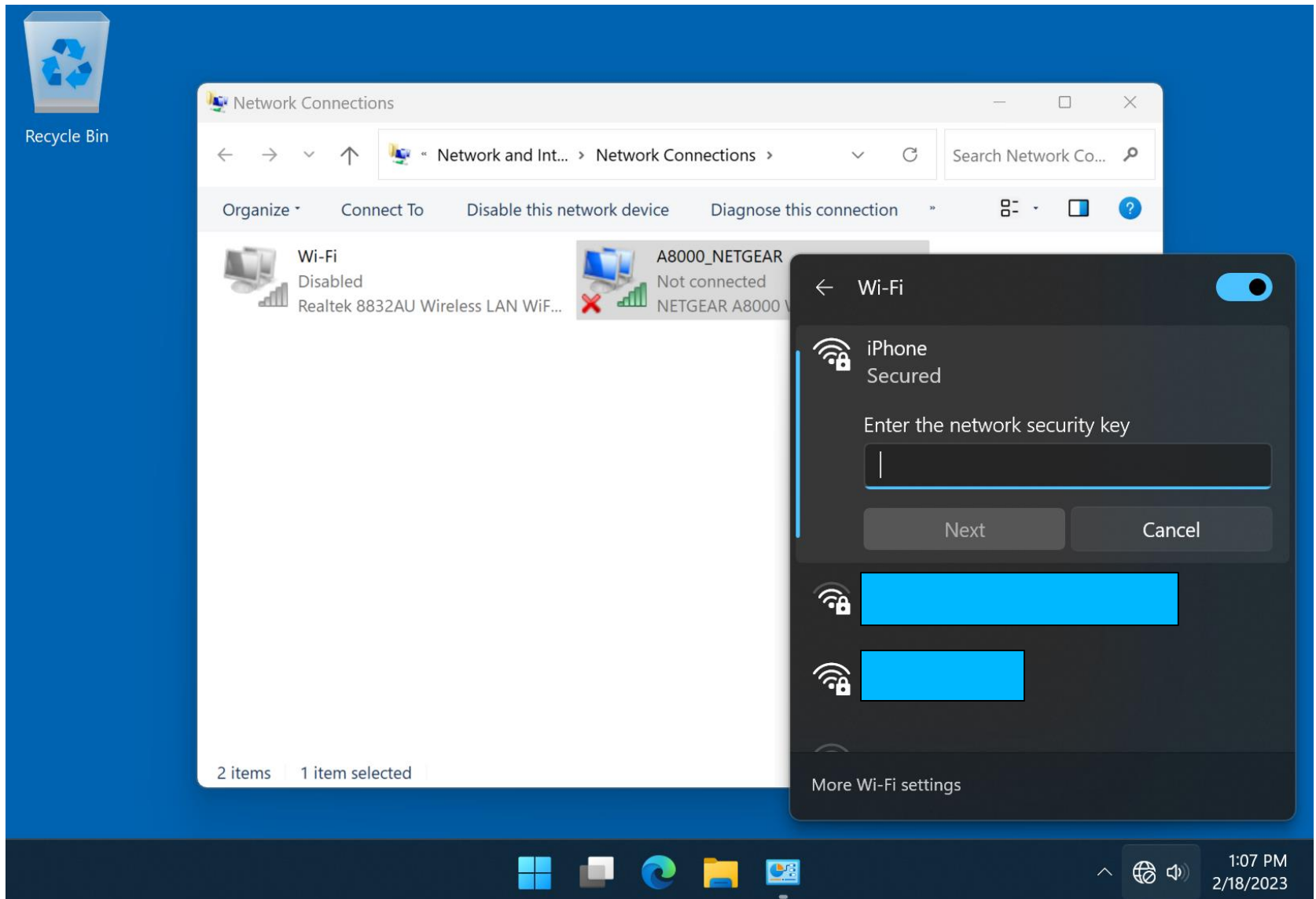
More Wi-Fi settings

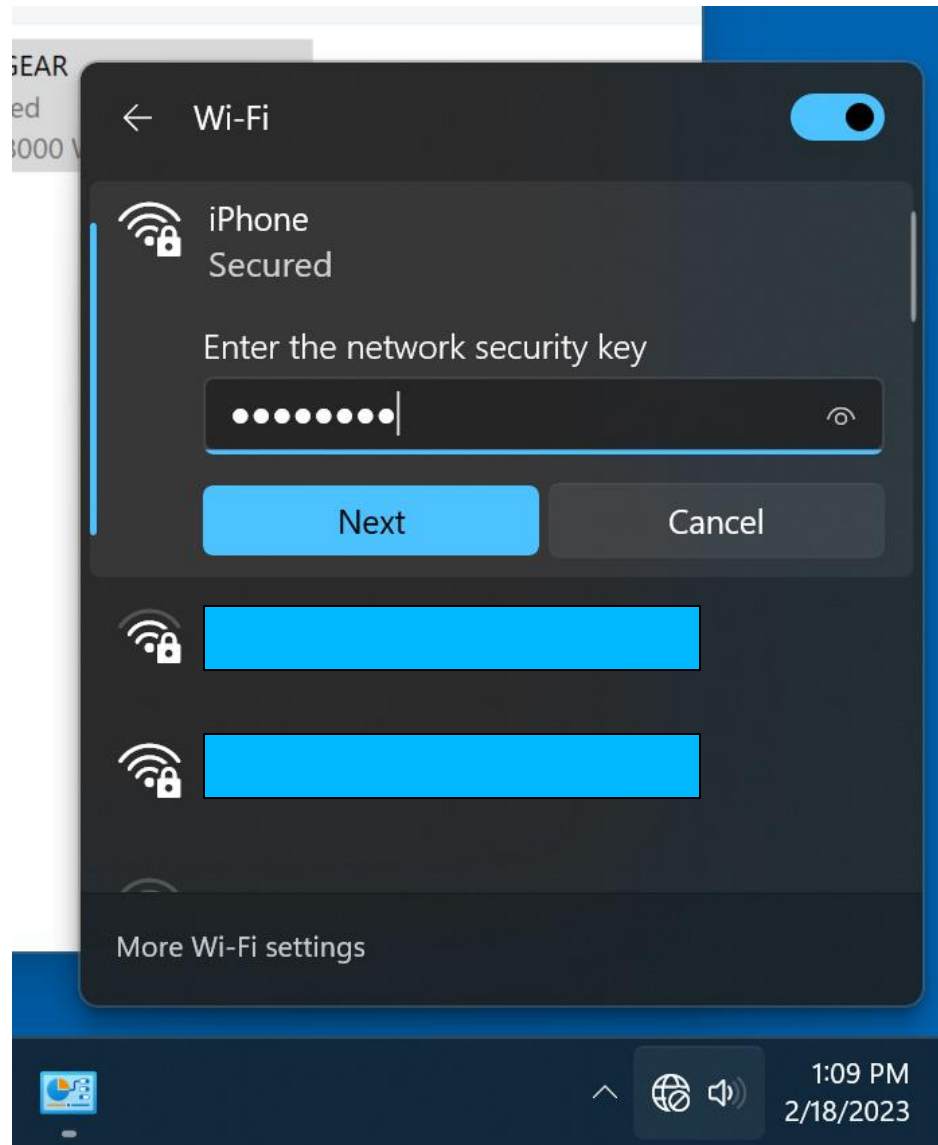


12:57 PM
2/18/2023

BIG STEP 200 (Connect to the Wi-Fi Hotspot from the Client Device) (continued)

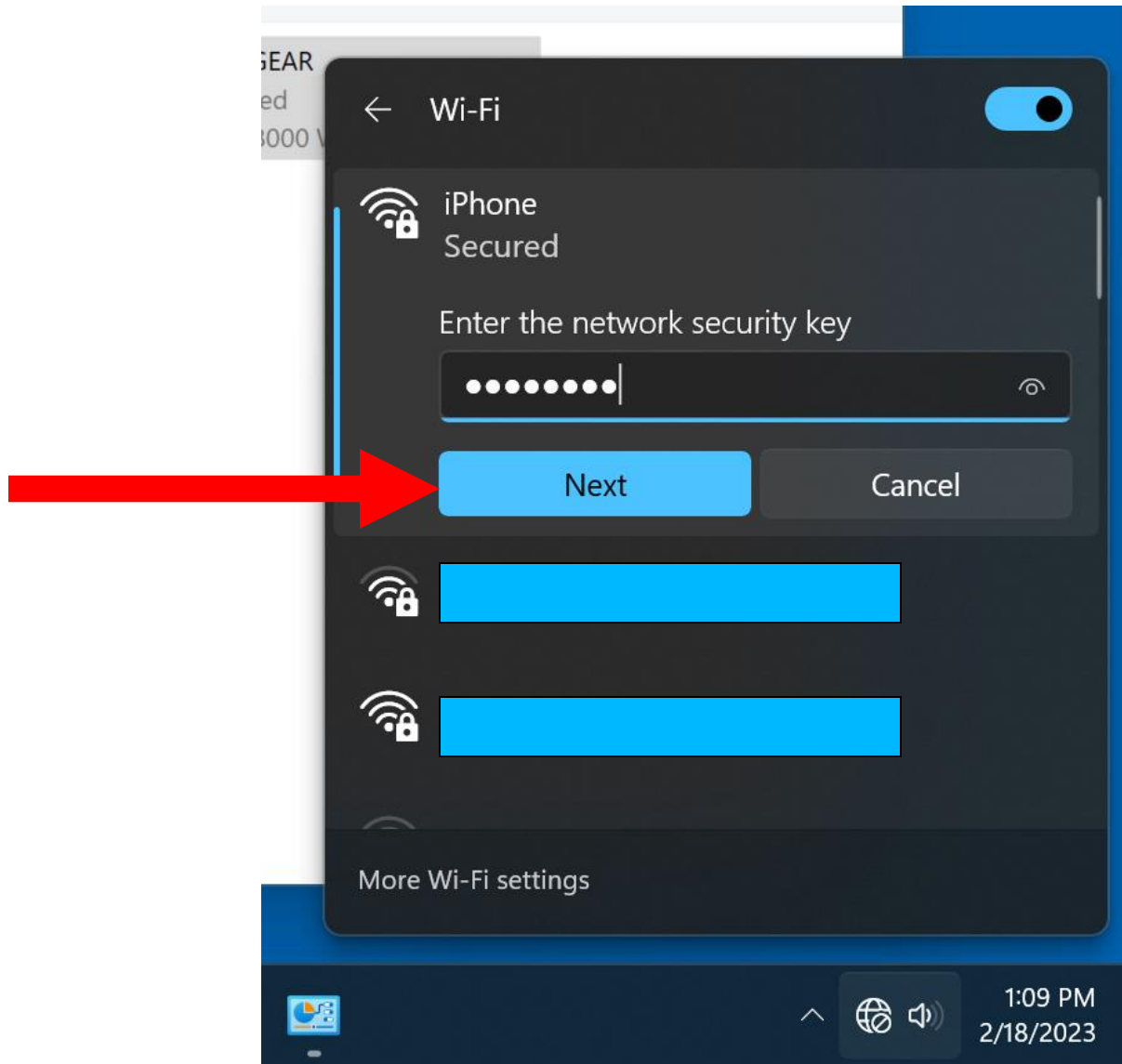
- **SMALL STEP 214:**
Type in the password that you wrote down in "SMALL STEP 108":

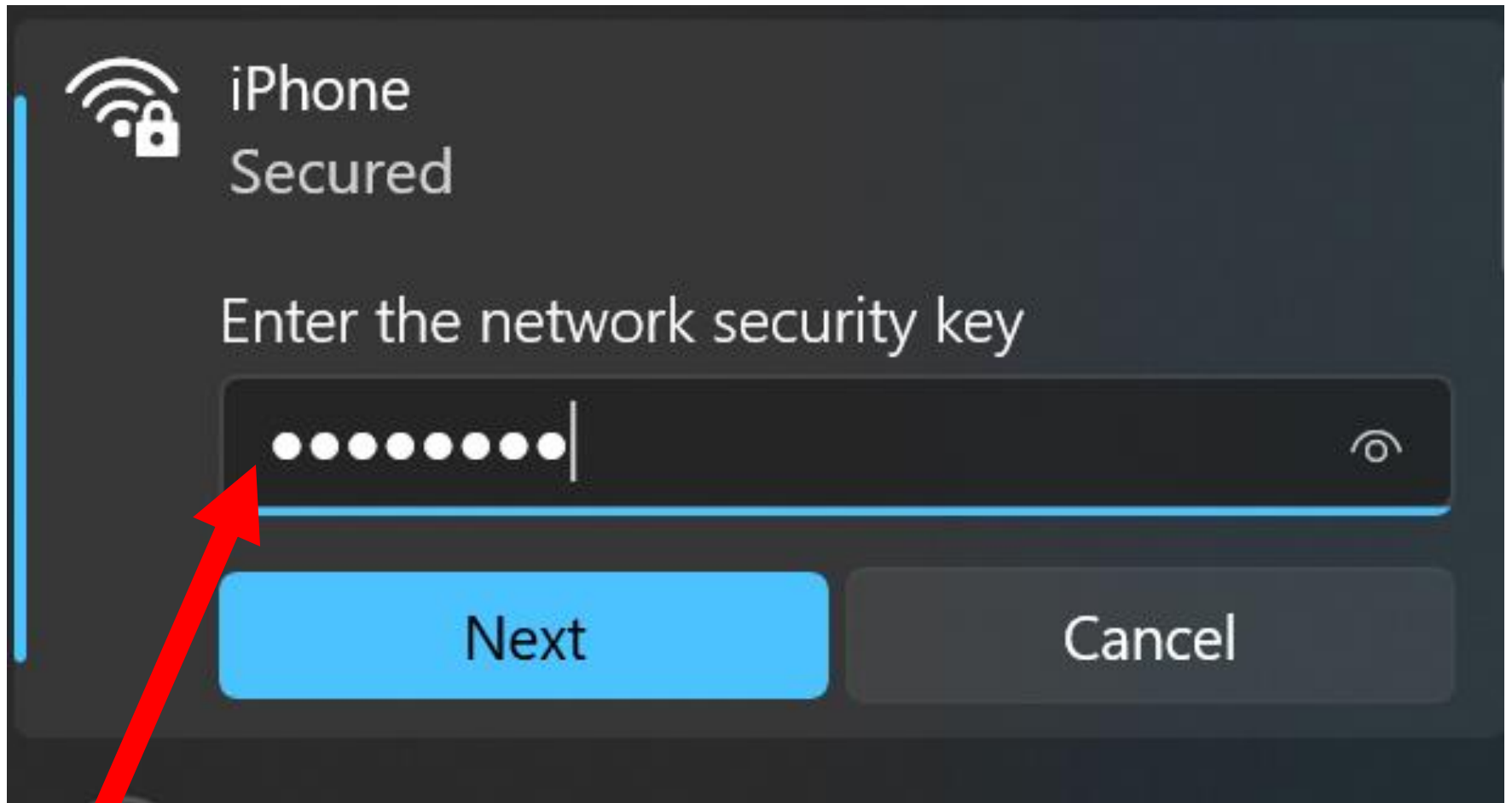




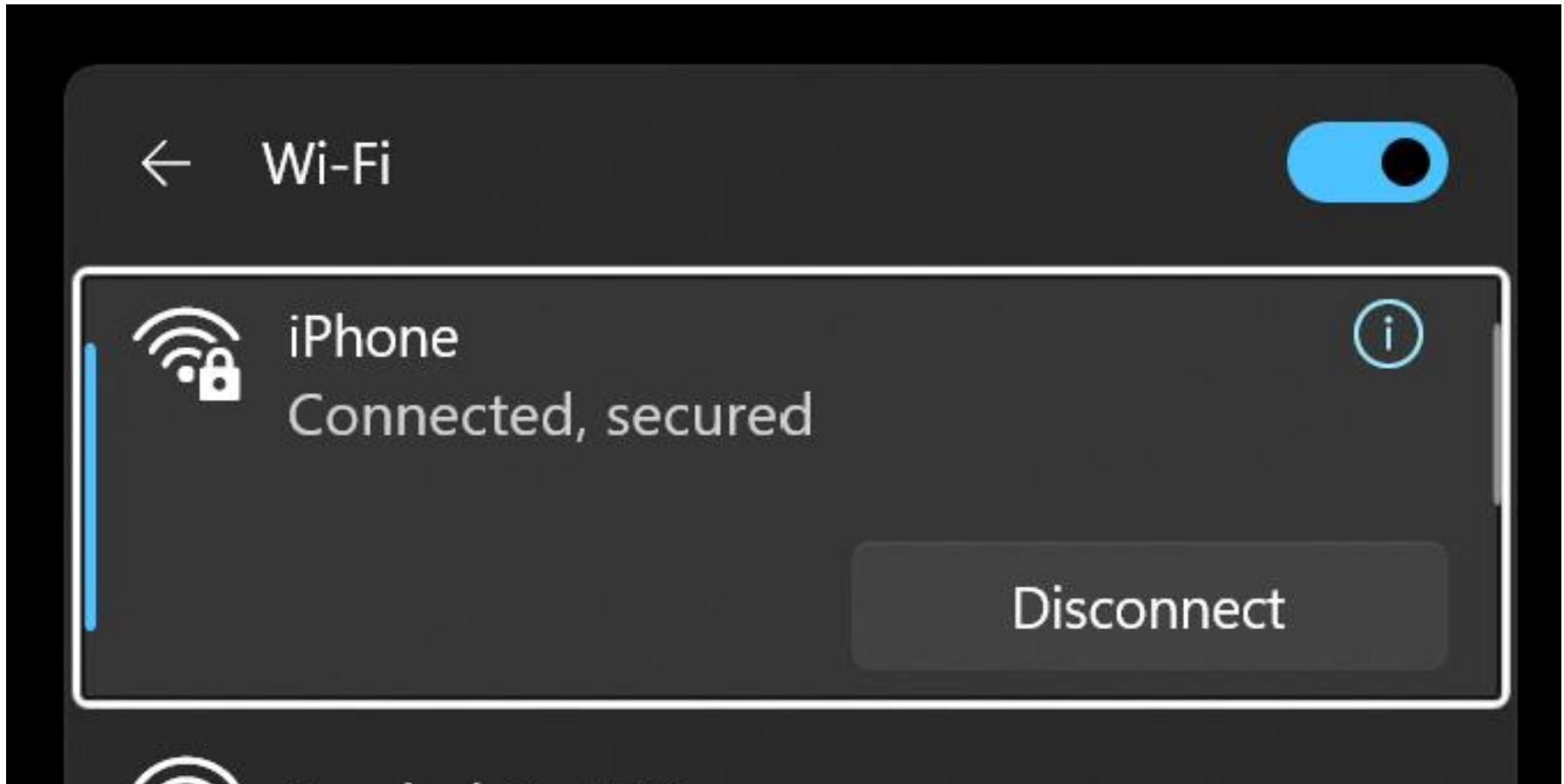
BIG STEP 200 (Connect to the Wi-Fi Hotspot from the Client Device) (continued)

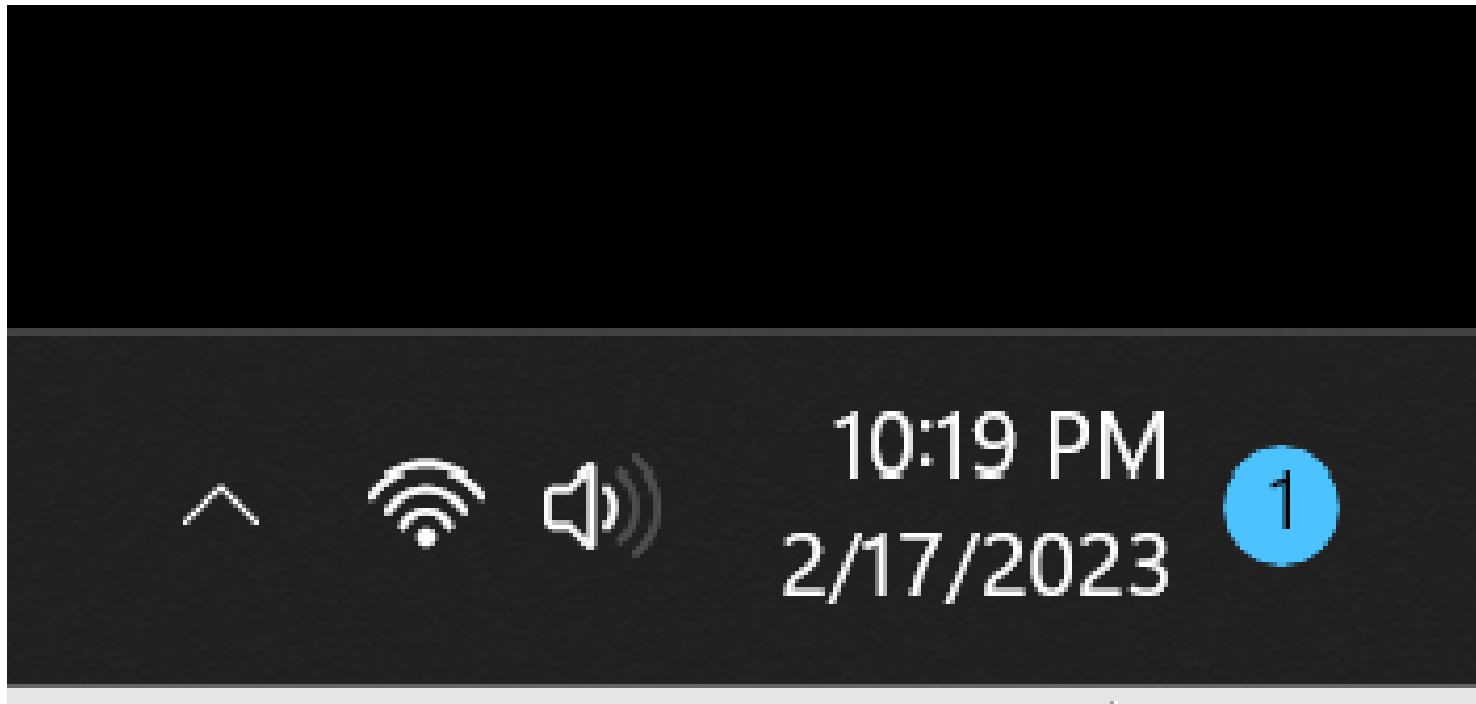
- **SMALL STEP 215:**
Use the left mouse button to click on the "Next" button:

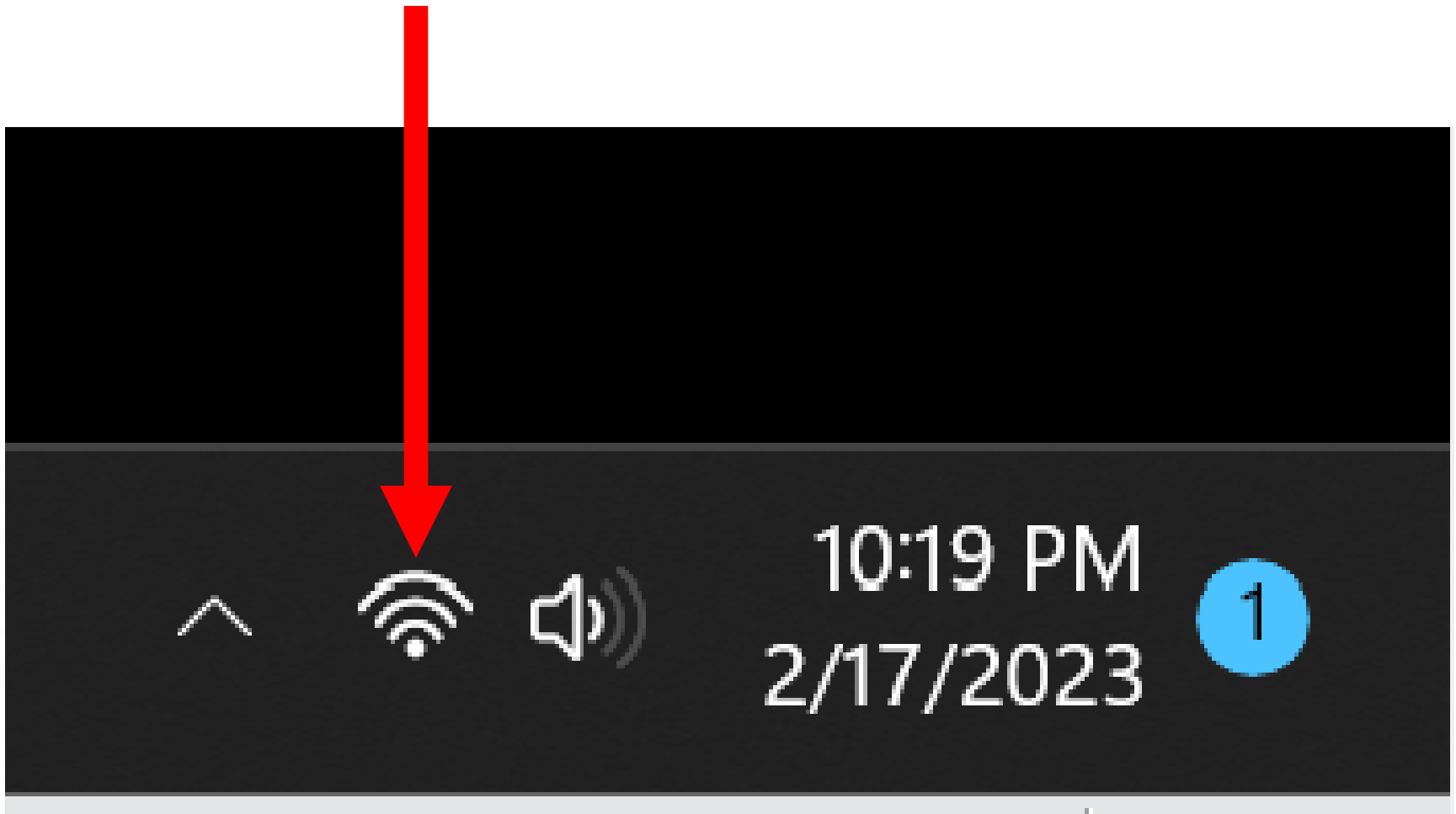












BIG STEP 200 (Connect to the Wi-Fi Hotspot from the Client Device) (continued)

- **SMALL STEP 216:**
Click on unused space in the Windows "Desktop" to close the list of "Wireless Access Points":

BIG STEP 200 (Connect to the Wi-Fi Hotspot from the Client Device) (continued)

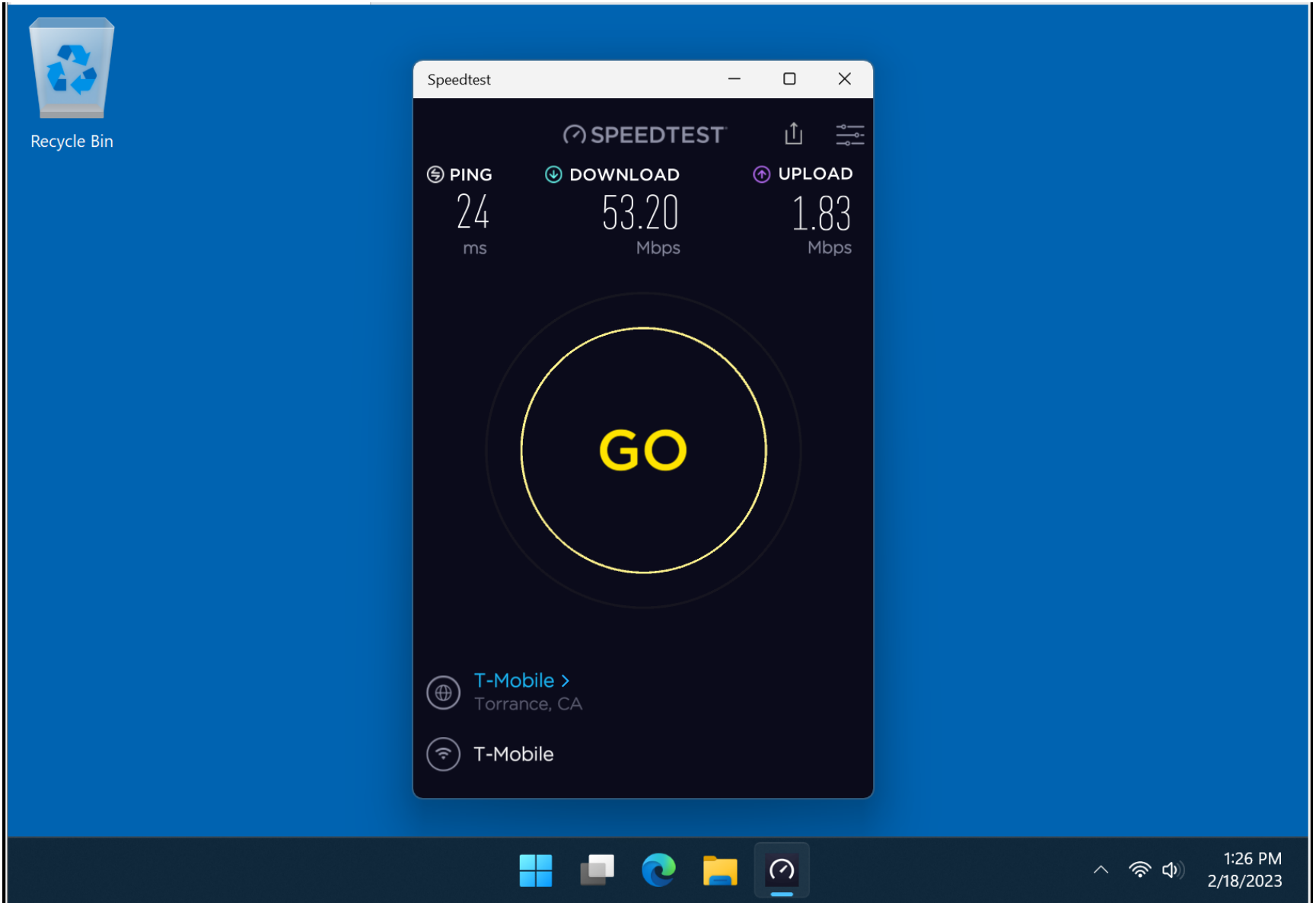
- **SMALL STEP 217:**
Close the "Network Connections" window by clicking on the "x" button in the upper-right corner of the "Network Connections" window.

BIG STEP 200 (Connect to the Wi-Fi Hotspot from the Client Device) (continued)

- **SMALL STEP 216:**
Click on unused space in the Windows "Desktop" to close the list of "Wireless Access Points":

BIG STEP 200 (Connect to the Wi-Fi Hotspot from the Client Device) (continued)

- **SMALL STEP 217:**
Close the "Network Connections" window by clicking on the "x" button in the upper-right corner of the "Network Connections" window.



IF iPHONE's TETHERING TURNS OFF BY ITSELF..

- <https://gadgetstouse.com/blog/2021/11/19/working-7-ways-to-fix-iphone-hotspot-turns-off-automatically/>

ADDITIONAL ADVICE

- <https://support.apple.com/guide/iphone/share-your-internet-connection-iph45447ca6/ios>
- <https://support.apple.com/en-us/HT203302>